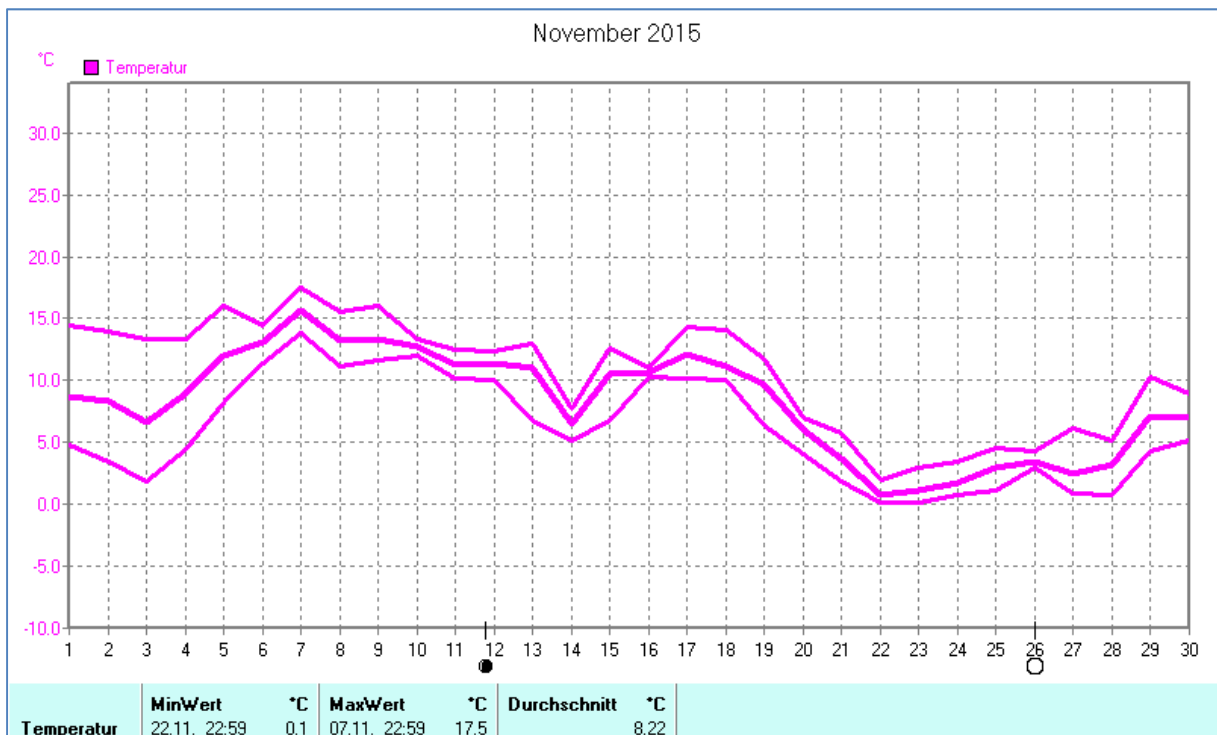
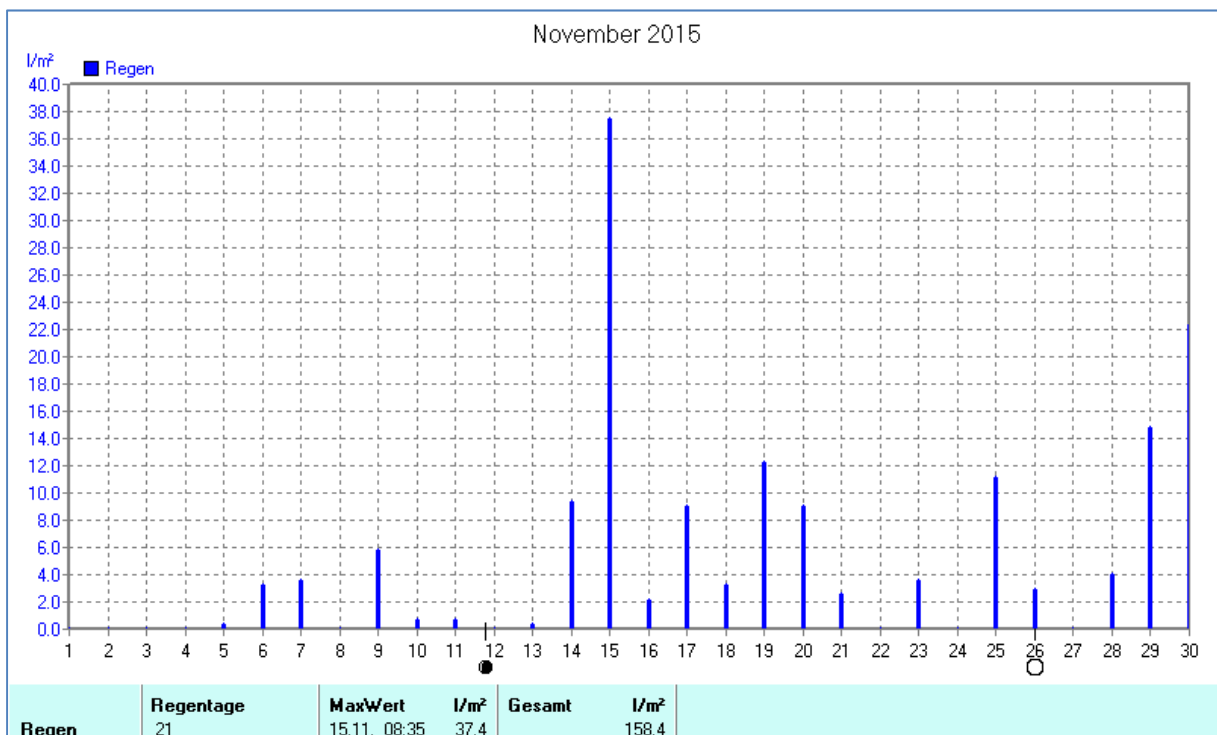
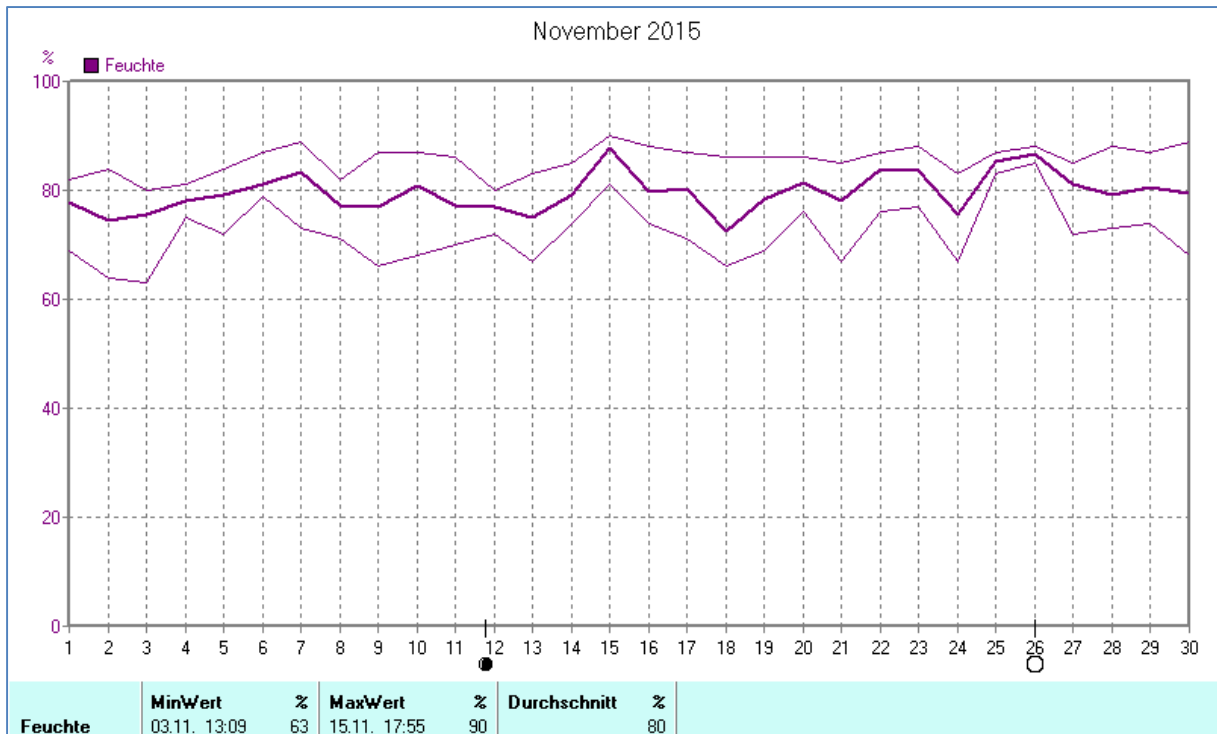
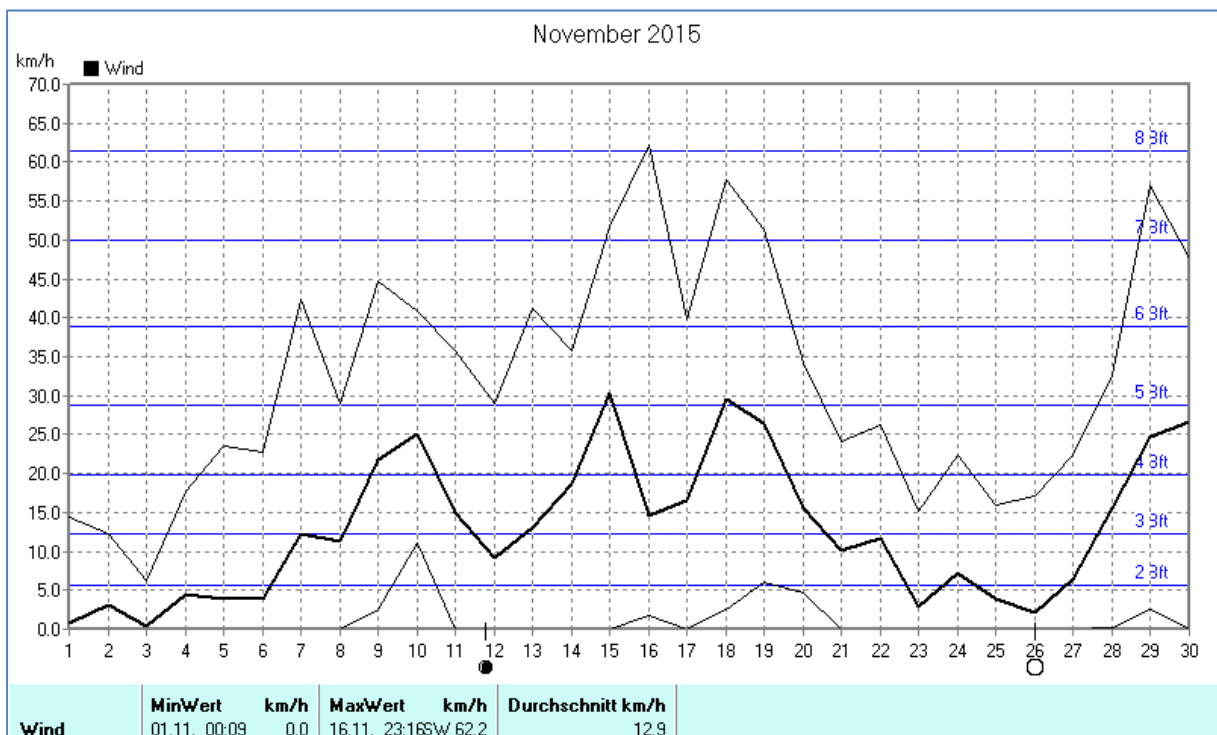
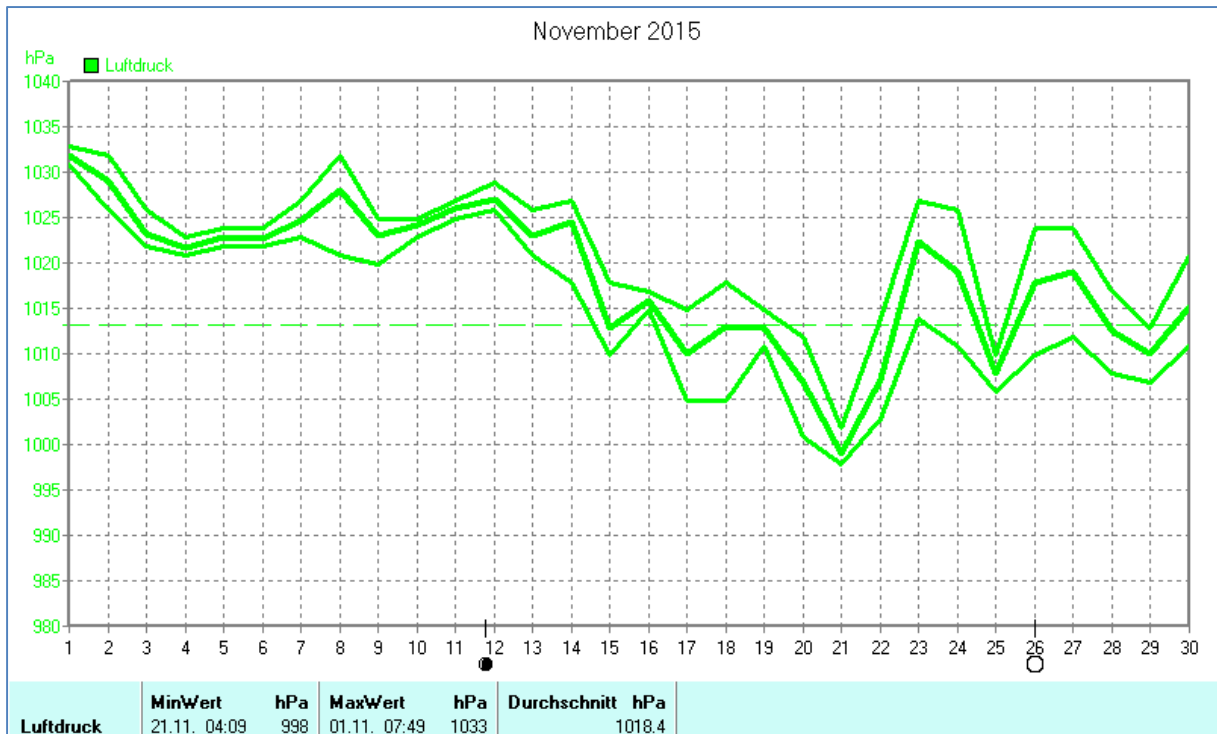


## Wettertabelle und Grafiken November 2015 Station Dahl

<b>Wetterdaten November 2015 Station Dahl</b>							
Meßgröße	Minimum	Zeit	Datum	Maximum	Zeit	Datum	Durchschnitt
Temperatur (2m)	0,1 °C	22:59	22.11.2015	17,5 °C	22:59	07.11.2015	8,2 °C
Bodentemp. (5cm ü.B.)	-1,4 °C	20:59	23.11.2015	17,5 °C	22:50	07.11.2015	8,0 °C
Luftfeuchte	63 %	13:09	03.11.2015	90 %	17:55	15.11.2015	80 %
Luftdruck	998 hPa	04:09	21.11.2015	1033 hPa	07:49	01.11.2015	1018 hPa
Wind km/h				62,2 km/h	23:16	16.11.2015	12,9 km/h
Wind °				W-SW	23:16	16.11.2015	W-SW
Regen l/m <sup>2</sup>				37,4 l/m <sup>2</sup>	08:35	15.11.2015	#158,400 l/m <sup>2</sup>
Sonne h				5:19 h	14:19	01.11.2015	#38:00 h

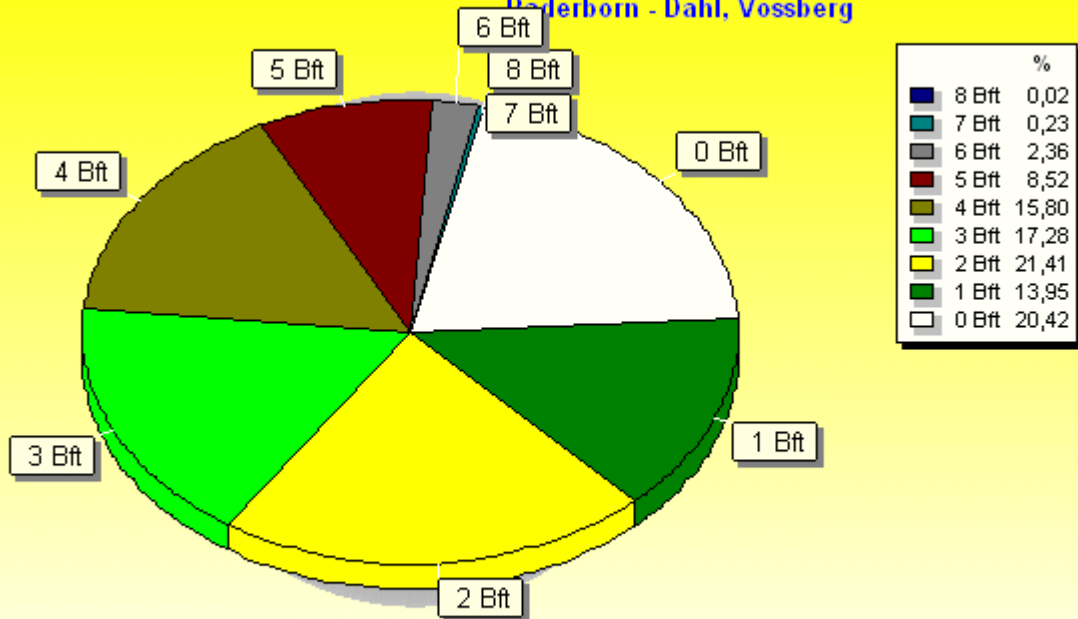






### Verteilung Windstärke November 2015

Paderborn - Dahl, Vossberg

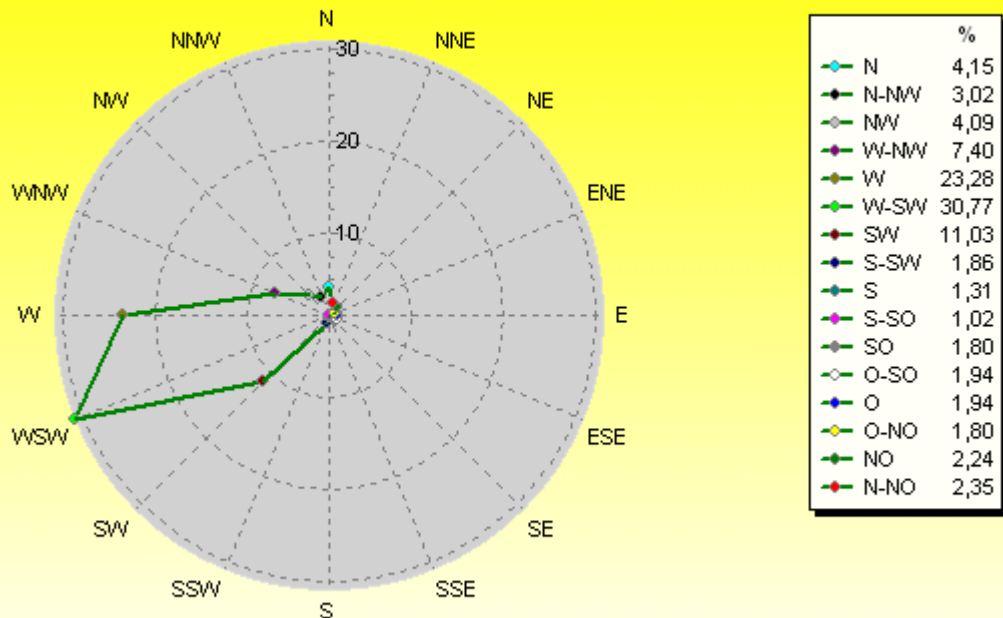


4329 Werte - Ø 12,9km/h - Max. 62,2km/h

© WzWin32

### Verteilung Windrichtung November 2015

Paderborn - Dahl, Vossberg



3445 / 884 Werte -> 20.4% Windstille - Ø 12,9km/h - Max. 62,2km/h

© WzWin32

