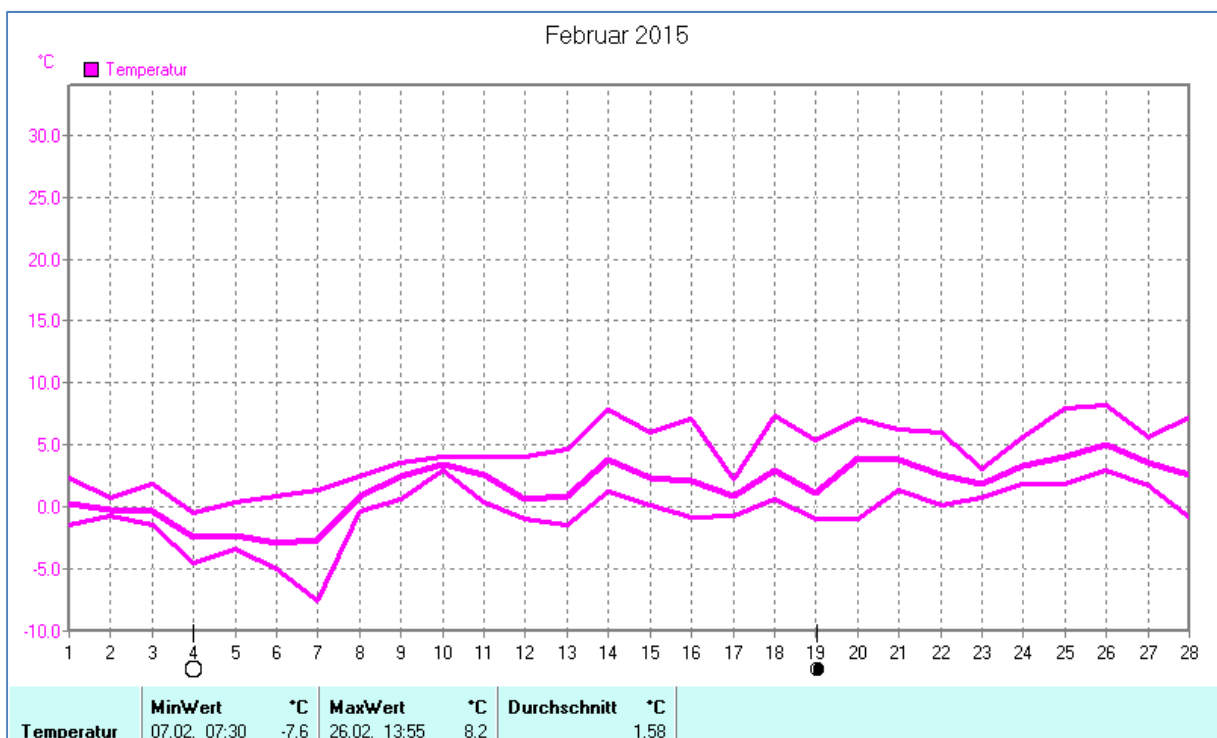
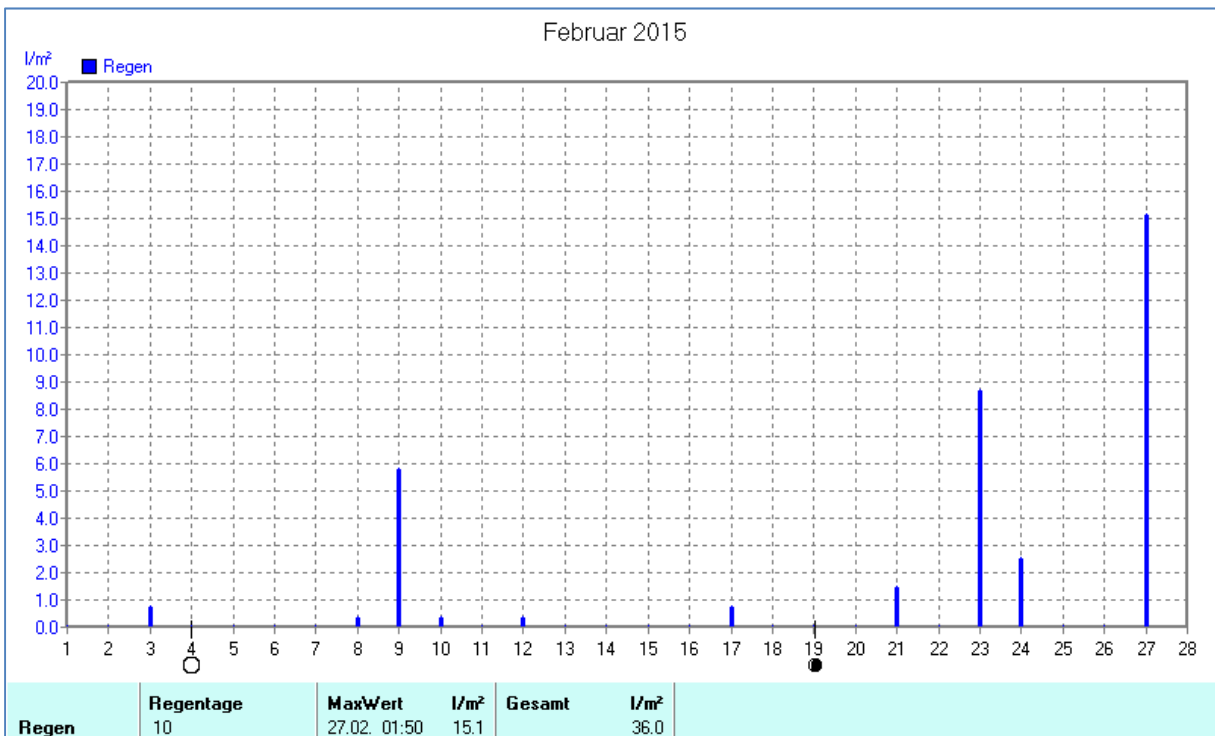
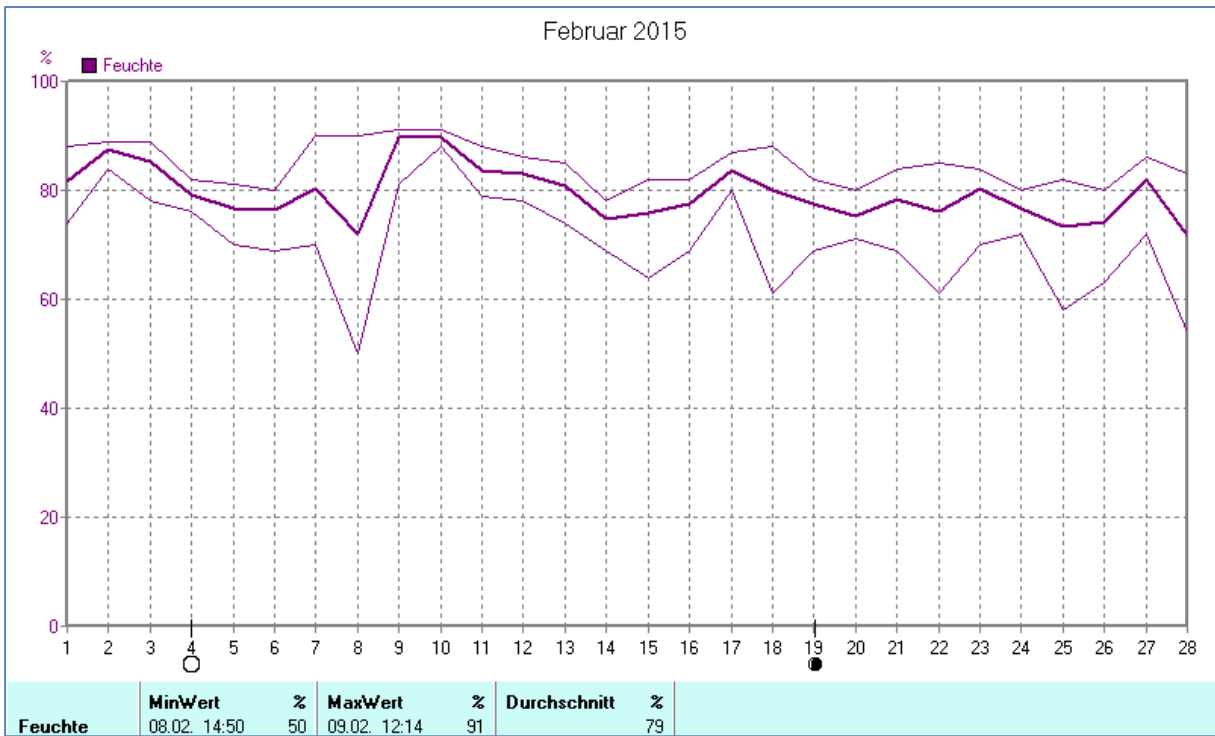
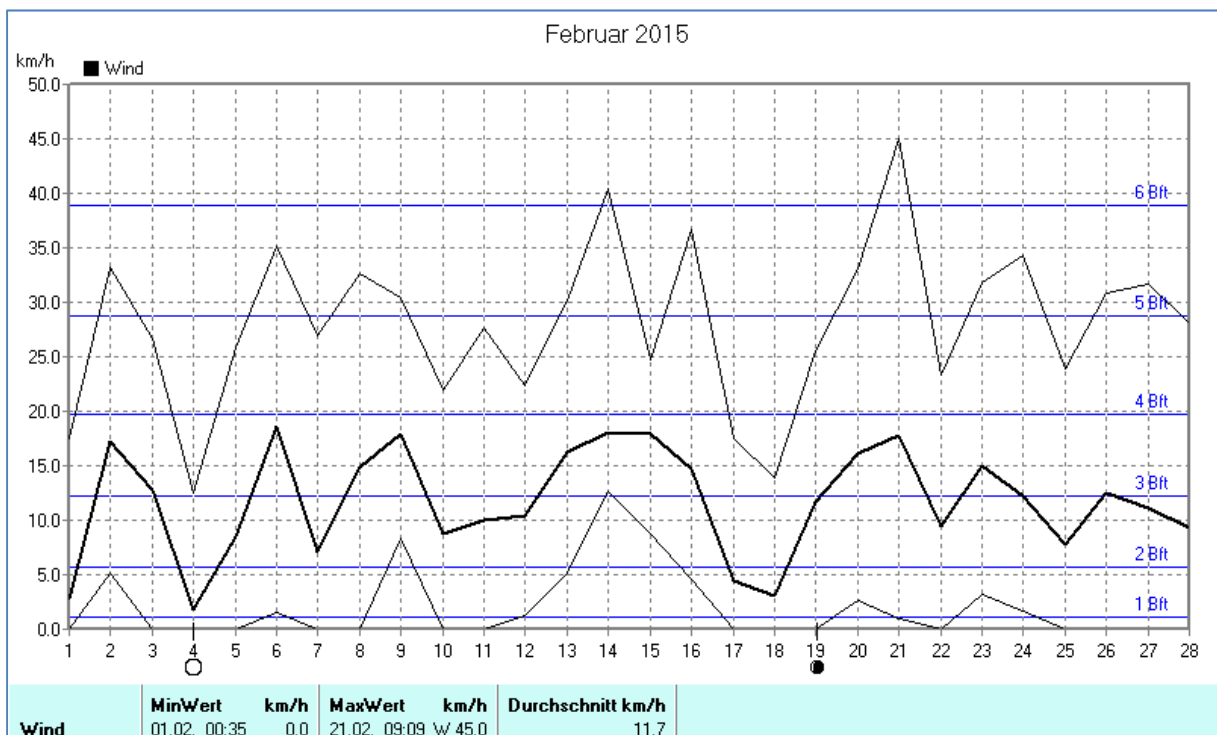
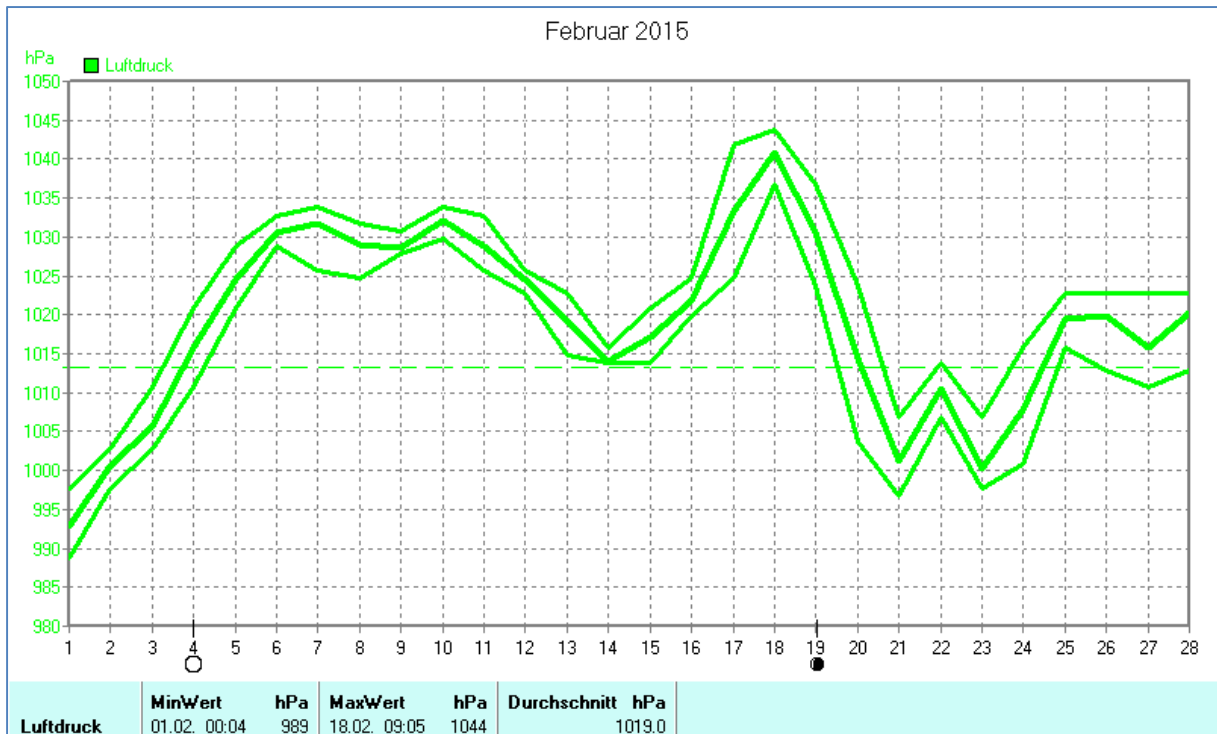


## Wettertabelle und Grafiken Februar 2015 Station Dahl

Wetterdaten Februar 2015 Station Dahl							
Meßgröße	Minimum	Zeit	Datum	Maximum	Zeit	Datum	Durchschnitt
Temperatur	-7,6 °C	07:30	07.02.2015	8,2 °C	13:55	26.02.2015	1,6 °C
Bodentemp.	-9,0 °C	07:19	07.02.2015	12,0 °C	13:50	26.02.2015	1,4 °C
Luftfeuchte	50 %	14:50	08.02.2015	91 %	12:14	09.02.2015	79 %
Luftdruck	989 hPa	00:04	01.02.2015	1044 hPa	09:05	18.02.2015	1019 hPa
Wind km/h				45,0 km/h	09:09	21.02.2015	11,7 km/h
Wind °				W	09:09	21.02.2015	S-SO
Regen l/m <sup>2</sup>				15,1 l/m <sup>2</sup>	01:50	27.02.2015	#36,000 l/m <sup>2</sup>
Sonne h				6:31 h	17:50	28.02.2015	#68:25 h

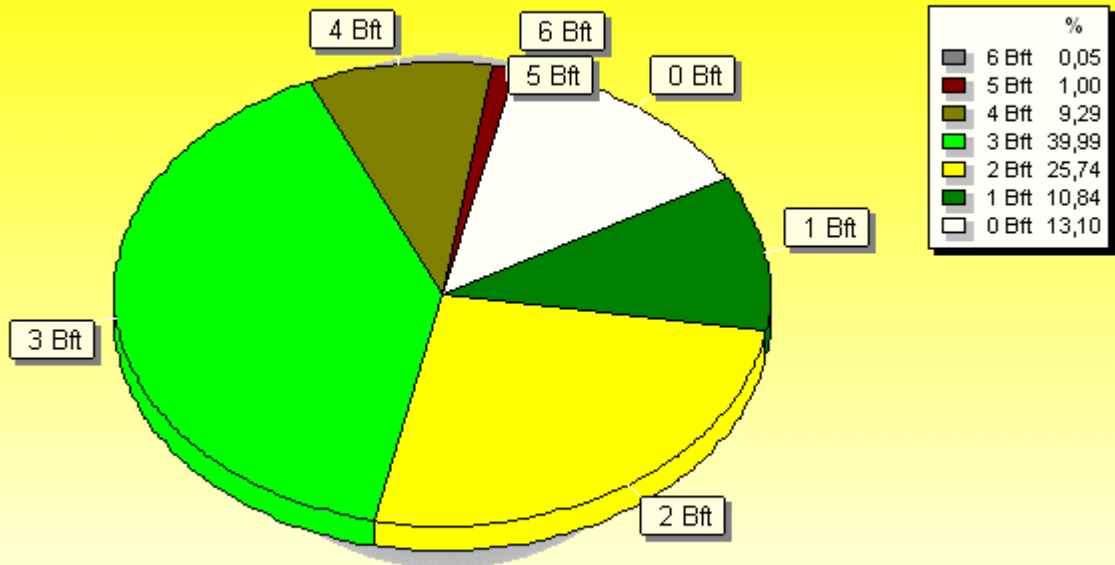






### Verteilung Windstärke Februar 2015

Paderborn - Dahl, Vossberg

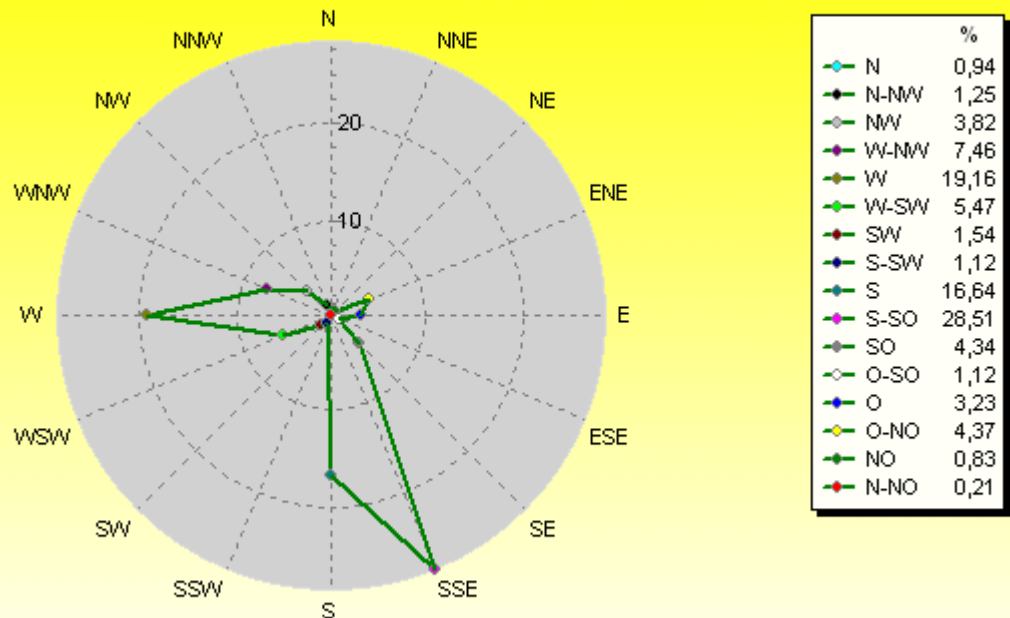


8222 Werte - Ø 11,7km/h - Max. 45,0km/h

© WzWin32

### Verteilung Windrichtung Februar 2015

Paderborn - Dahl, Vossberg



7145 / 1077 Werte -> 13.1% Windstille - Ø 11,7km/h - Max. 45,0km/h

© WzWin32

