

## Wettergrafiken und Tabelle November 2010 Station Schlangen BK

### Klimadaten Wetterstation Schlangen BK

**Standortkoordinaten:** geogr. 08°43' "O - 51°47' "N

172 m ü. NN

#### Monatswerte: Nov. 2010

**Temperaturmittel:** 5,4°C (Vj. 8,9 °C )

Lj.Mittel:(Lipp.1961-90): 5,2 °C

Abweichung 0,2 °C

Absoluts Max.: 15,8 °C

Absolutes Min -5,7 °C

Tage mit Schneedecke: 5

Eistage(Max<0,0°C): 3

Frosttage(MIN<0,0°C): 6

Sommertage(Max>=25°C):

Heiße Tage(Max>=30°C):

**Niederschlagssumme:** 169,0 mm ( Vj. 154,4 mm)

Max.Tag: 53,4 mm

Lj.Mittel(Lipp. 1961-90): 79,4 mm

**Luftdruck(Meereshöhe):hPa**

Absolutes Max.: 1023

Absolutes Min.: 979

Mittel: 1003

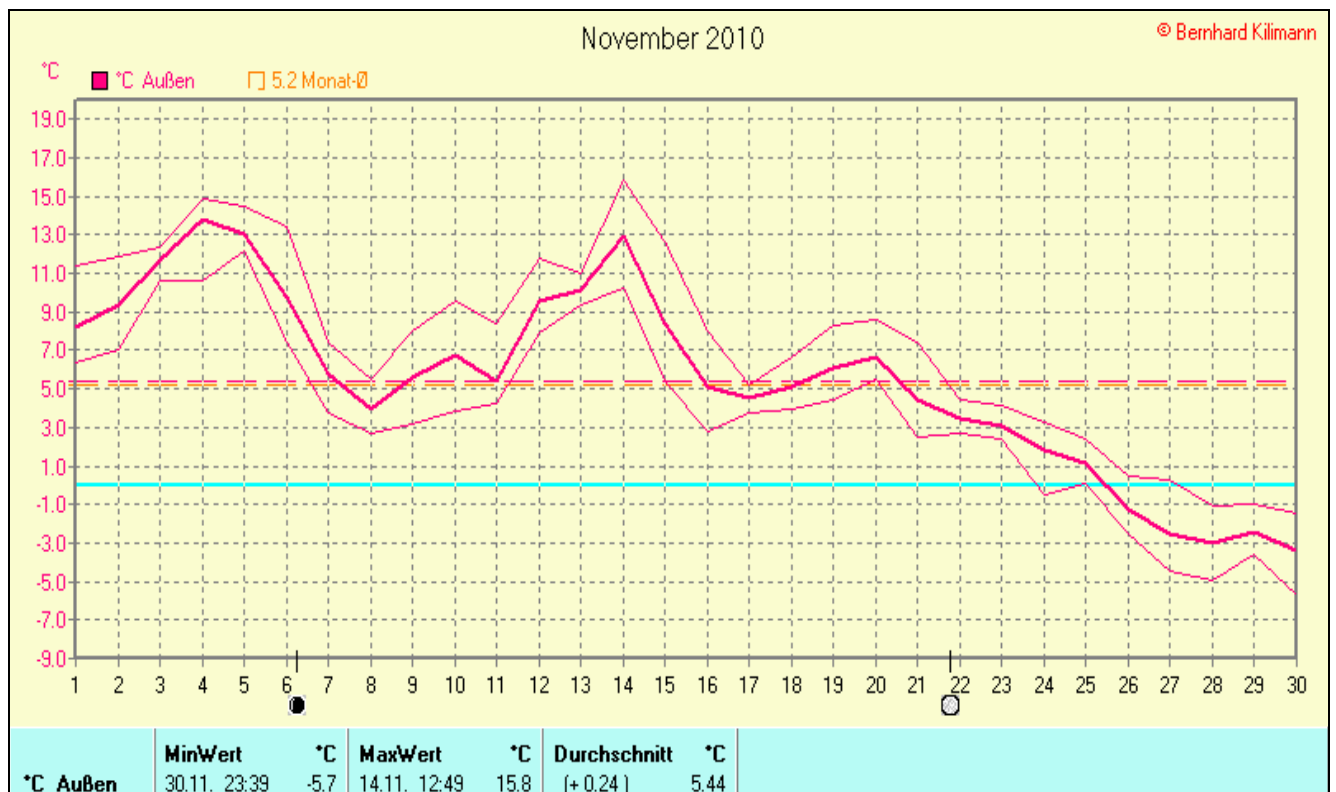
**Mittel relative Feuchte:** 83,0 %

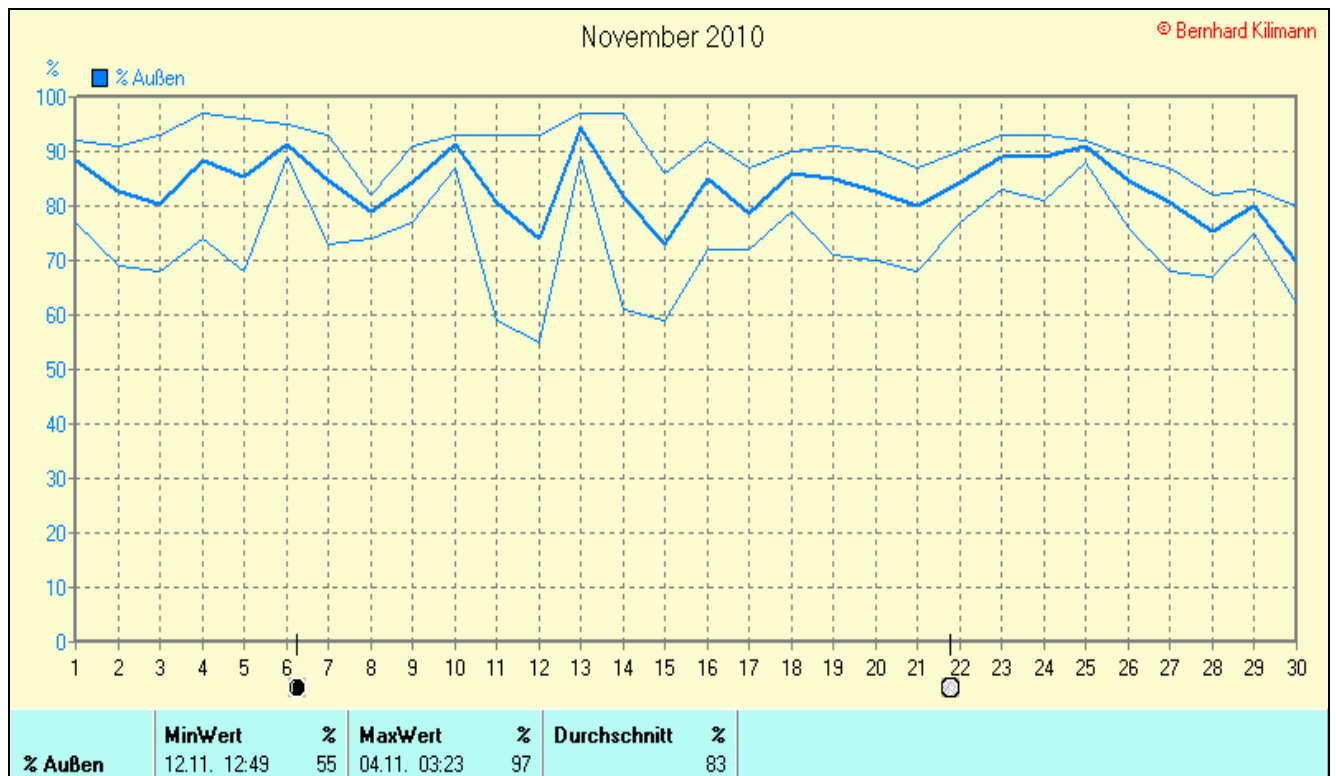
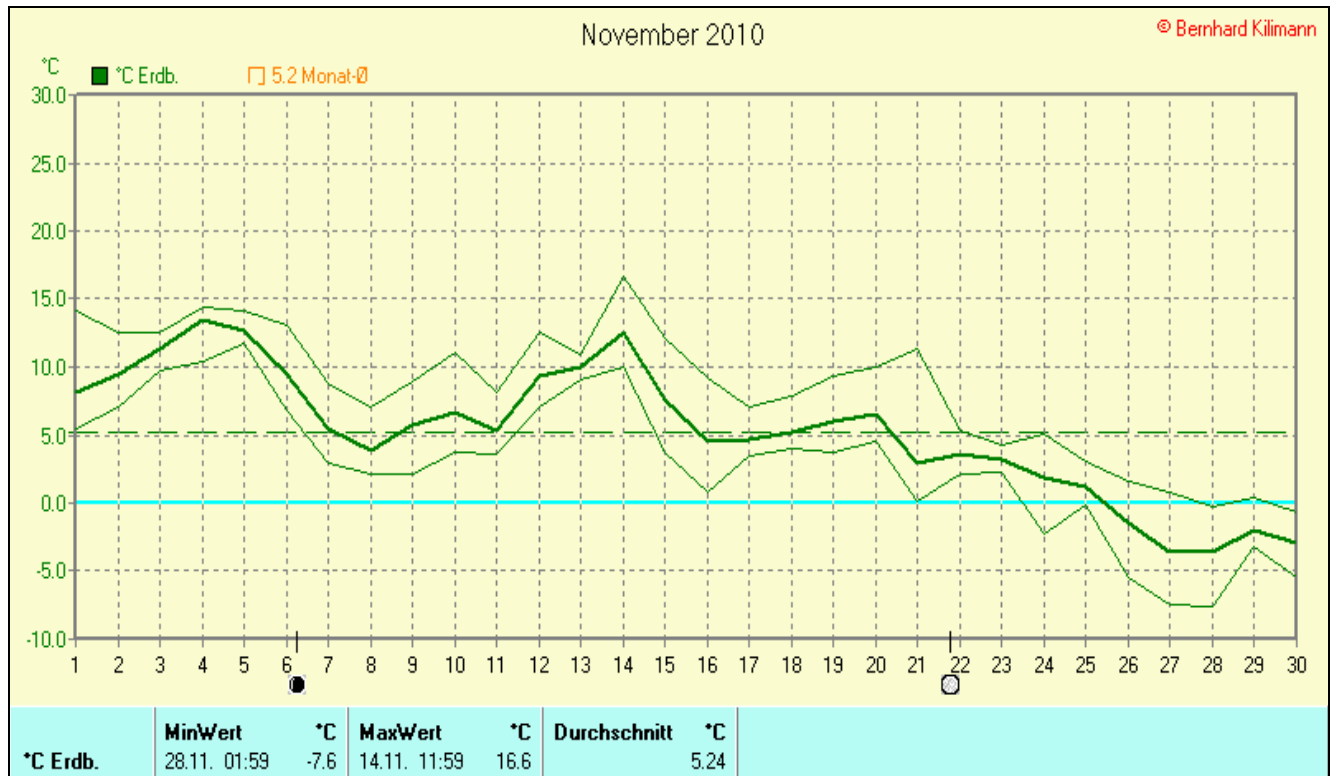
**Max. Windböe:** 51,1 km/h

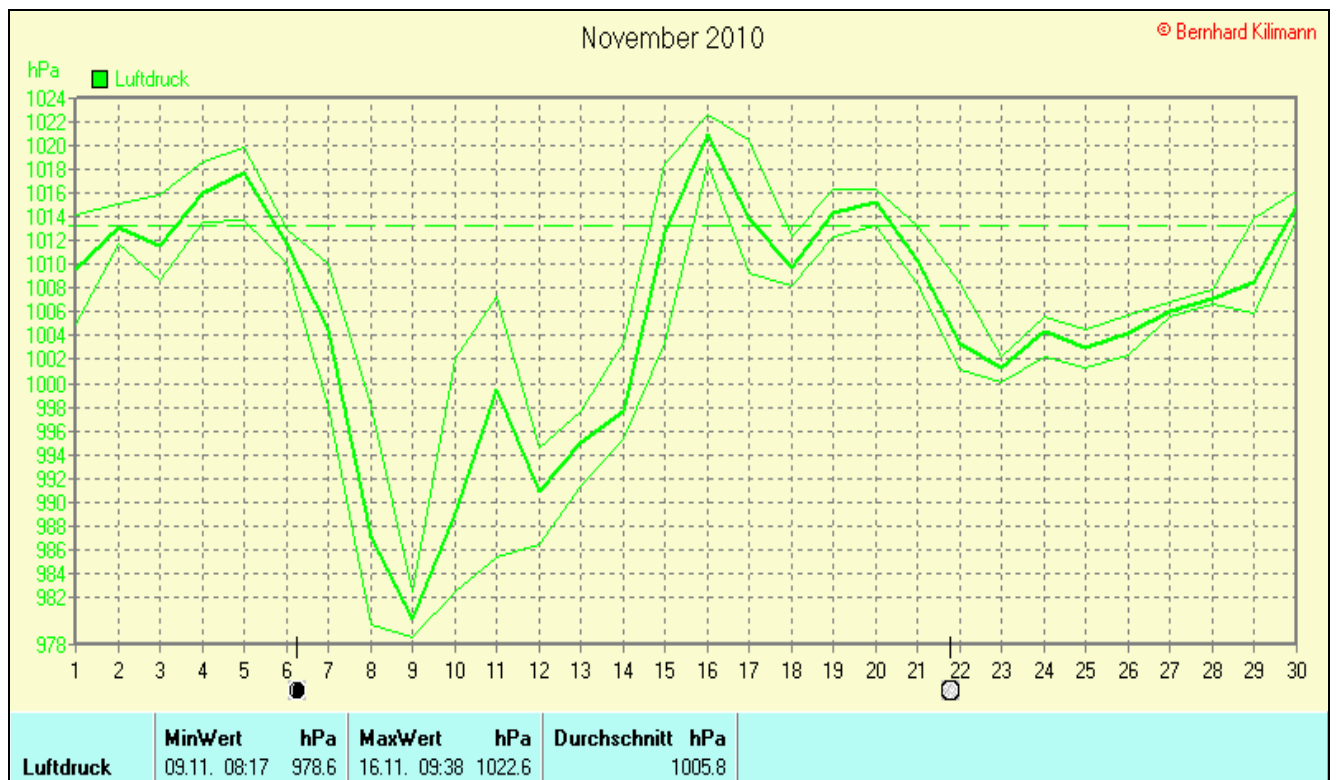
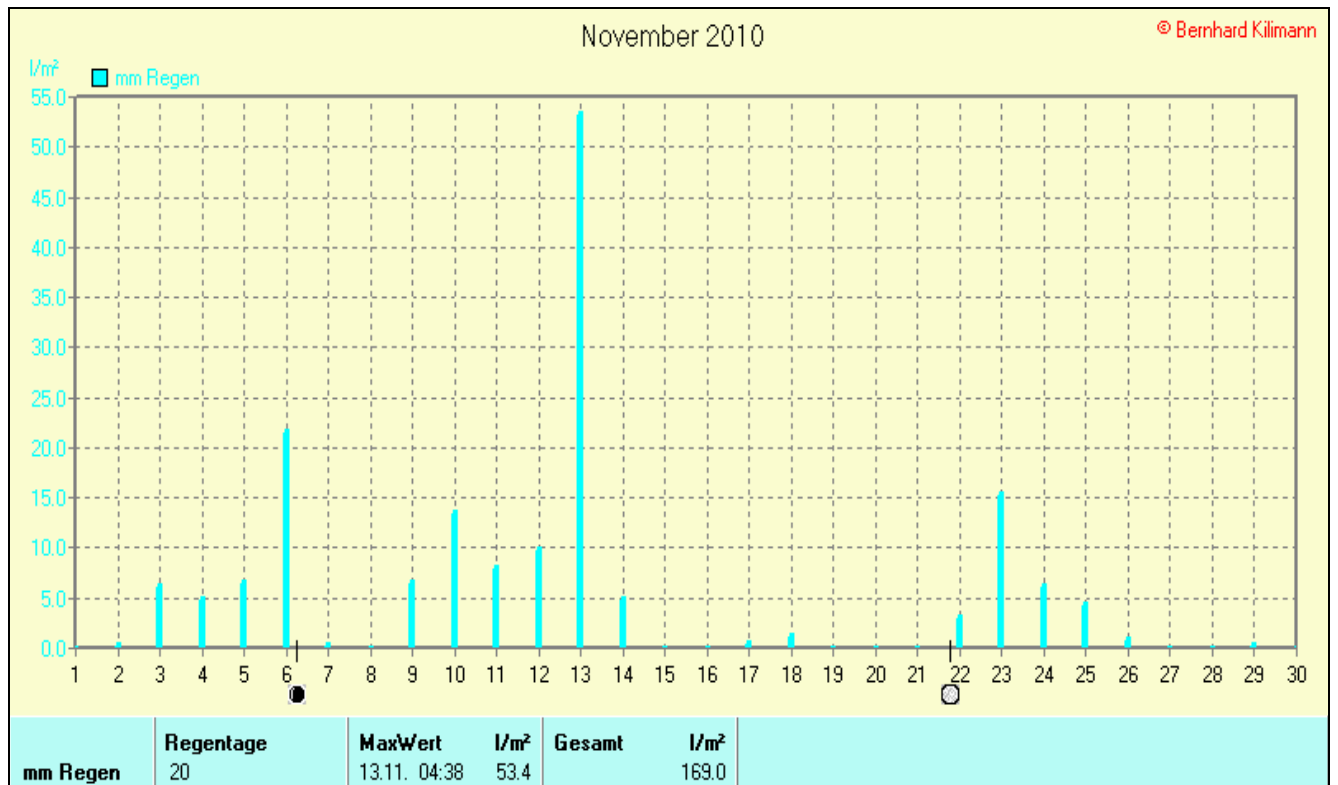
**Mittlere Wind:** 9,1 km/h

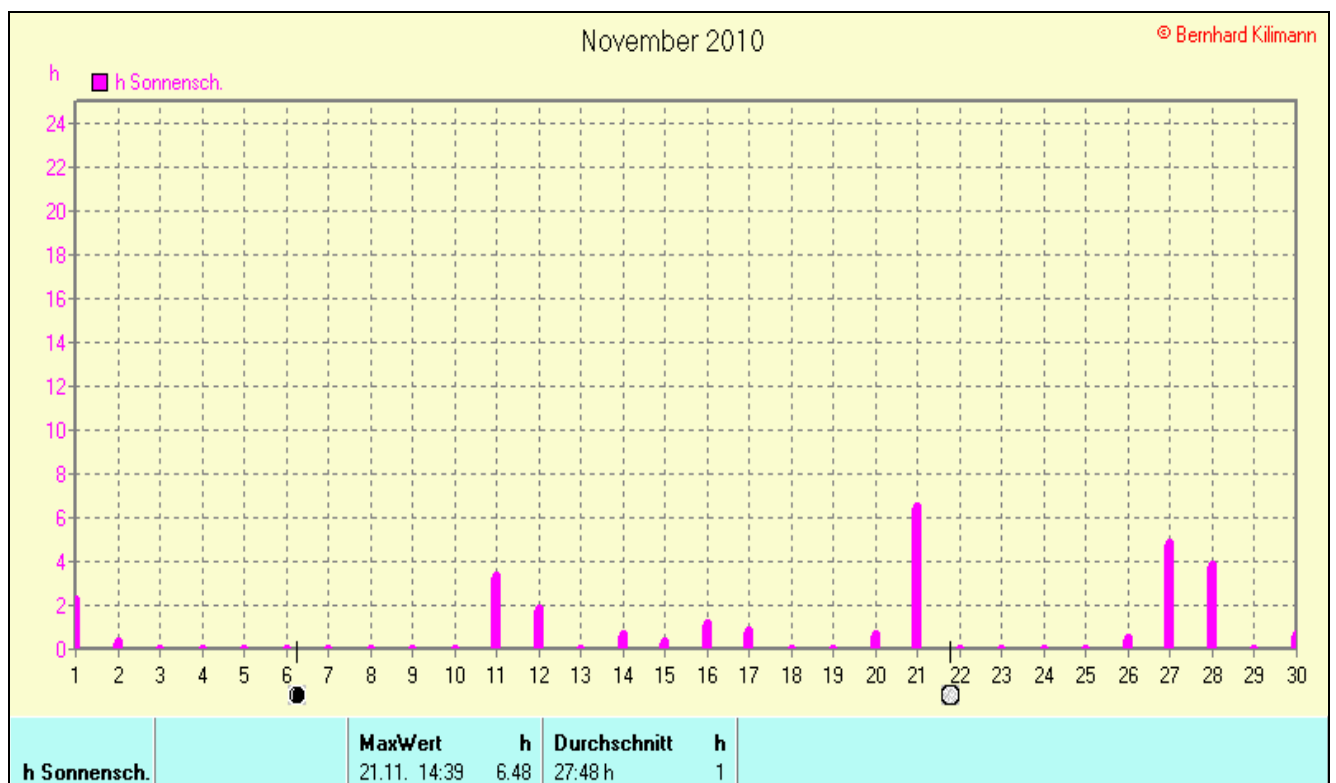
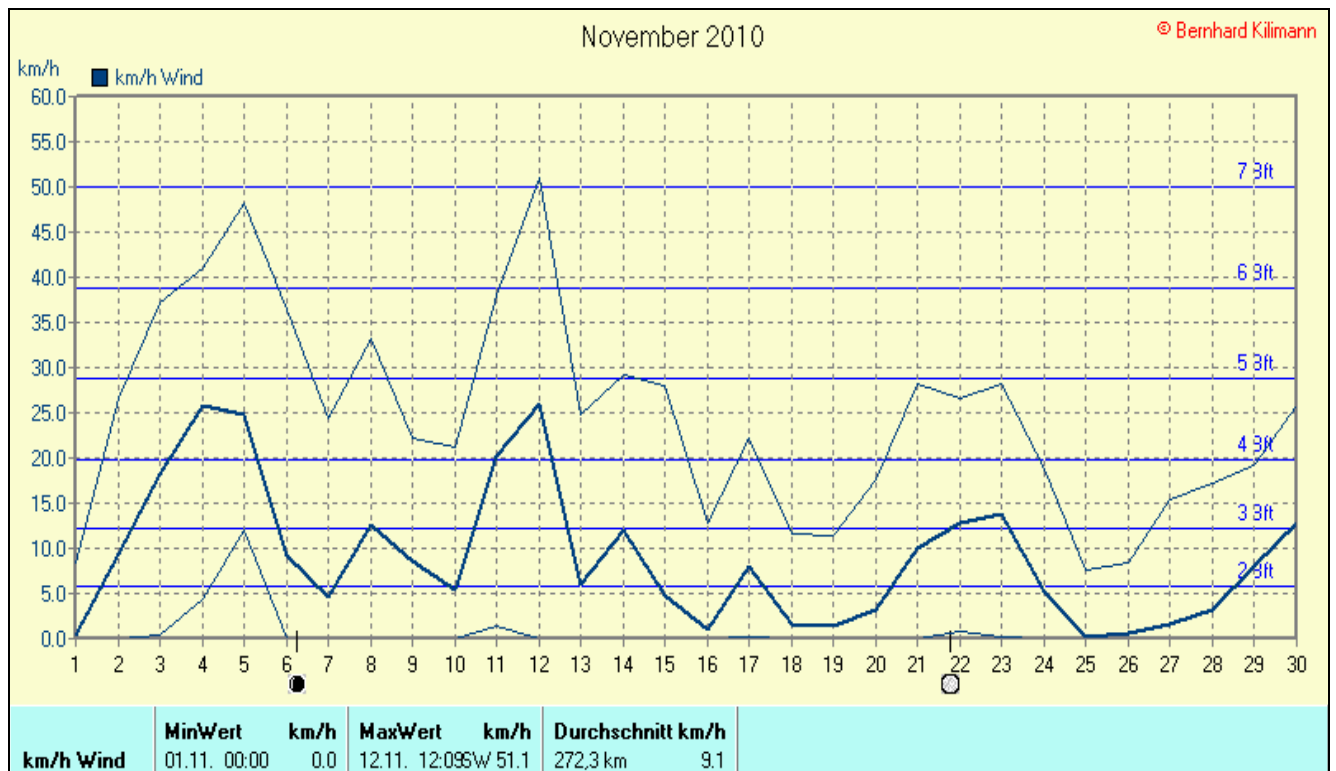
**Sonnenscheindauer:** 27,5 h

Lj.Mittel(Lipp.1961-90): 51,9 h



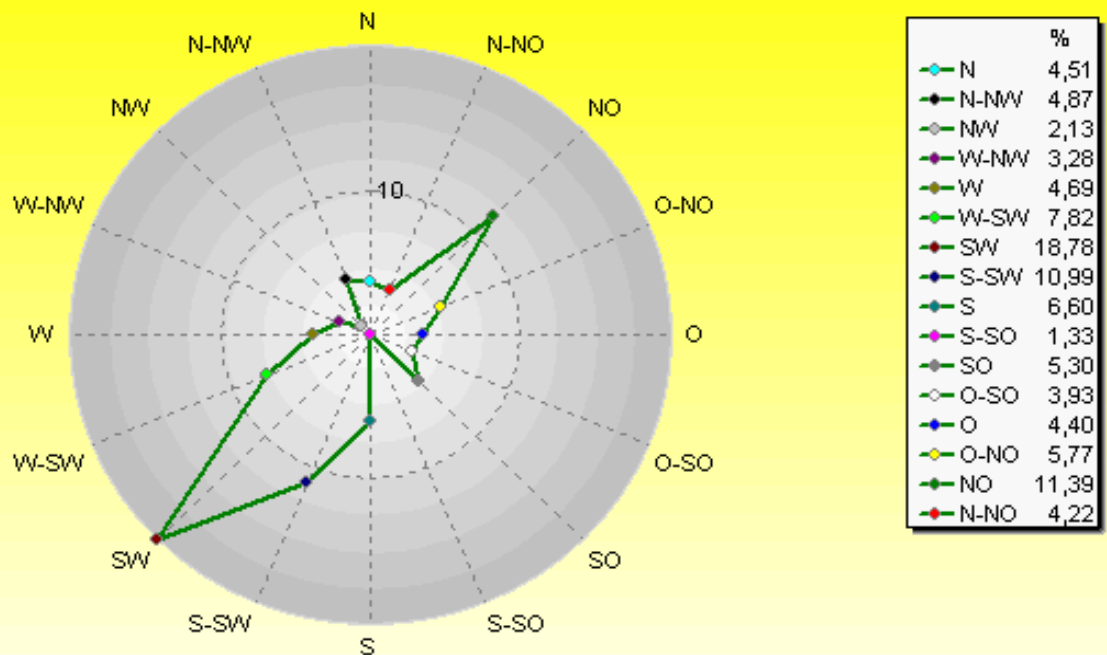






## Verteilung Windrichtung November 2010

### Schlangen, südl. Teutoburger Wald

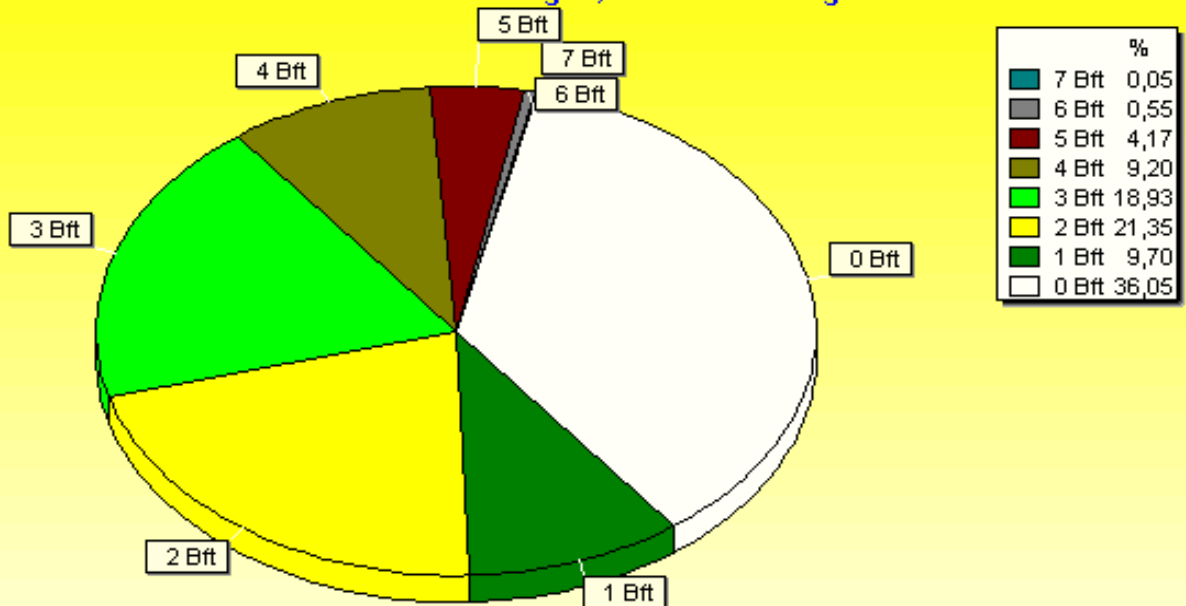


2774 / 1564 Werte -> 36.1% Windstille - Ø 9,1km/h - Max. 51,1km/h - 6534,5 km

© WsWin32 - © Bernhard Kilmann - Schlangen, südl. Teutoburger Wald

## Verteilung Windstärke November 2010

### Schlangen, südl. Teutoburger Wald



4338 Werte - Ø 9,1km/h - Max. 51,1km/h - 6534,5 km

© WsWin32 - © Bernhard Kilmann - Schlangen, südl. Teutoburger Wald

