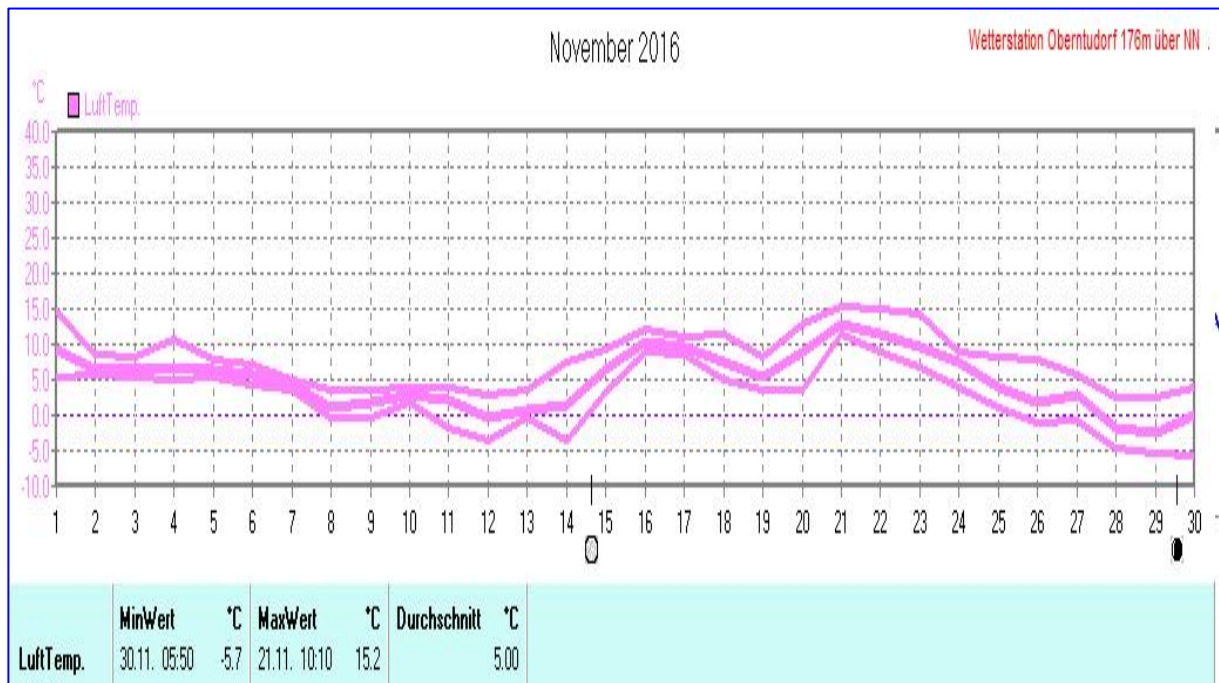
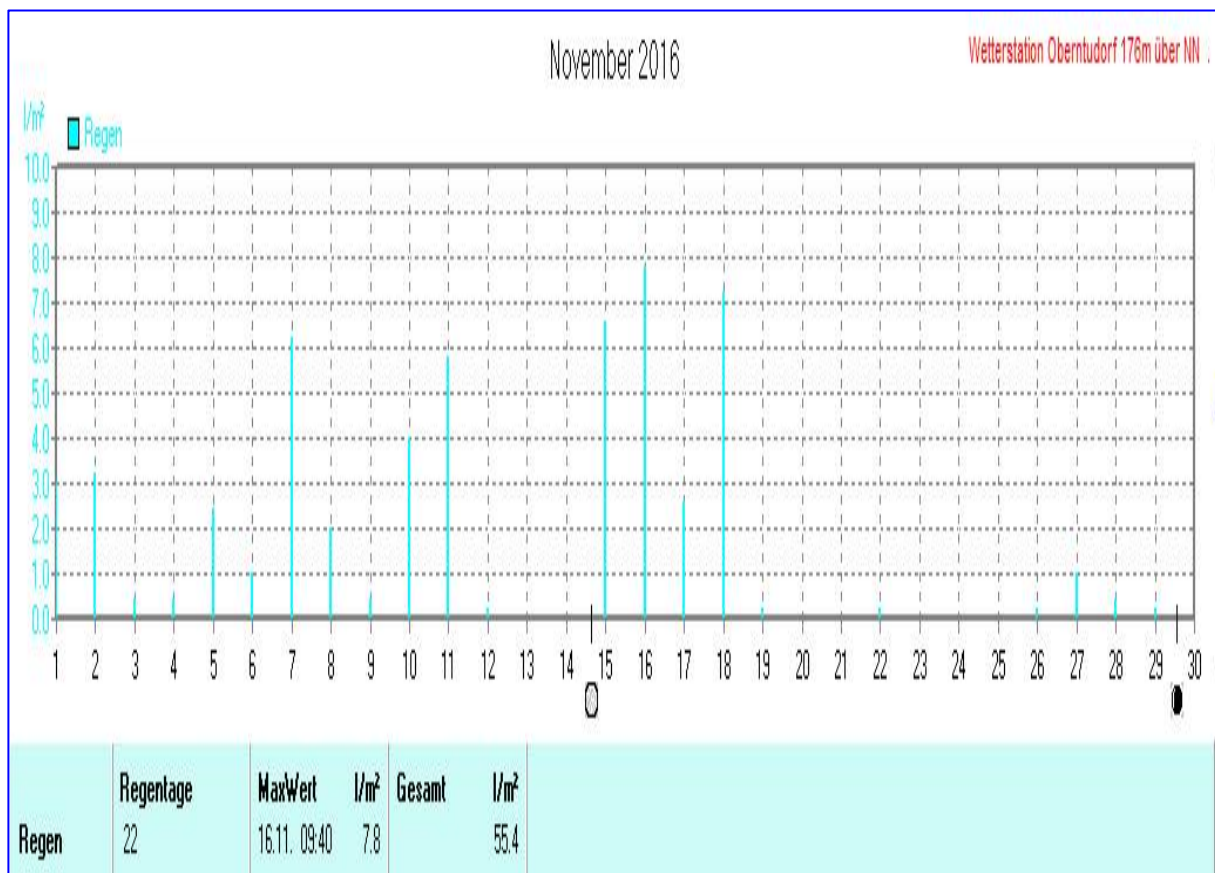
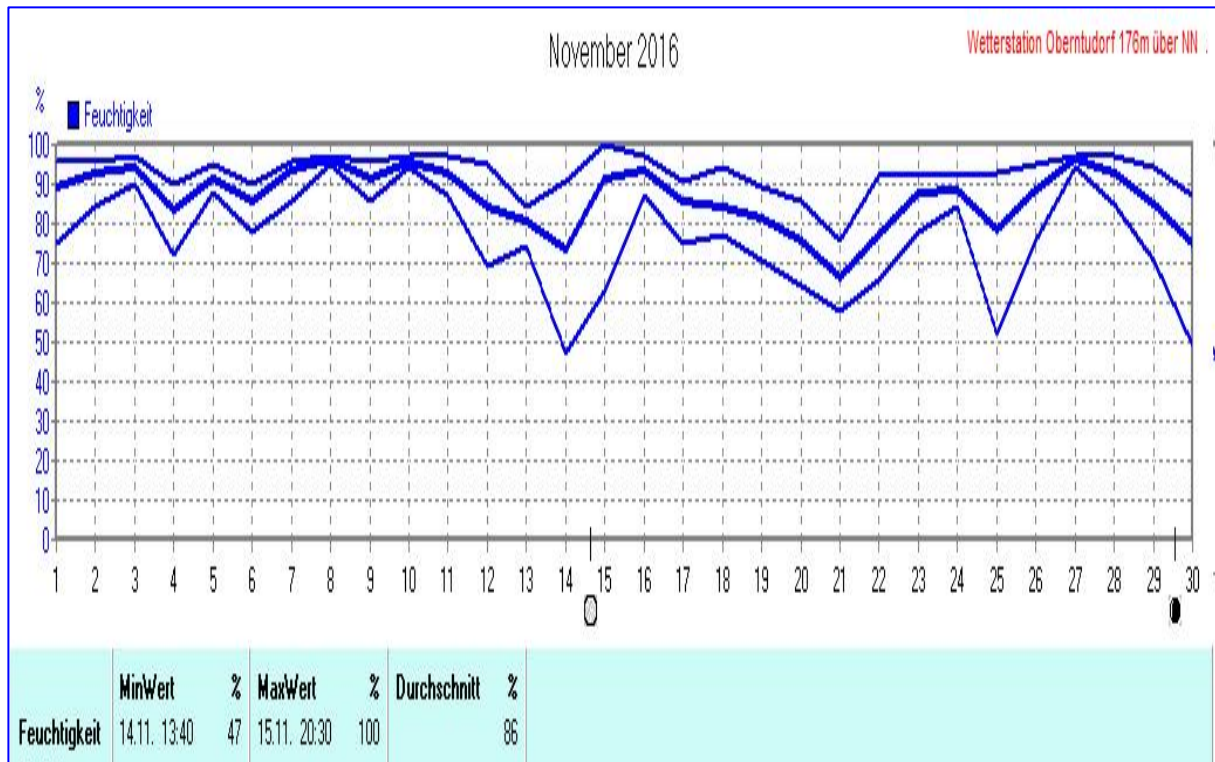


Wetterdaten November 2016 Station Oberntudorf

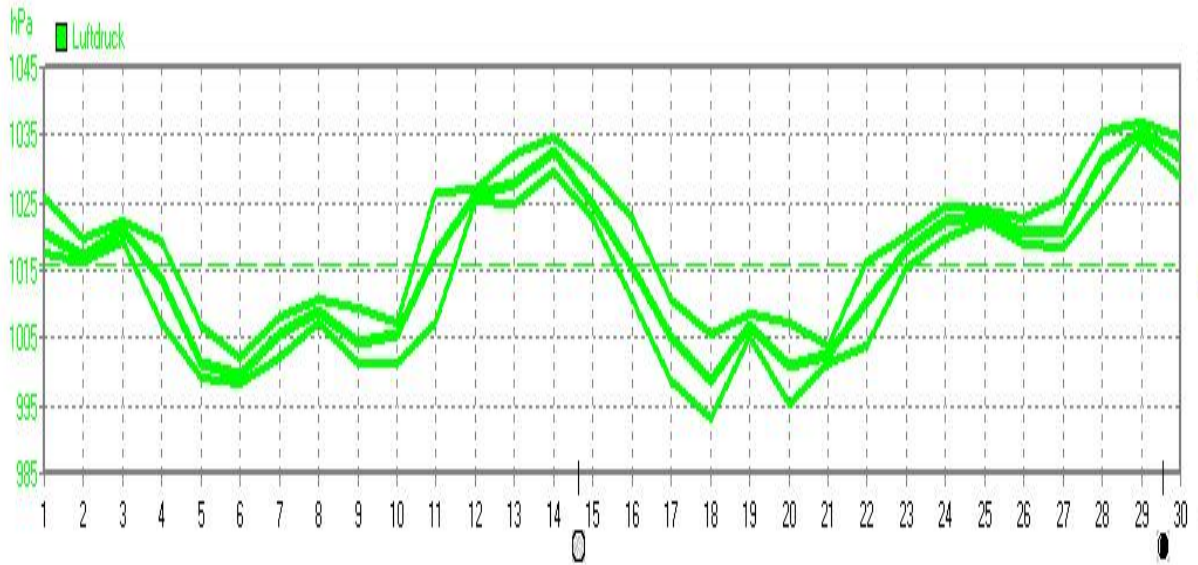
Meßgröße	Minimum	Zeit	Datum	Maximum	Zeit	Datum	Durchschnitt
Lufttemp.	-5,7 °C	05:50	30.11.2016	15,2 °C	10:10	21.11.2016	5,0 °C
Bodentemp.	-5,6 °C	07:00	29.11.2016	13,9 °C	09:50	21.11.2016	4,4 °C
Luftfeuchte	47 %	13:40	14.11.2016	100 %	20:30	15.11.2016	86 %
Luftdruck	993,3 hPa	06:00	18.11.2016	1036,9 hPa	10:20	29.11.2016	1015,6 hPa
Wind km/h				19,3 km/h	20:00	18.11.2016	4,3 km/h
Wind °				SW	20:00	18.11.2016	O-SO
Regen l/m²				7,8 l/m²	09:40	16.11.2016	#55,400 l/m²
Evapotransp.							#13,044 l/m²
Solar				410 W/m²	12:50	20.11.2016	34 W/m²
Sonne h				6:50 h	16:20	14.11.2016	#65:30 h





November 2016

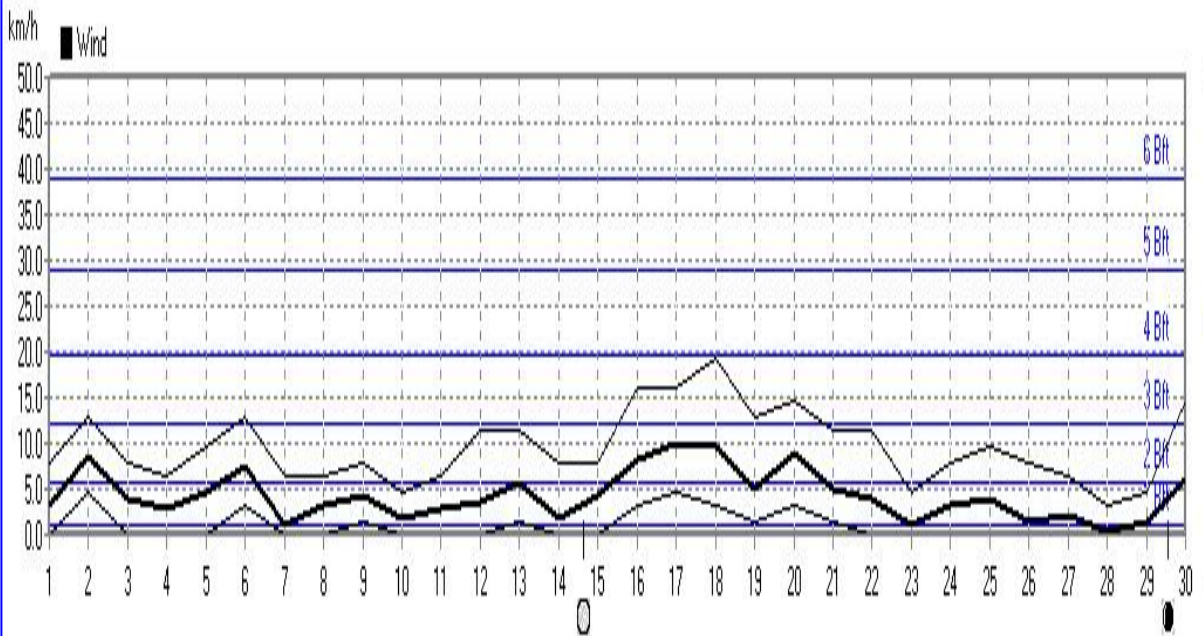
Wetterstation Oberntudorf 176m über NN



	MinWert	hPa	MaxWert	hPa	Durchschnitt	hPa
Luftdruck	18.11. 06:00	993.3	29.11. 10:20	1036.9	1015.6	

November 2016

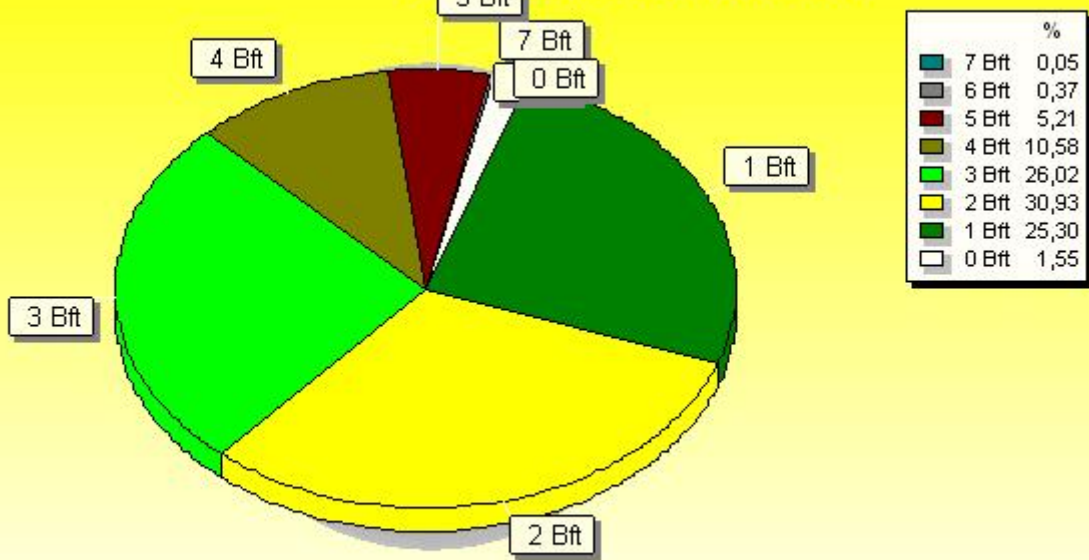
Wetterstation Oberntudorf 176m über NN



	MinWert	km/h	MaxWert	km/h	Durchschnitt	km/h
Wind	01.11. 00:30	0.0	18.11. 20:00SW/19.3	8501.6 km	4.3	

Windböen: Verteilung Windstärke November 2016

33154 Salzotten-Oberntudorf, NRW

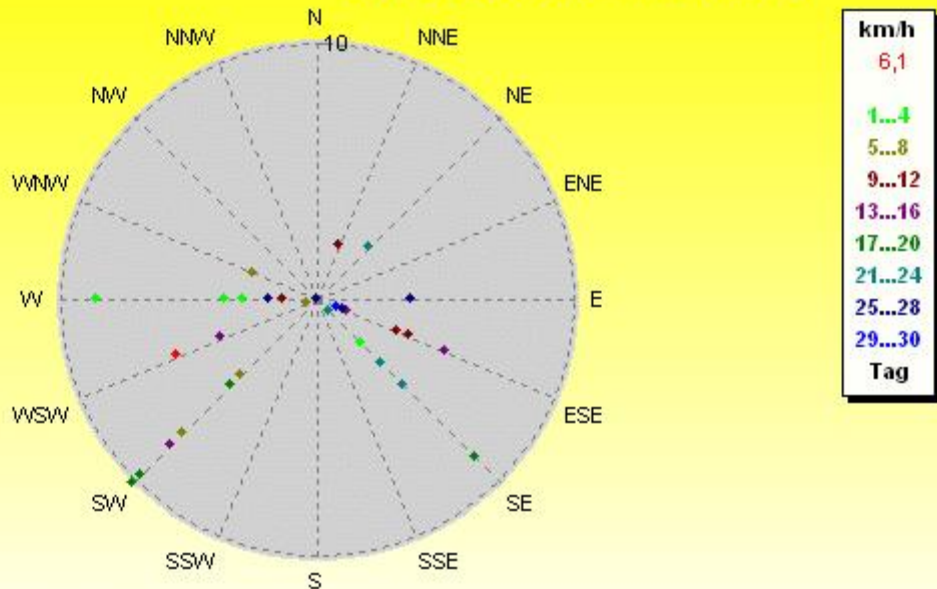


4320 Werte - Ø 11,8km/h - Max. 54,7km/h = Windböen - 8501.6 km

© WsWin32 - Wetterstation Oberntudorf 176m über NN . - © 1999-2016 Jürgen Pinger - Davis VantagePro2Plus

Verteilung Windrichtung/Windgeschwindigkeit November 2016

33154 Salzotten-Oberntudorf, NRW

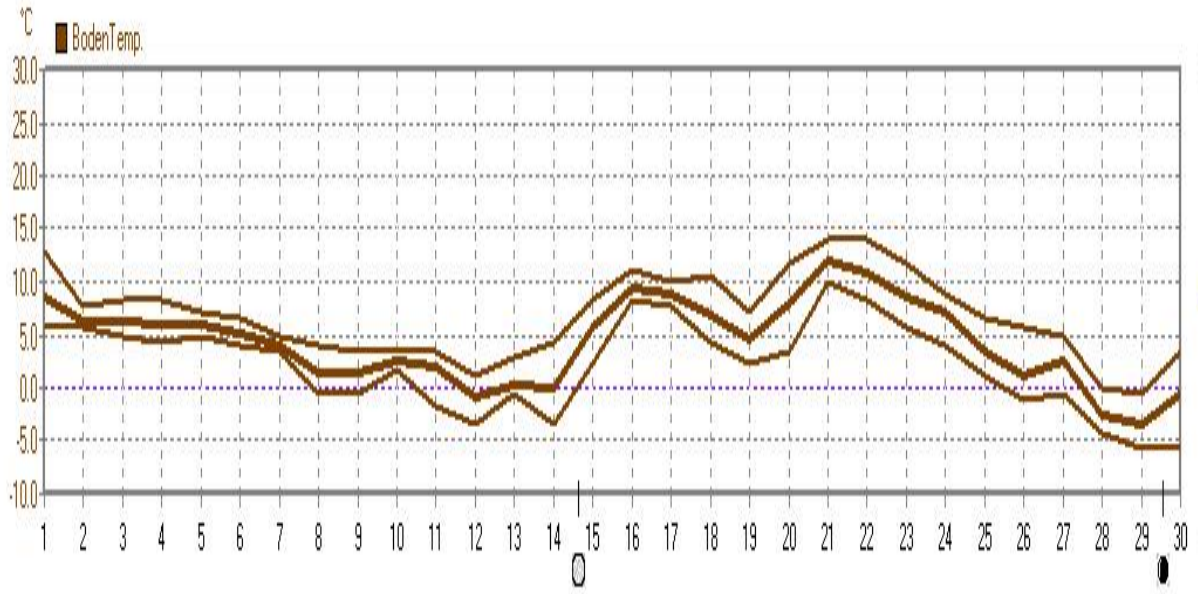


30 Werte - Ø 4,3km/h - Max. 19,3km/h - 8501.6 km

© WsWin32 - Wetterstation Oberntudorf 176m über NN . - © 1999-2016 Jürgen Pinger - Davis VantagePro2Plus

November 2016

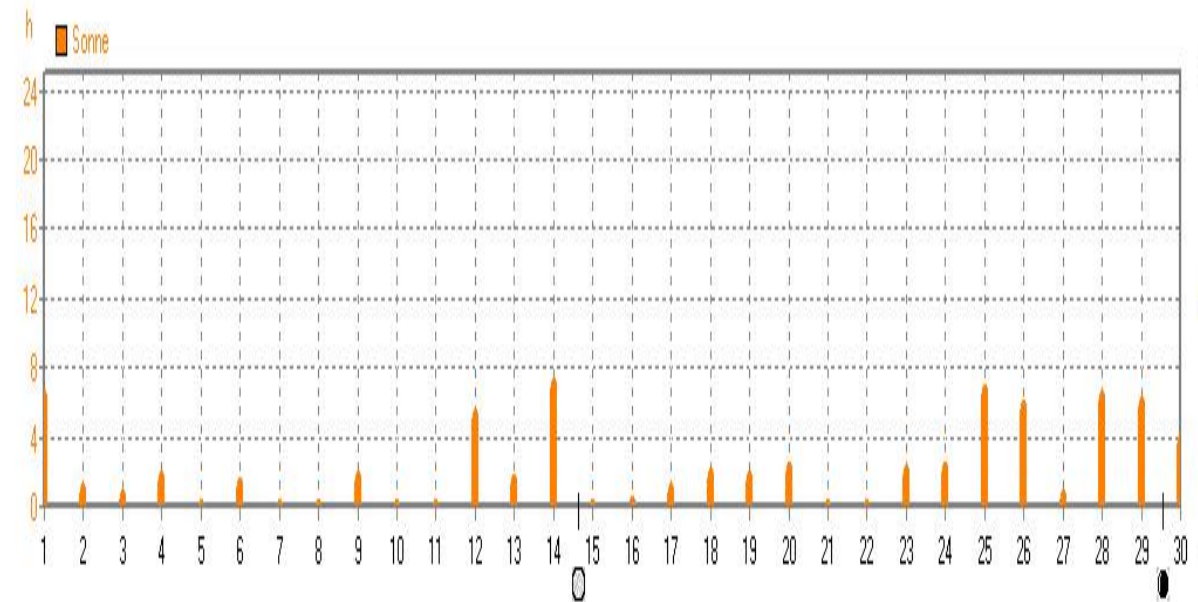
Wetterstation Oberntudorf 176m über NN



	MinWert	°C	MaxWert	°C	Durchschnitt	°C
BodenTemp.	29.11. 07:00	-5.6	21.11. 09:50	13.9		4.39

November 2016

Wetterstation Oberntudorf 176m über NN



	MaxWert	h	Durchschnitt	h
Sonne	14.11. 16:20	6.83	65:30 h	2