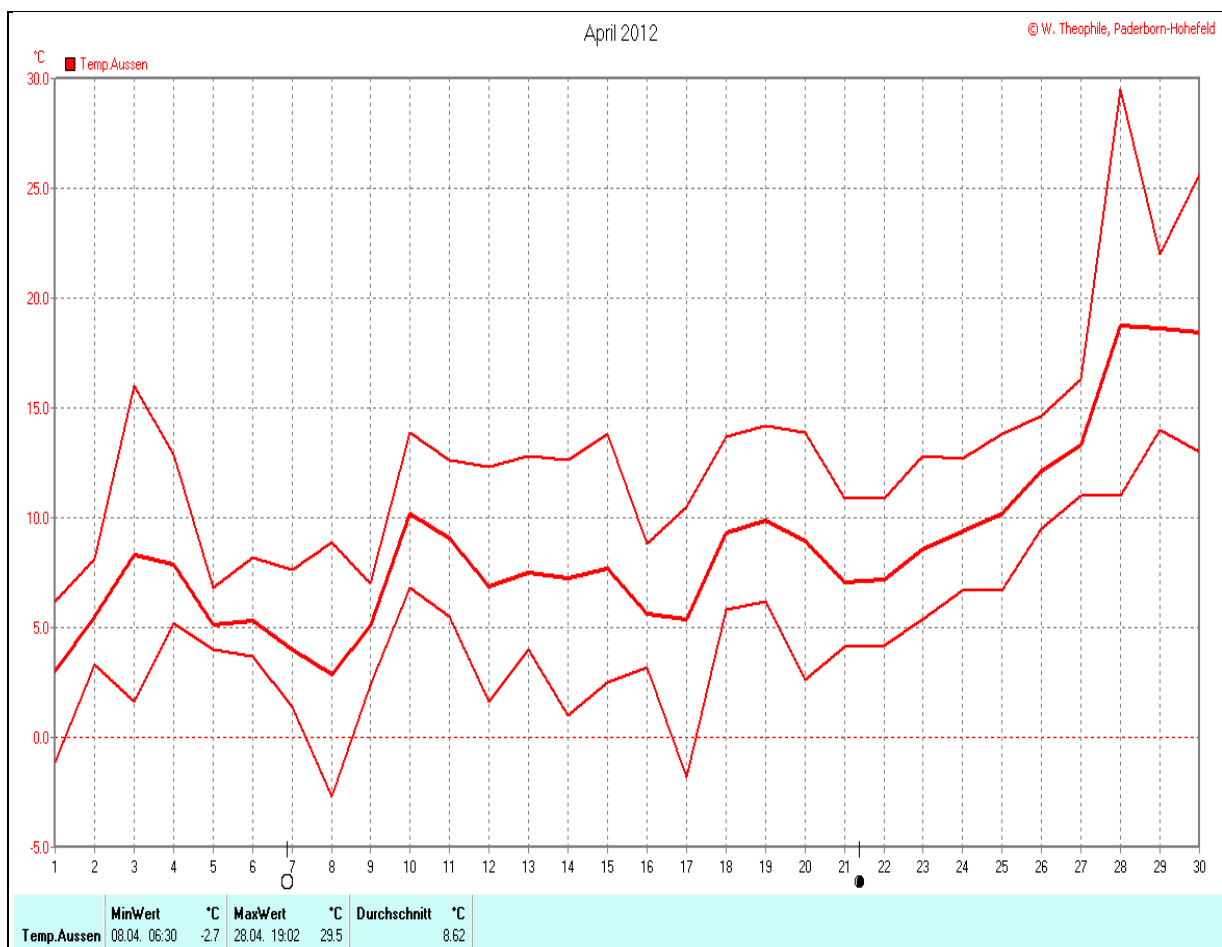


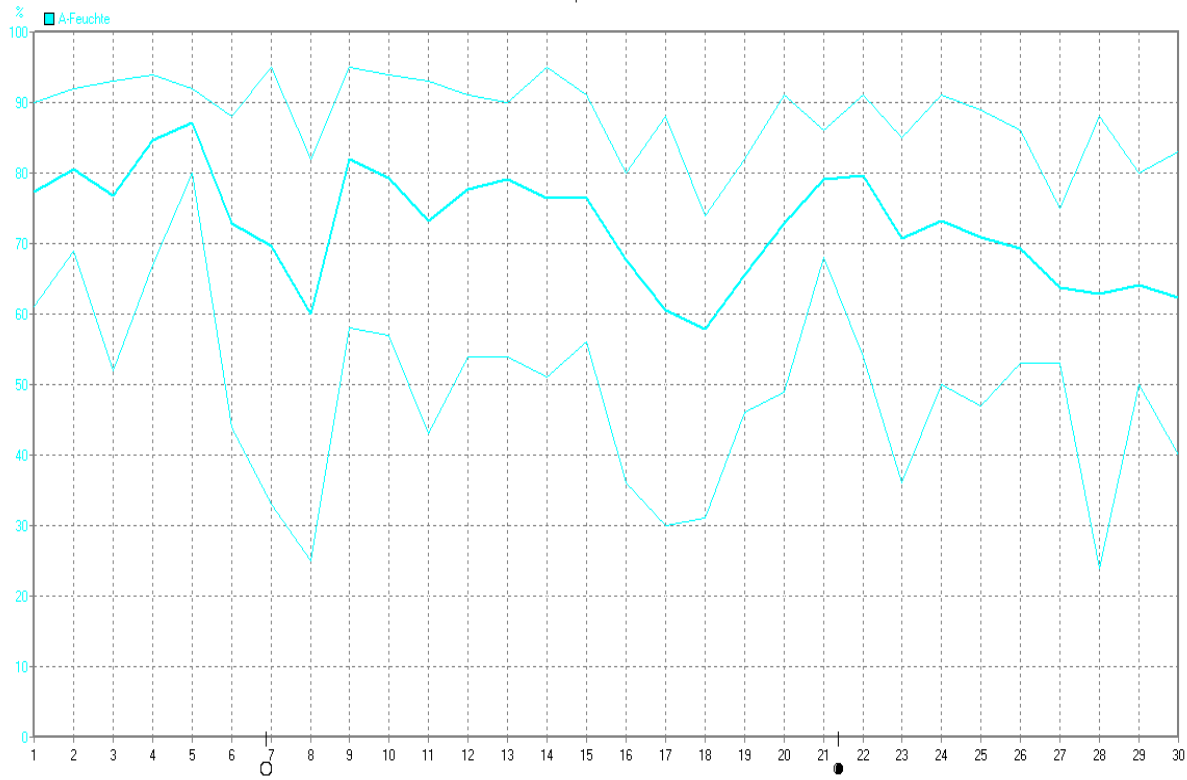
## Wettertabelle und Grafiken April 2012 Station PB-Hohfeld (Dahl)

<u>Wetterdaten April 2012 Station PB-Hohfeld (Dahl)</u>							
© W. Theophile, Paderborn-Hohfeld							
Meßgröße	Minimum	Zeit	Datum	Maximum	Zeit	Datum	Durchschnitt
Ausstemp.	-2,7 °C	06:30	08.04.2012	29,5 °C	19:02	28.04.2012	8,6 °C
Bodentemp.	1,0 °C	06:59	08.04.2012	20,2 °C	17:31	28.04.2012	8,4 °C
Luftfeuchte	24%	18:01	28.04.2012	95%	03:30	07.04.2012	72%
Luftdruck	991 hPa	02:59	19.04.2012	1019 hPa	21:30	16.04.2012	1005 hPa
Wind km/h				42,3 km/h	17:30	21.04.2012	15,9 km/h
Wind°				S-SW	17:30	21.04.2012	SO
Regen l/m <sup>2</sup>				5,9 mm	16:30	09.04.2012	#26,640 mm
Helligkeit				107 klux	12:31	27.04.2012	32,4 klux
Solar W/m <sup>2</sup>				634 W/m <sup>2</sup>	12:31	27.04.2012	166 W/m <sup>2</sup>
Sonne h				10,00 h	18:29	08.04.2012	#192:57 h



April 2012

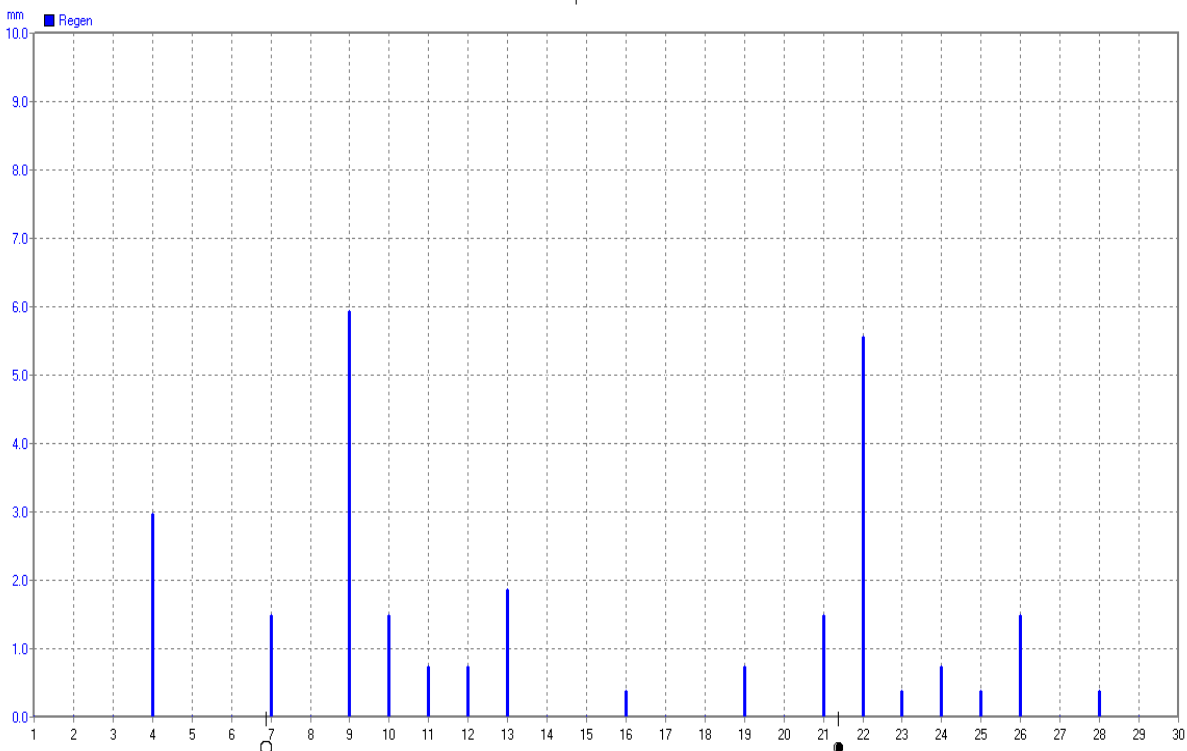
© W. Theophile, Paderborn-Hohefeld



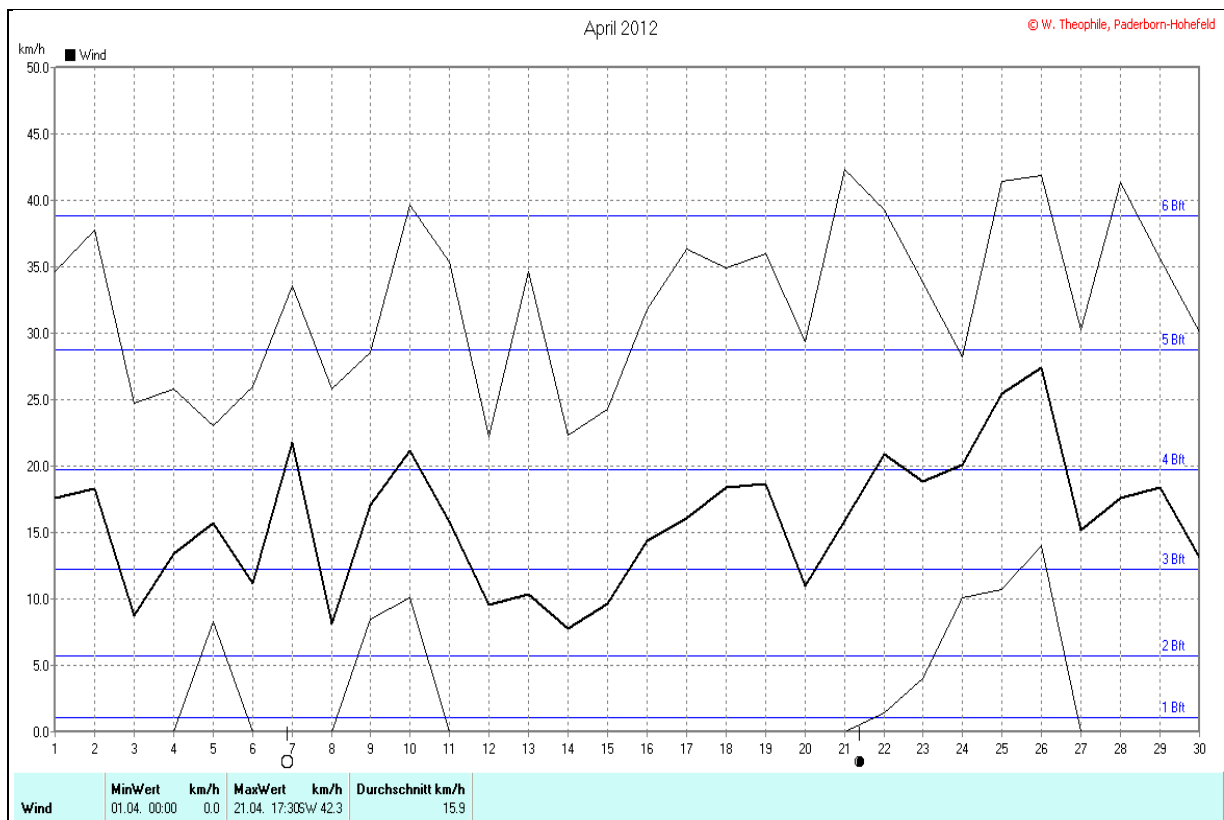
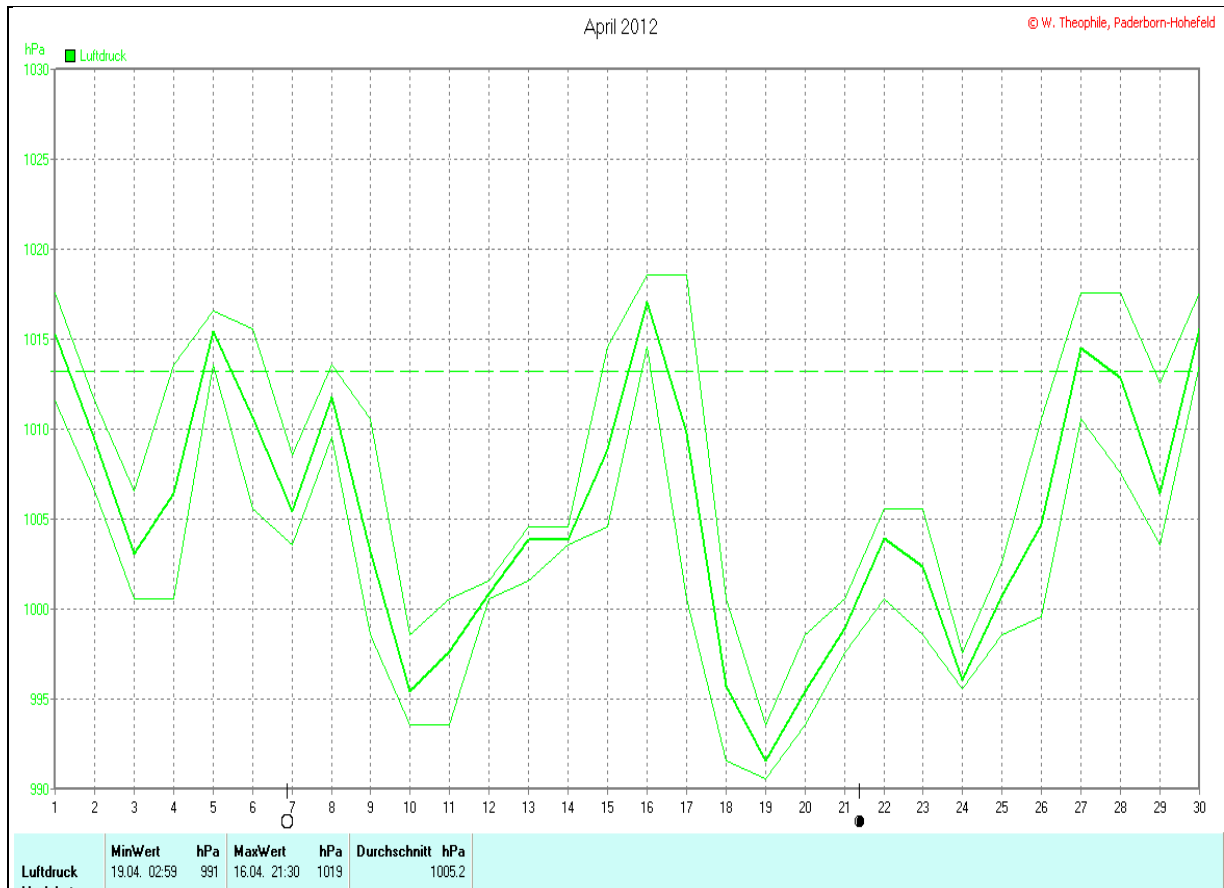
<b>A-Feuchte</b>	<b>MinWert</b>	<b>%</b>	<b>MaxWert</b>	<b>%</b>	<b>Durchschnitt</b>	<b>%</b>
	28.04. 18:01	24	07.04. 03:30	95		72

April 2012

© W. Theophile, Paderborn-Hohefeld

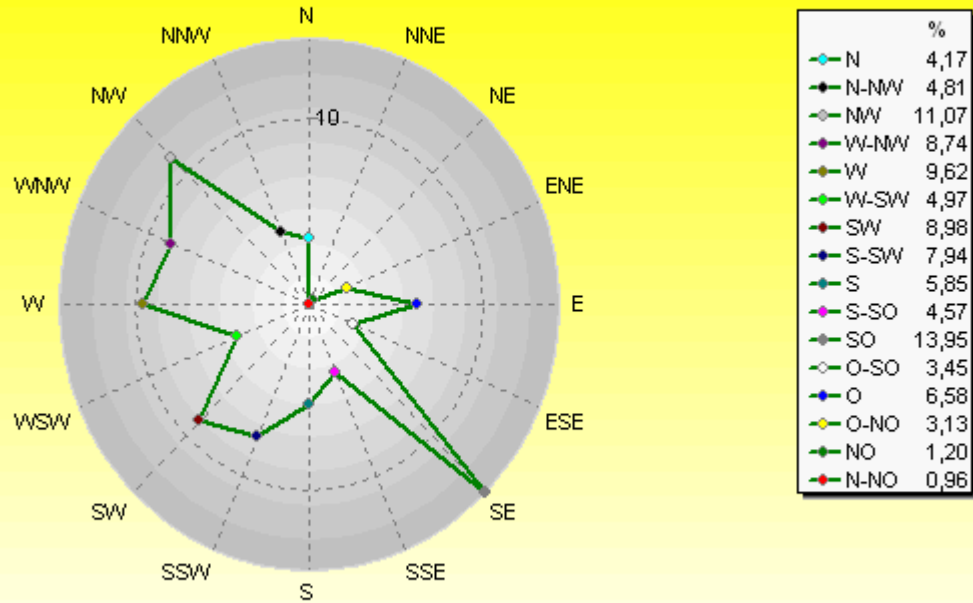


<b>Regen</b>	<b>Regentage</b>	<b>MaxWert</b>	<b>mm</b>	<b>Gesamt</b>	<b>mm</b>
	16	09.04. 16:30	5.9		26.6



### Verteilung Windrichtung April 2012

### Paderborn-Hohefeld

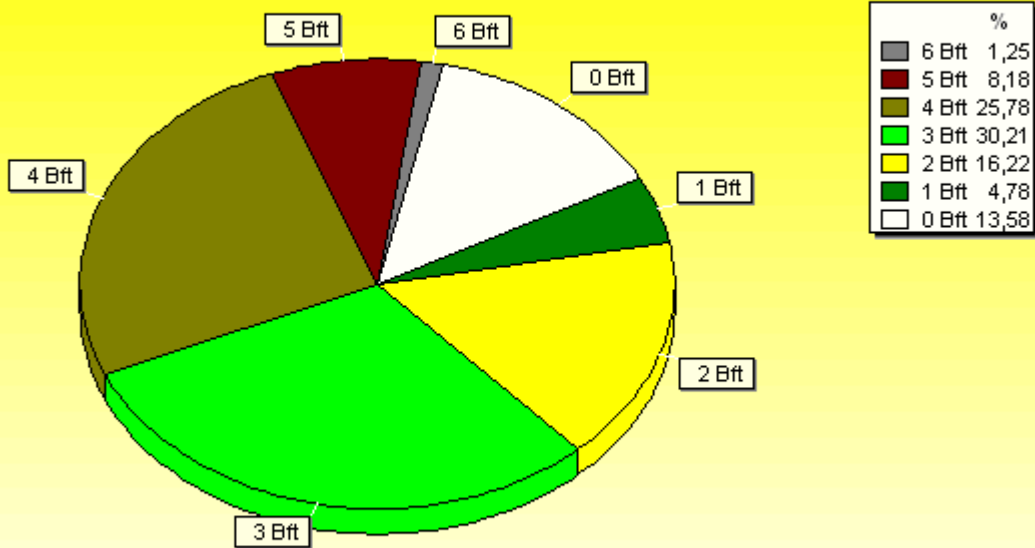


1247 / 196 Werte -> 13.6% Windstille - Ø 15,9km/h - Max. 42,3km/h

© WsWin32

### Verteilung Windstärke April 2012

### Paderborn-Hohefeld

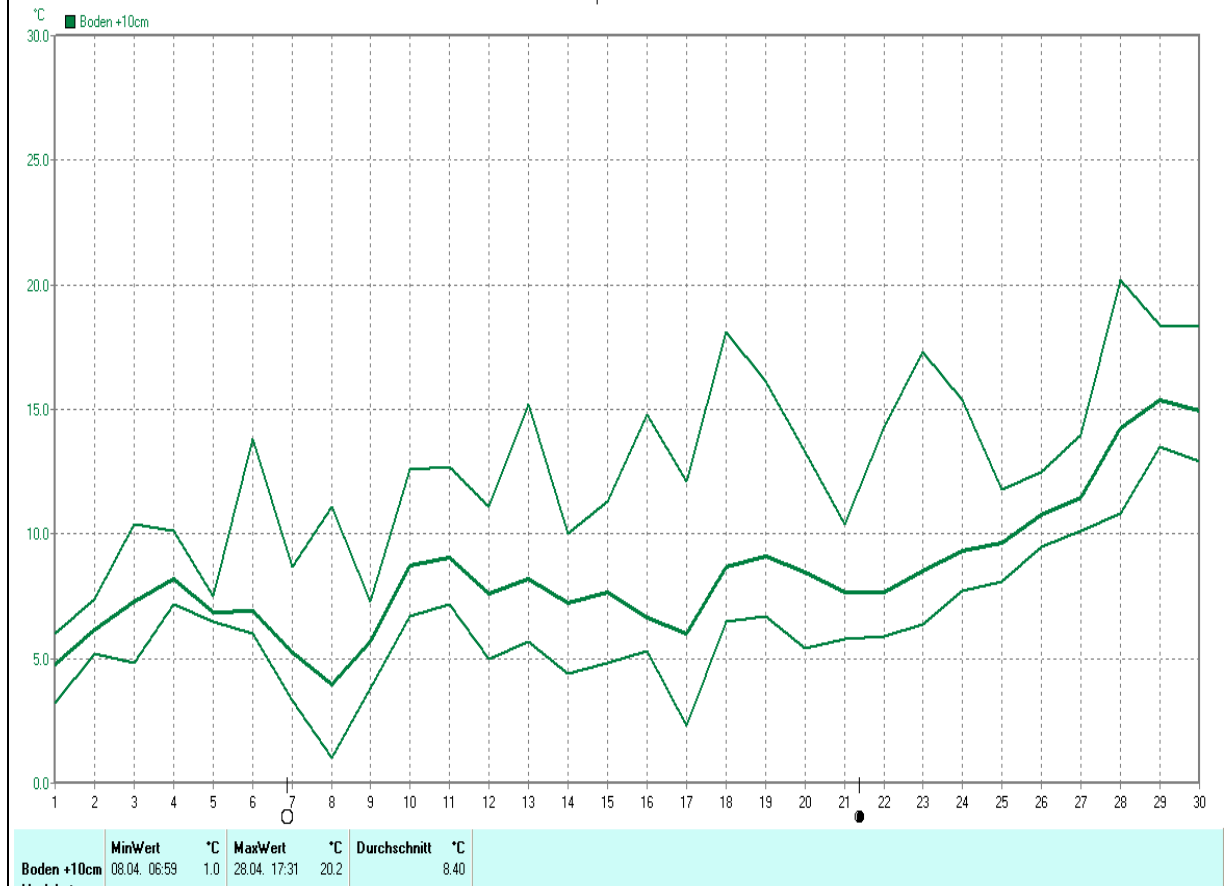


1443 Werte - Ø 15,9km/h - Max. 42,3km/h

© WsWin32

April 2012

© W. Theophile, Paderborn-Hohefeld



April 2012

© W. Theophile, Paderborn-Hohefeld

