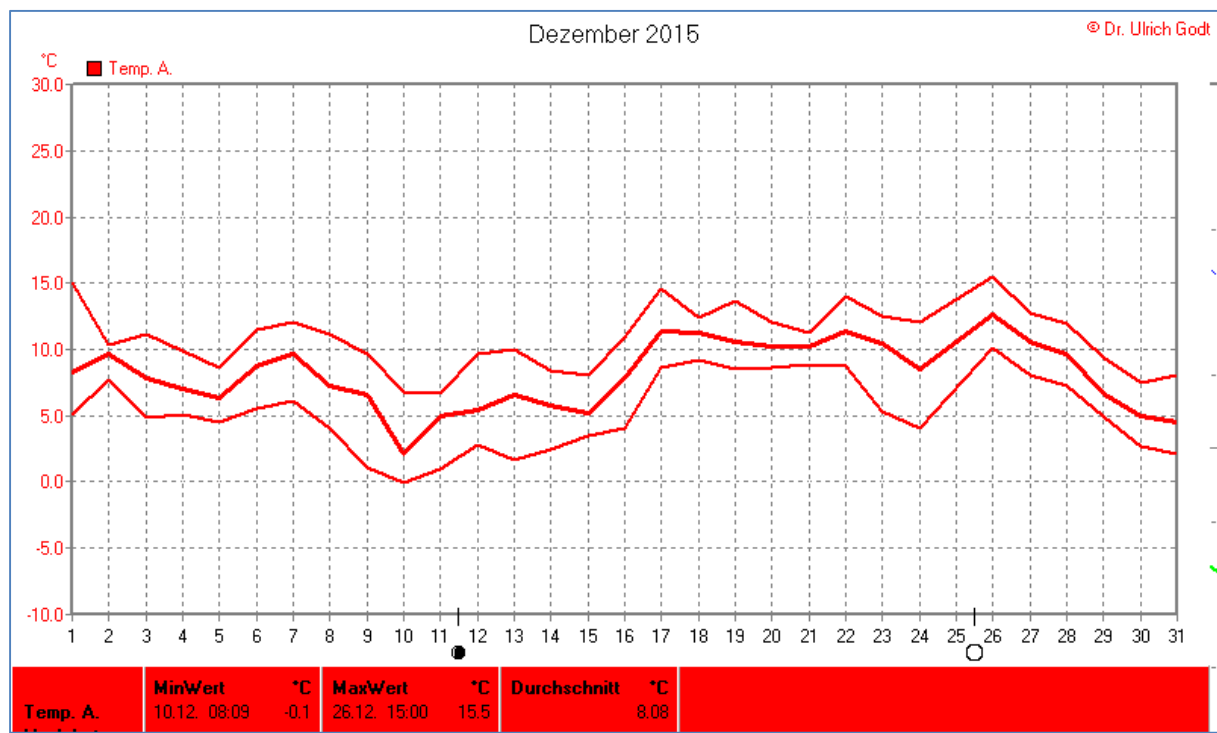
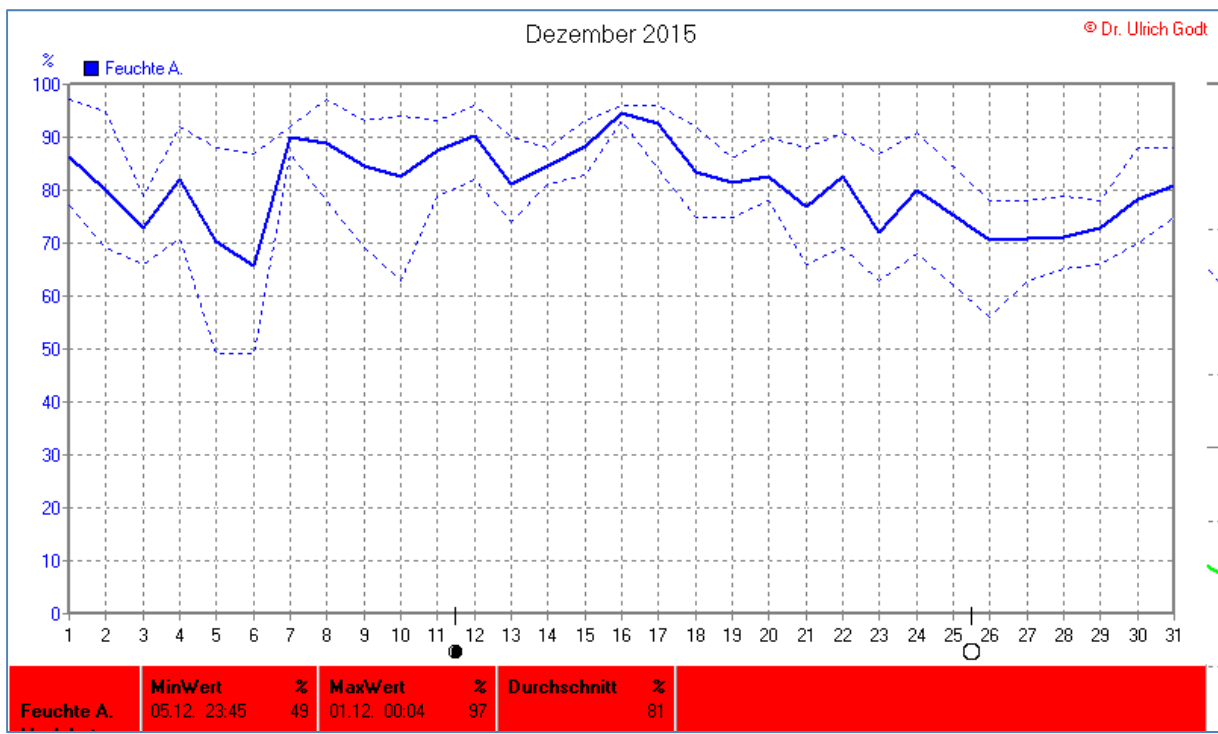
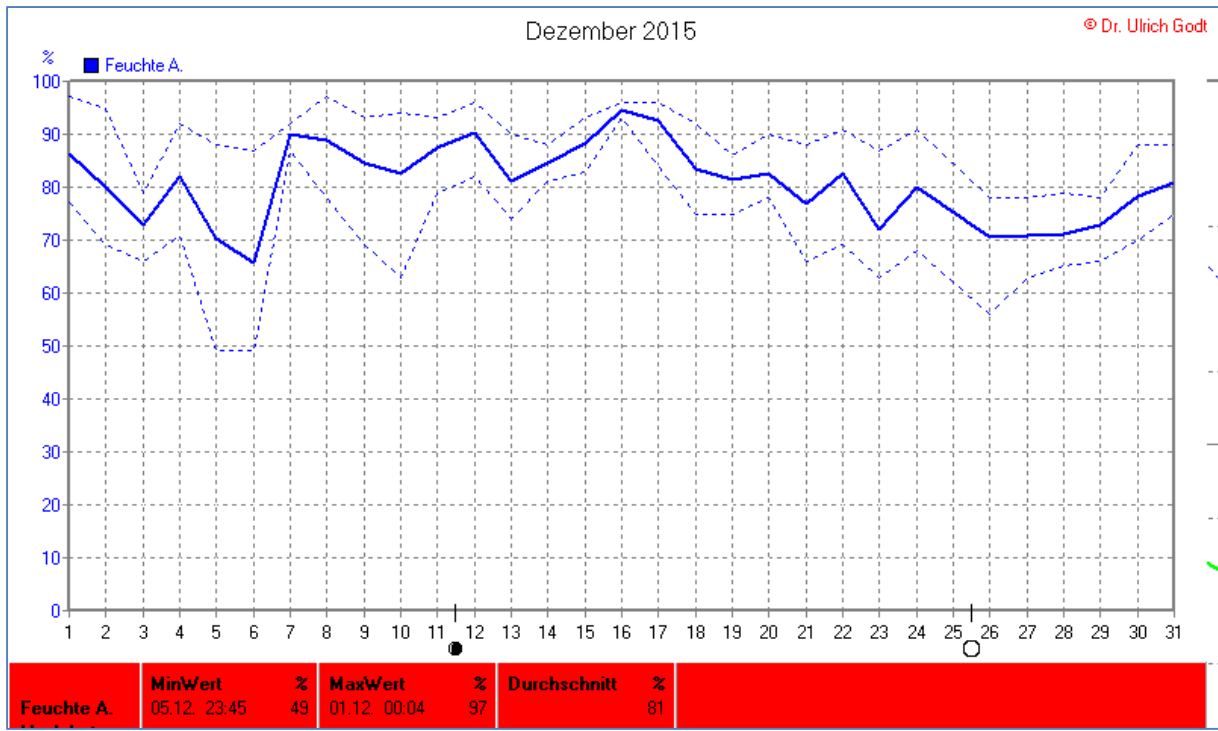
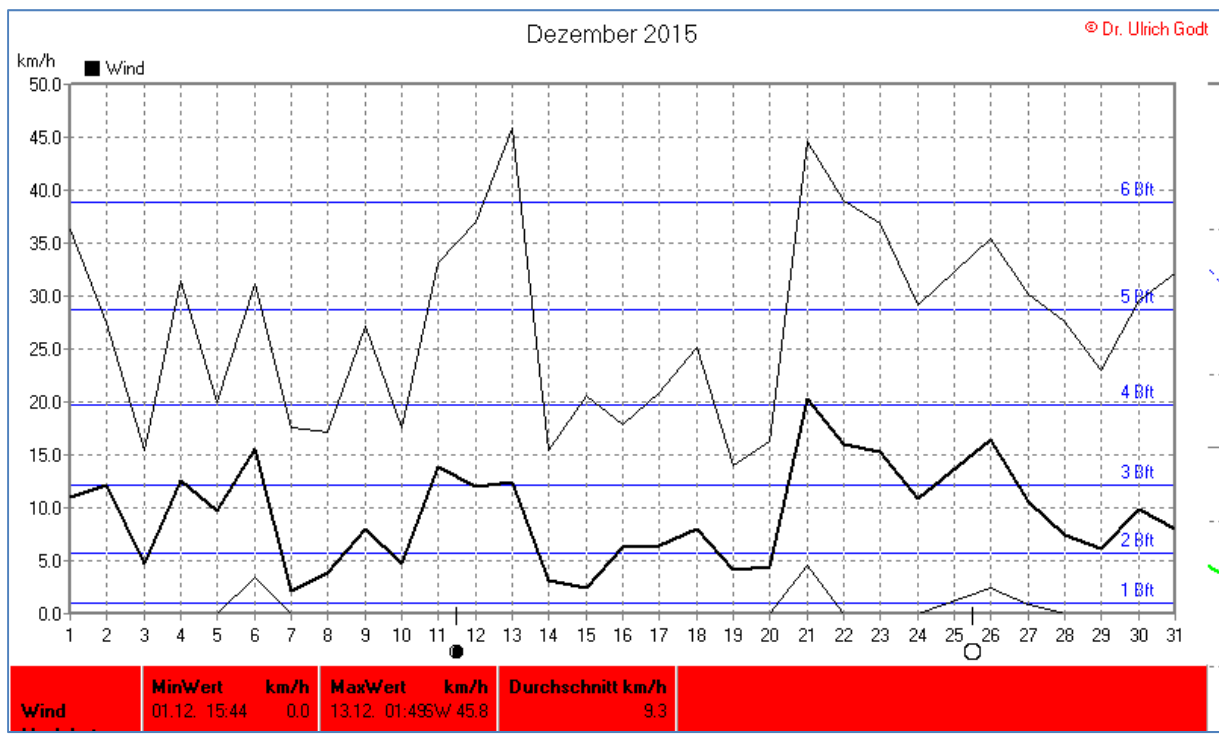
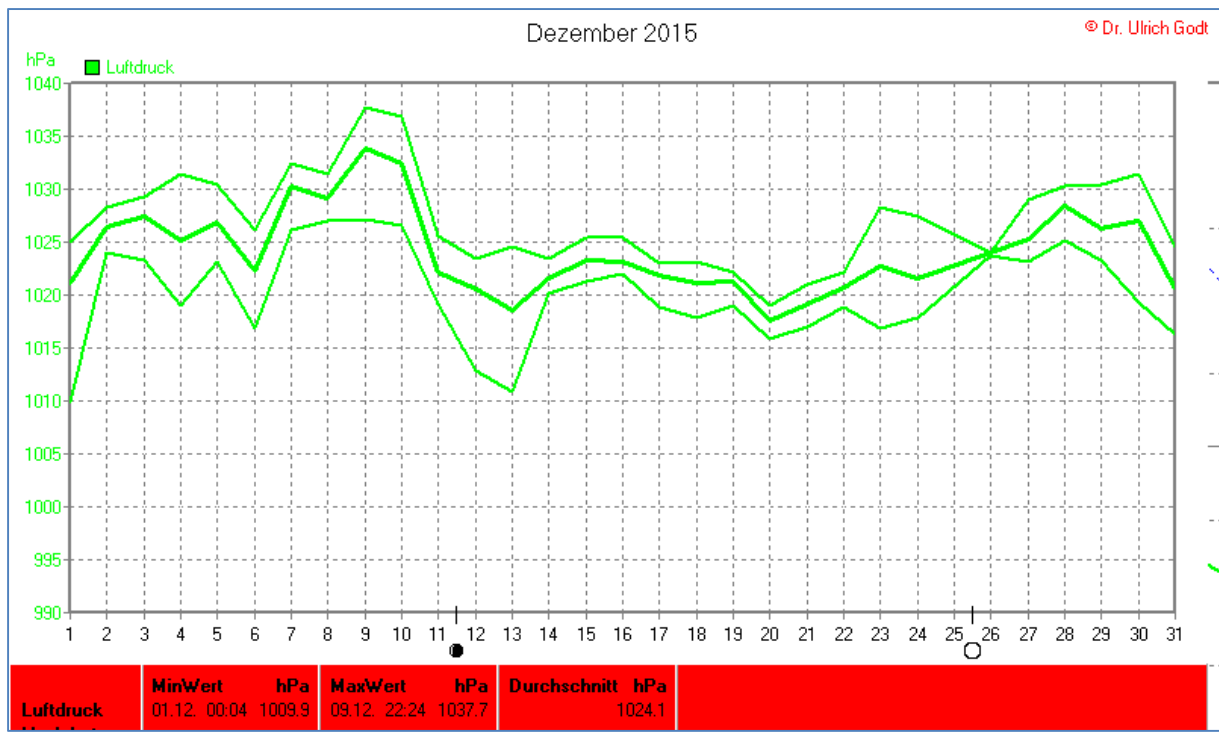


## Wettertabelle und Grafiken Dezember 2015 Station Elsen

Wetterdaten Dezember 2015 Station Elsen							
© Dr. Ulrich Godt							
Meßgröße	Minimum	Zeit	Datum	Maximum	Zeit	Datum	Durchschnitt
Temperatur Außen 2m	-0,1 °C	08:09	10.12.2015	15,5 °C	15:00	26.12.2015	8,1 °C
Temp.Erdboden 5cm	3,0 °C	02:29	10.12.2015	15,6 °C	18:29	11.12.2015	8,7 °C
Luftfeuchte Außen	49 %	23:45	05.12.2015	97 %	00:04	01.12.2015	81 %
Luftdruck	1009,9 hPa	00:04	01.12.2015	1037,7 hPa	22:24	09.12.2015	1024,1 hPa
Wind km/h				45,8 km/h	01:49	13.12.2015	9,3 km/h
Wind °				W-SW	01:49	13.12.2015	W-SW
Regenmenge				22,8 l/m <sup>2</sup>	18:15	01.12.2015	#57,456 l/m <sup>2</sup>
Sonnenschein-Zeit				5:19 h	14:29	08.12.2015	#59:36 h

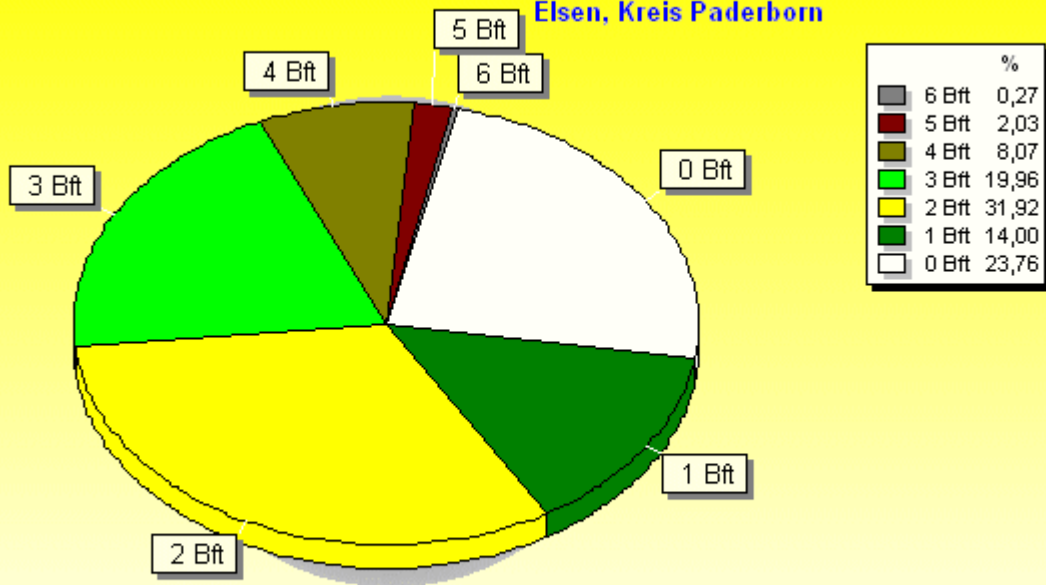






### Verteilung Windstärke Dezember 2015

Elsen, Kreis Paderborn

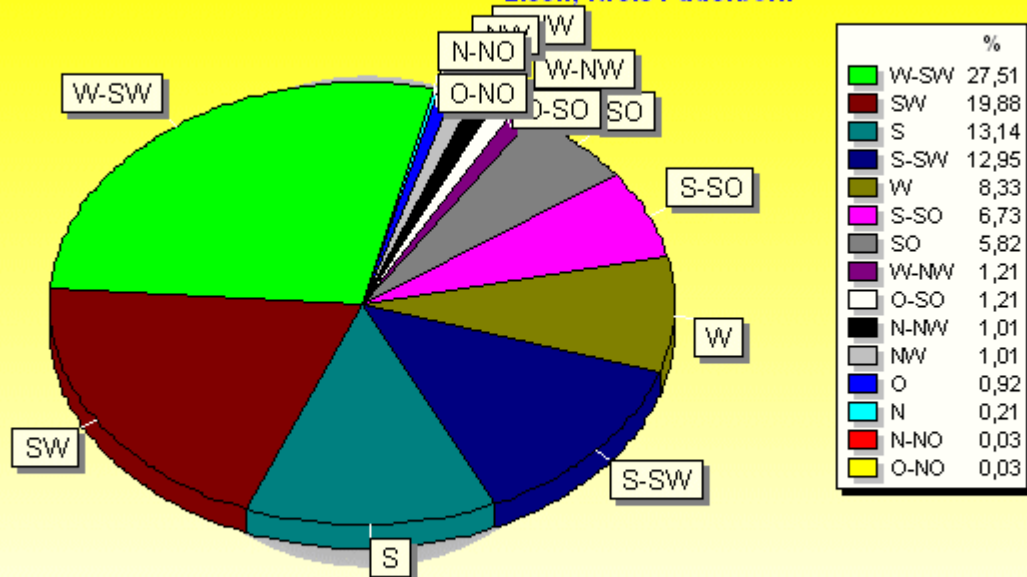


8143 Werte - Ø 9,3km/h - Max. 45,8km/h

© WsWin32 - © Dr. Ulrich Godt - Elsen, Kreis Paderborn

### Verteilung Windrichtung Dezember 2015

Elsen, Kreis Paderborn



6208 / 1935 Werte -> 23.8% Windstille - Ø 9,3km/h - Max. 45,8km/h

© WsWin32 - © Dr. Ulrich Godt - Elsen, Kreis Paderborn

