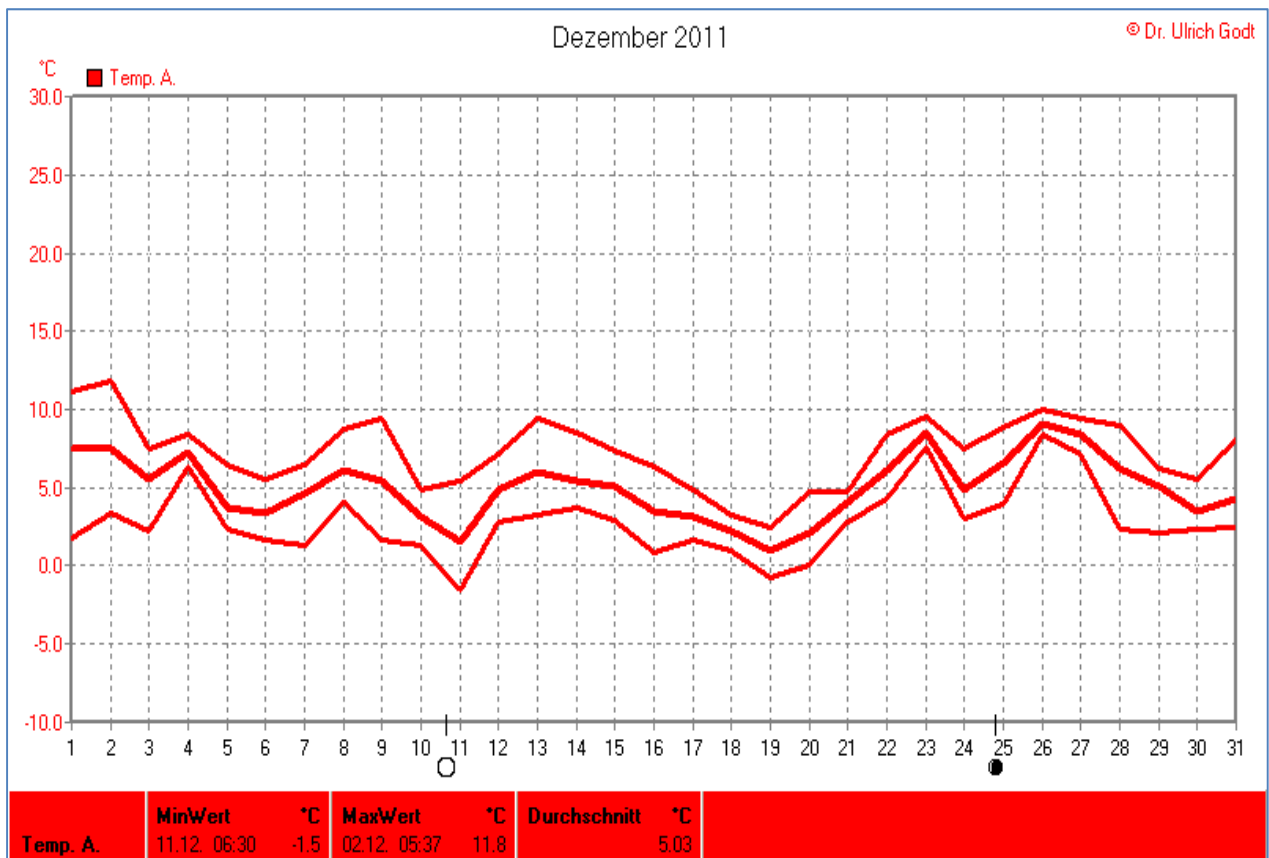
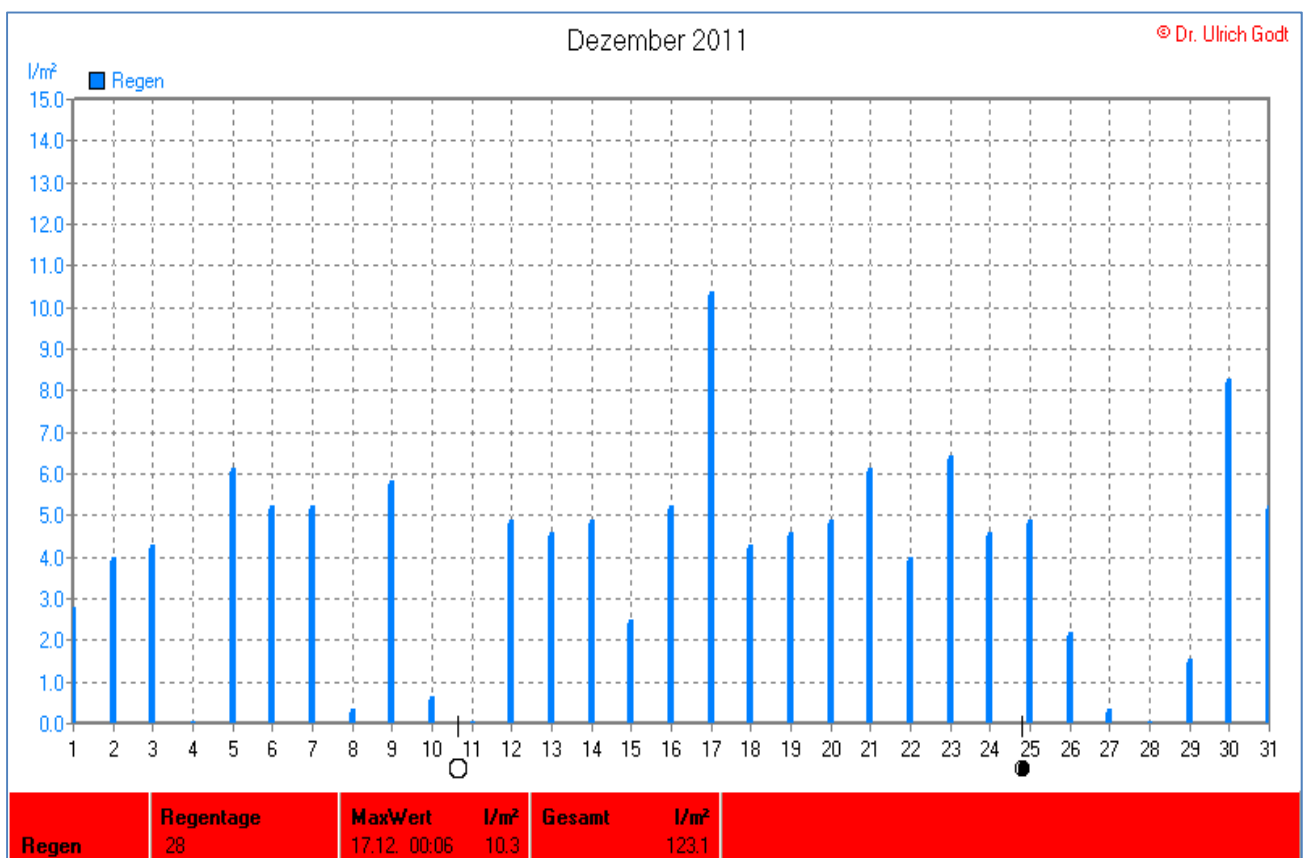
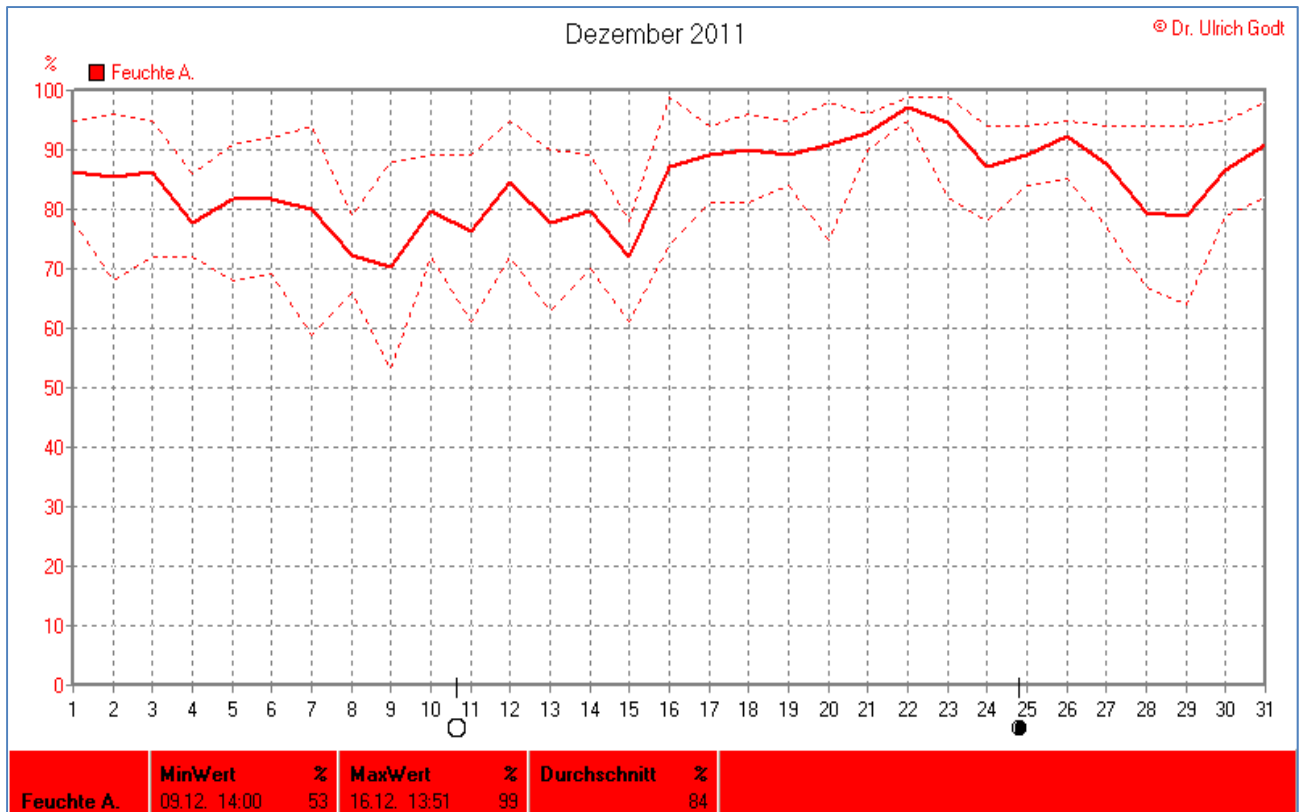
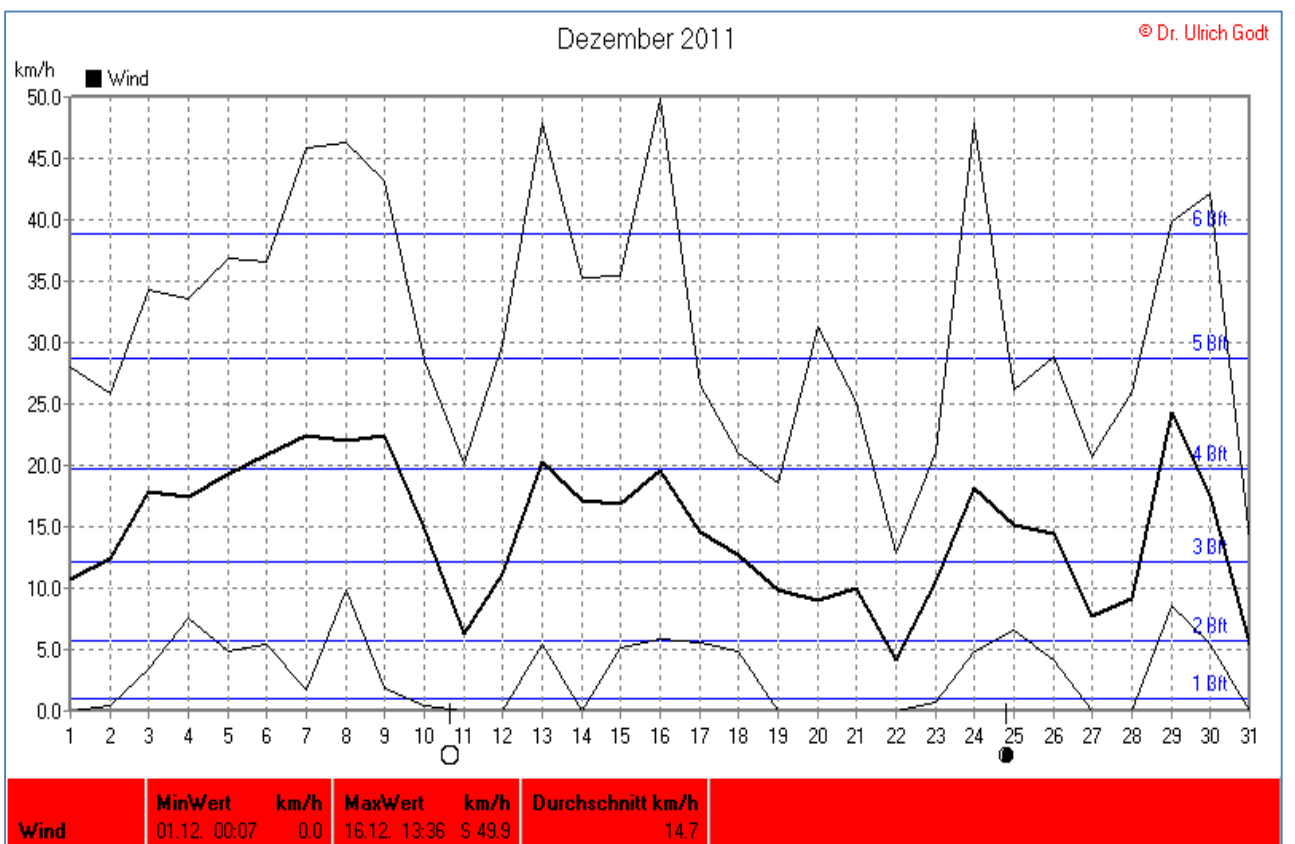
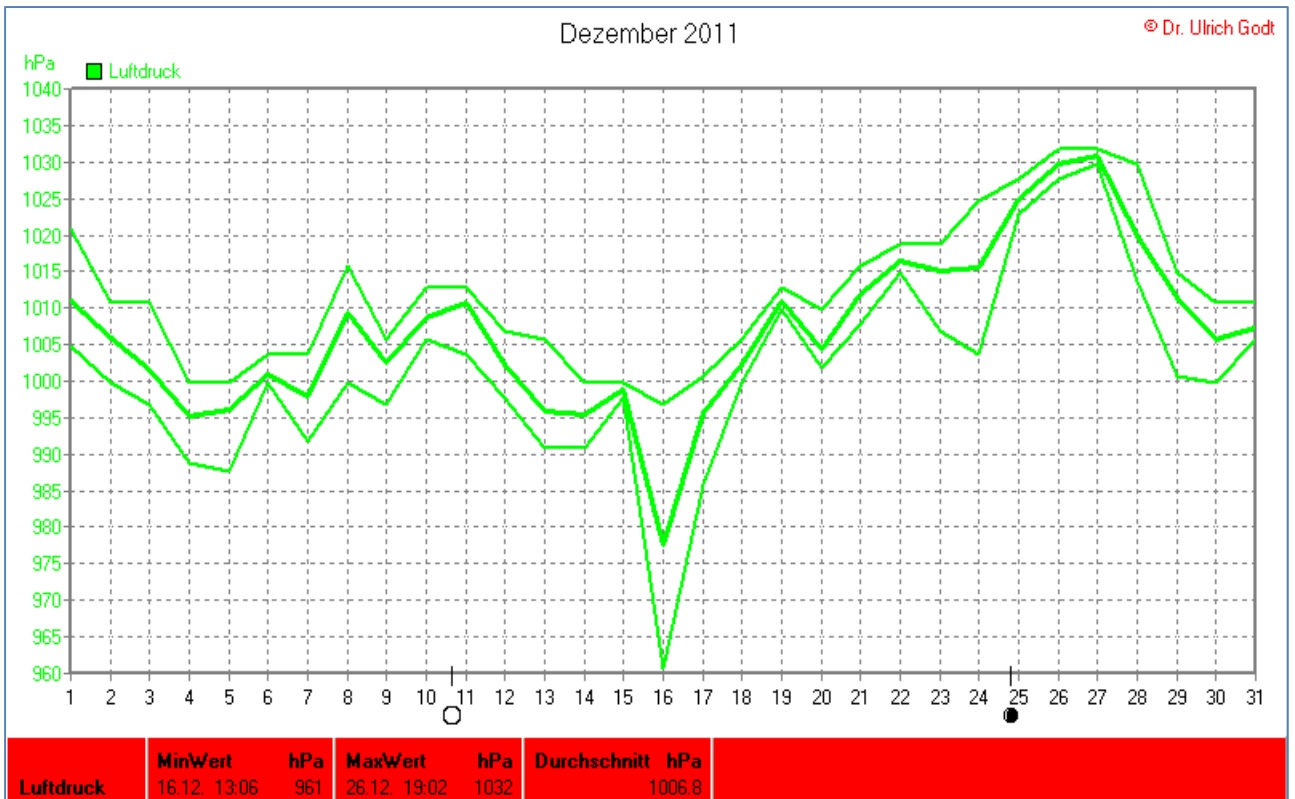


Wettertabelle und Grafiken Dezember 2011 Station Elsen

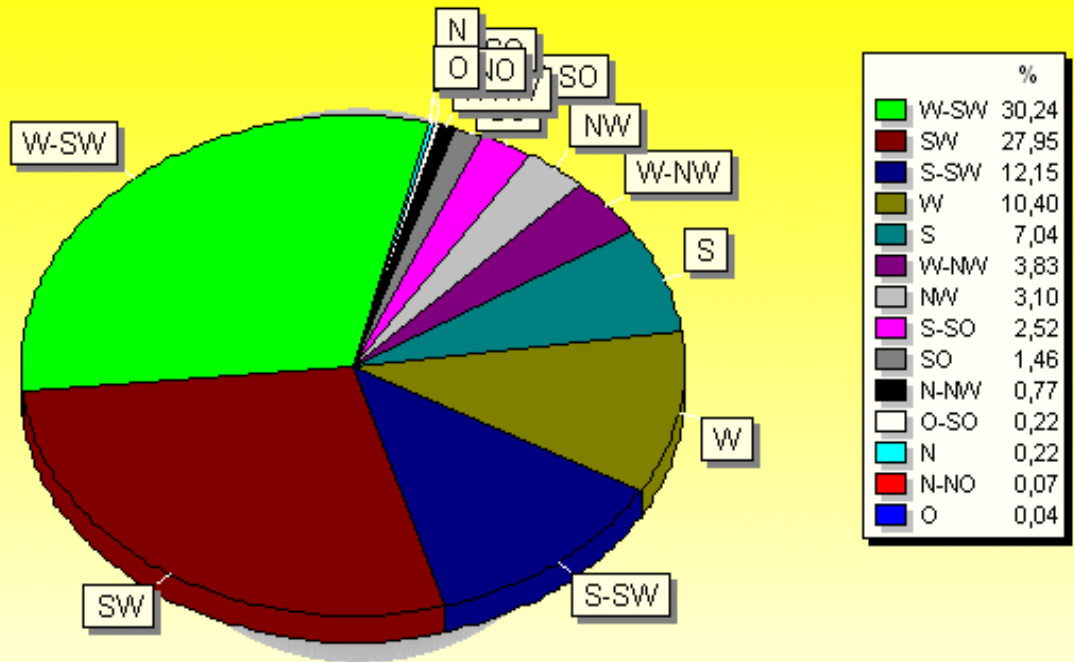
Wetterdaten Dezember 2011 Station Elsen							
Meßgröße	Minimum	Zeit	Datum	Maximum	Zeit	Datum	Durchschnitt
Lufttemperatur	-1,5 °C	06:30	11.12.2011	11,8 °C	05:37	02.12.2011	5,0 °C
Temperatur Boden	2,2 °C	08:00	11.12.2011	16,8 °C	13:02	28.12.2011	8,5 °C
Luftfeuchte	53%	14:00	09.12.2011	99%	13:51	16.12.2011	84%
Luftdruck	961 hPa	13:06	16.12.2011	1032 hPa	19:02	26.12.2011	1007 hPa
Wind km/h				49,9 km/h	13:36	16.12.2011	14,7 km/h
Wind °				S	13:36	16.12.2011	W-SW
Regen mm				10,3 l/m ²	00:06	17.12.2011	#123,120 l/m ²
Sonne h				5:15 h	14:02	28.12.2011	#27:15 h







Verteilung Windrichtung Dezember 2011

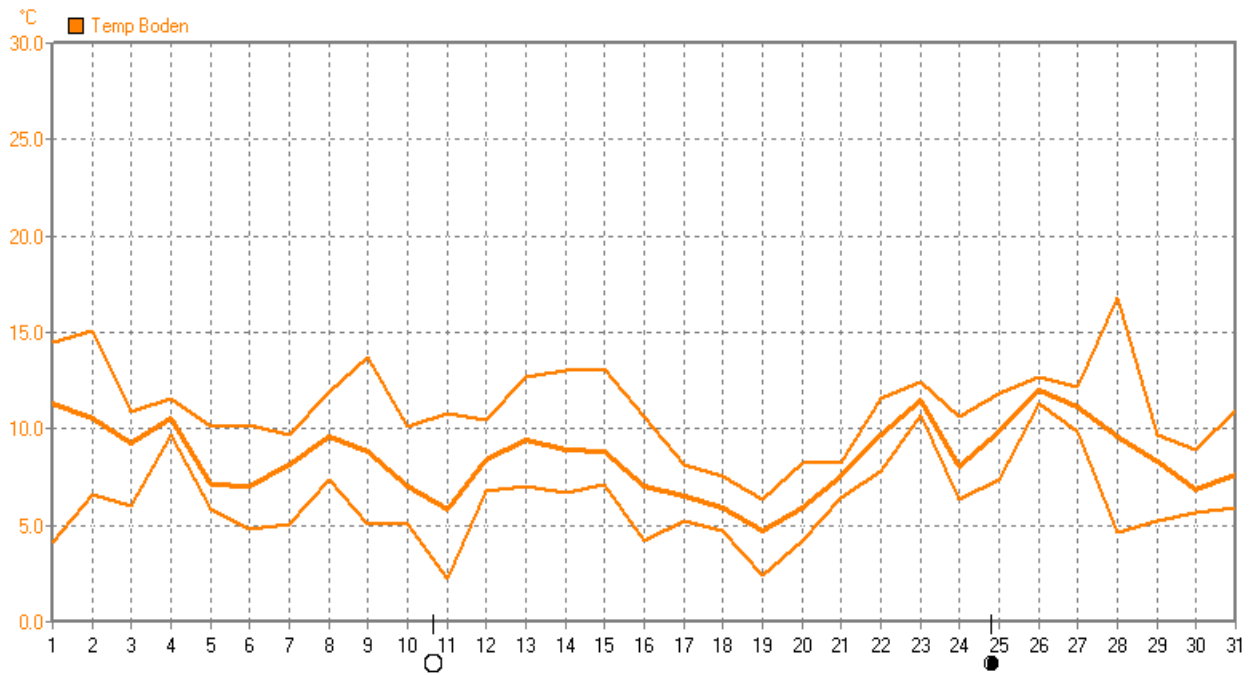


2741 / 176 Werte -> 6.0% Windstille - Ø 14,7km/h - Max. 49,9km/h

© WsWin32

Dezember 2011

© Dr. Ulrich Godt



Temp Boden	MinWert	°C	MaxWert	°C	Durchschnitt	°C
	11.12. 08:00	2,2	28.12. 13:02	16,8		8,49

Dezember 2011

© Dr. Ulrich Godt

