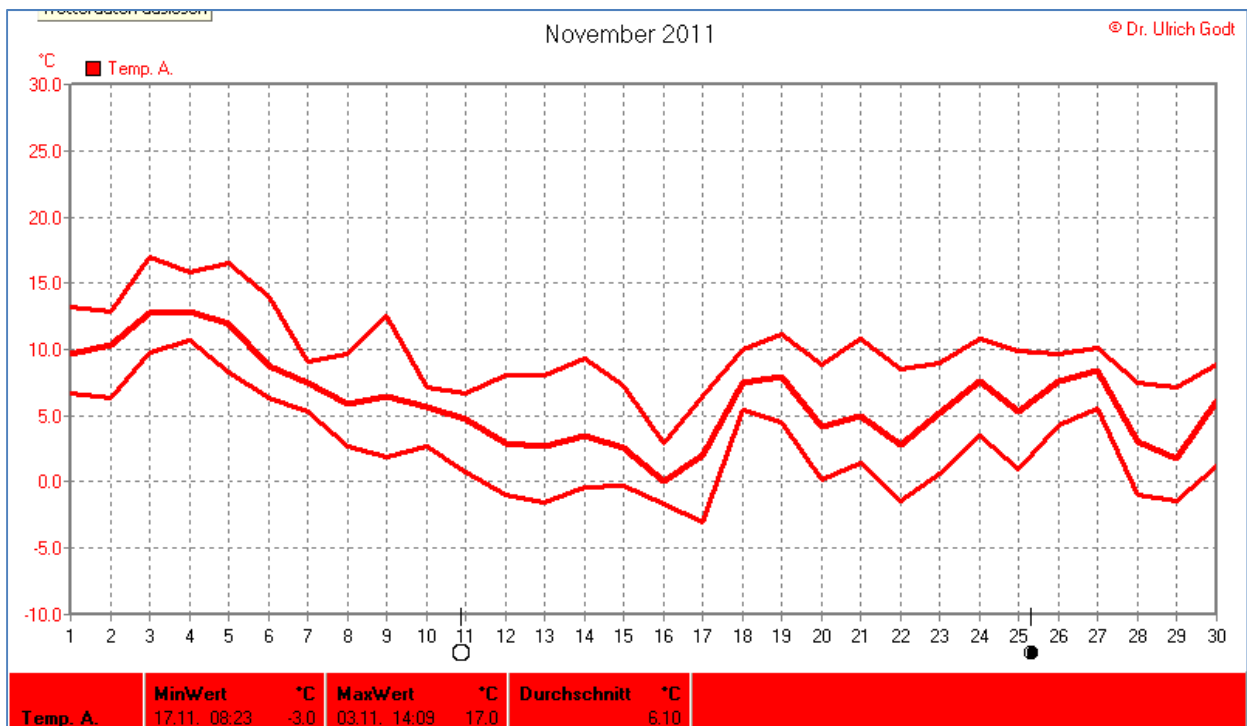
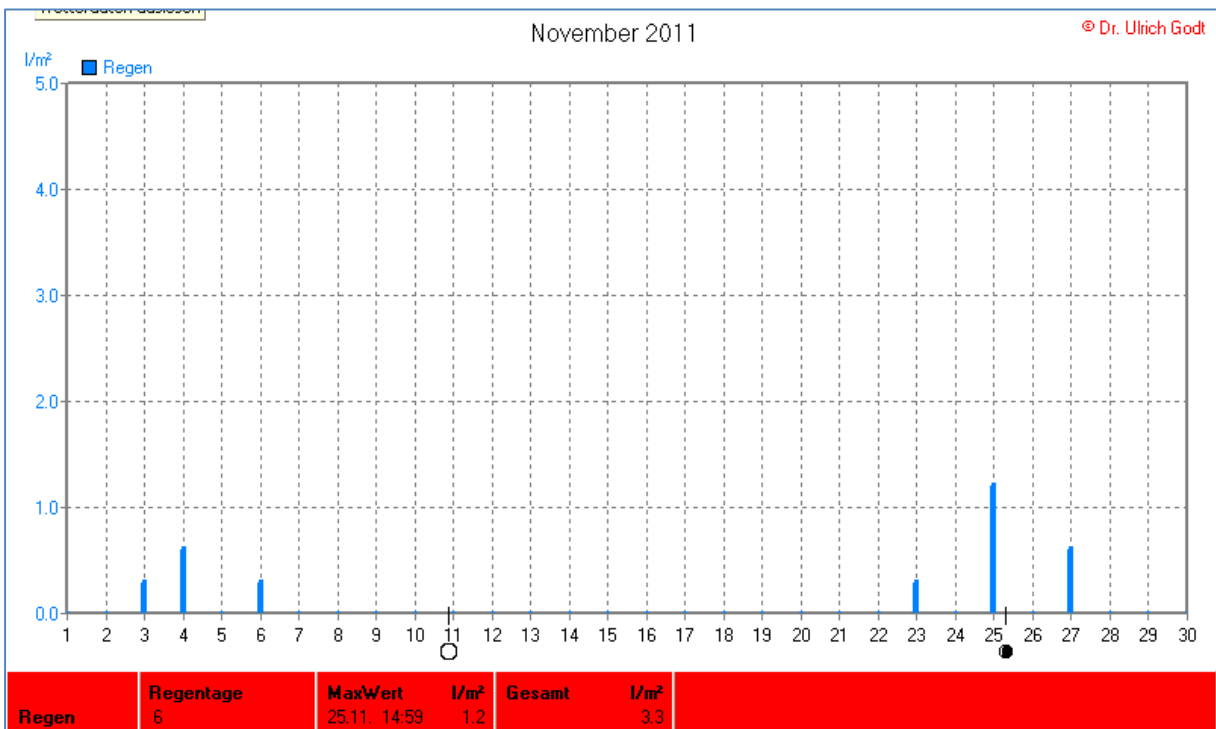
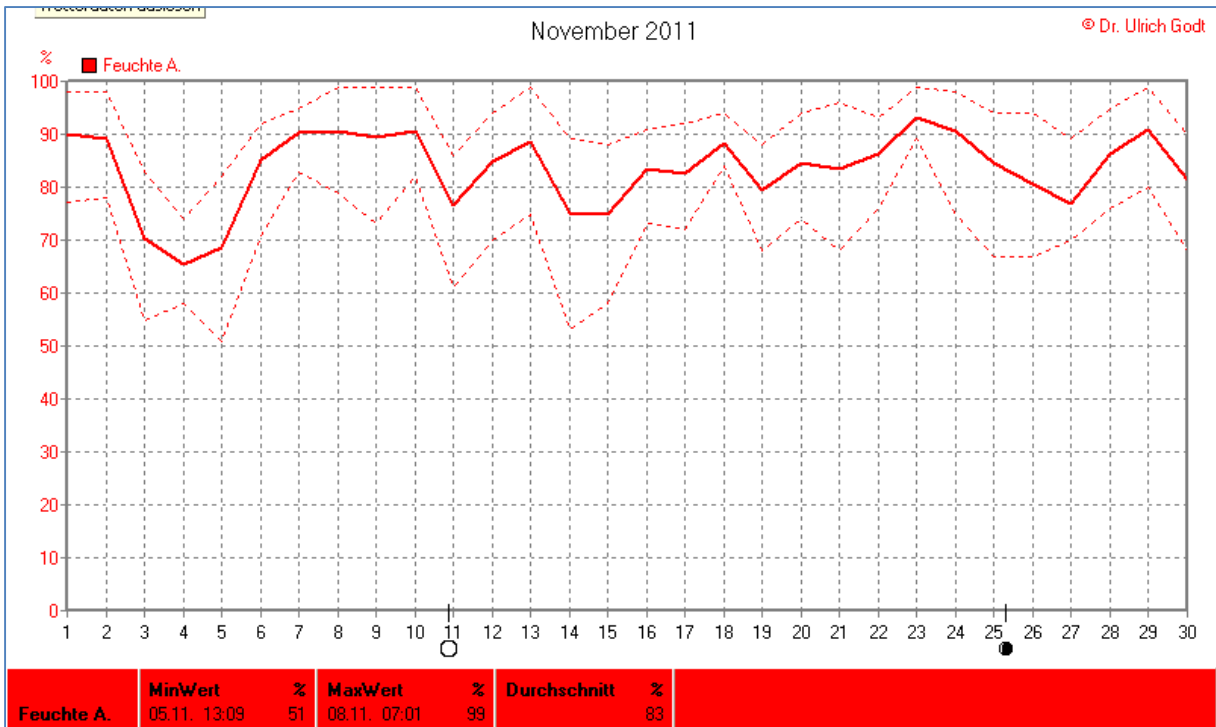
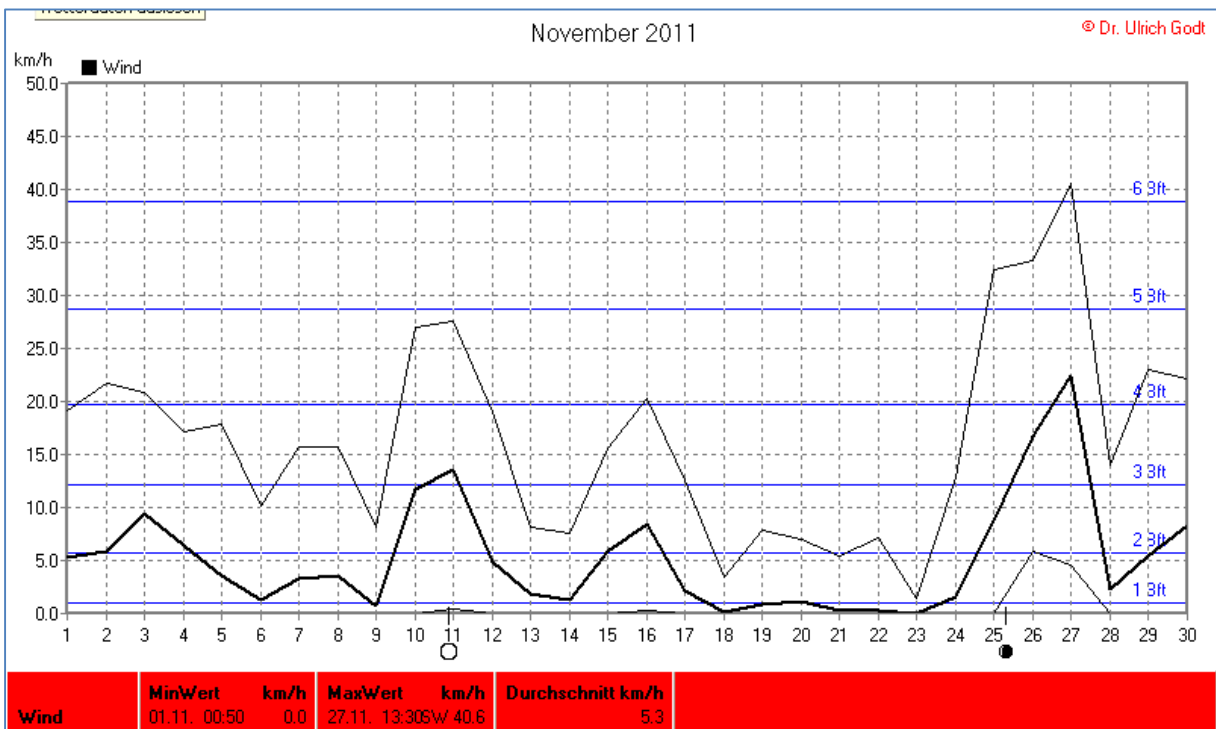
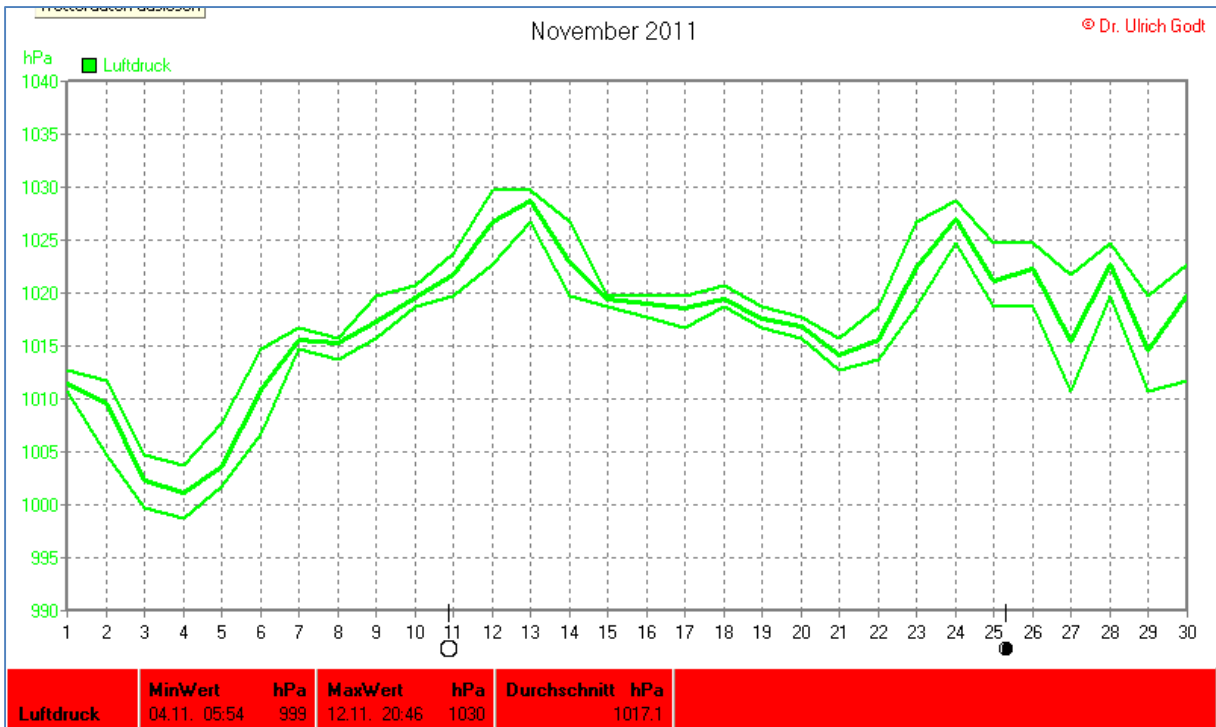


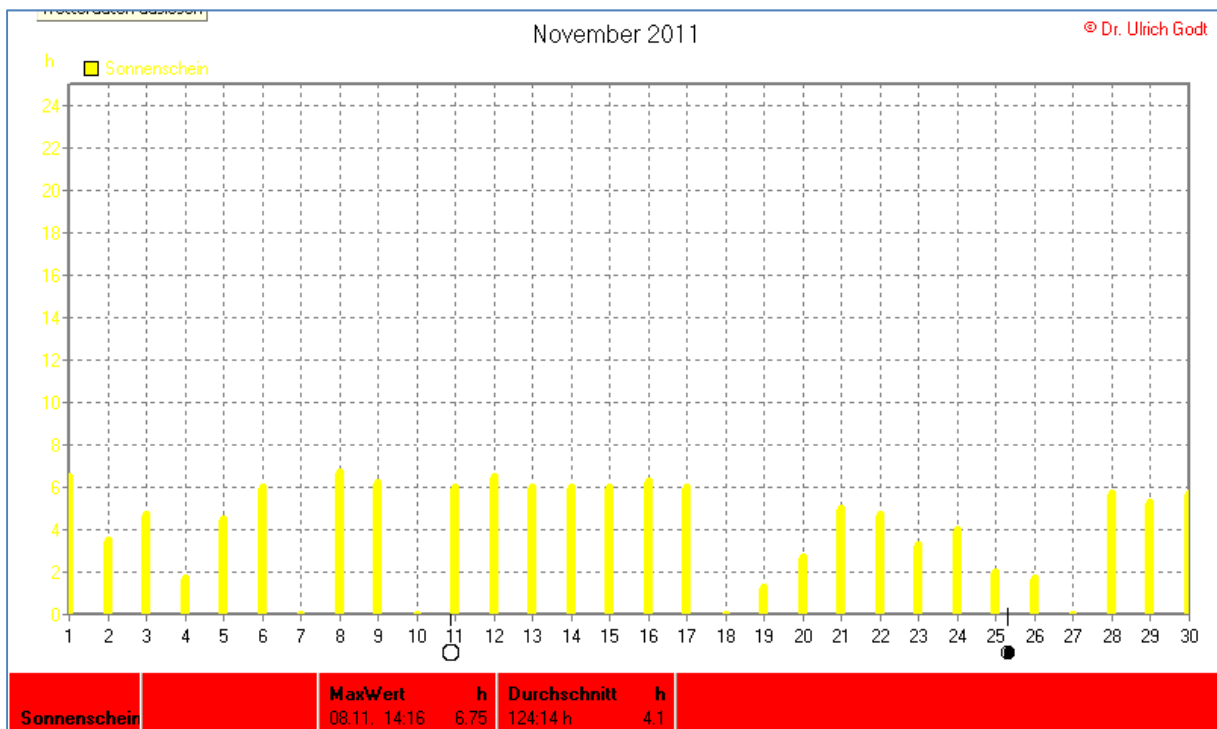
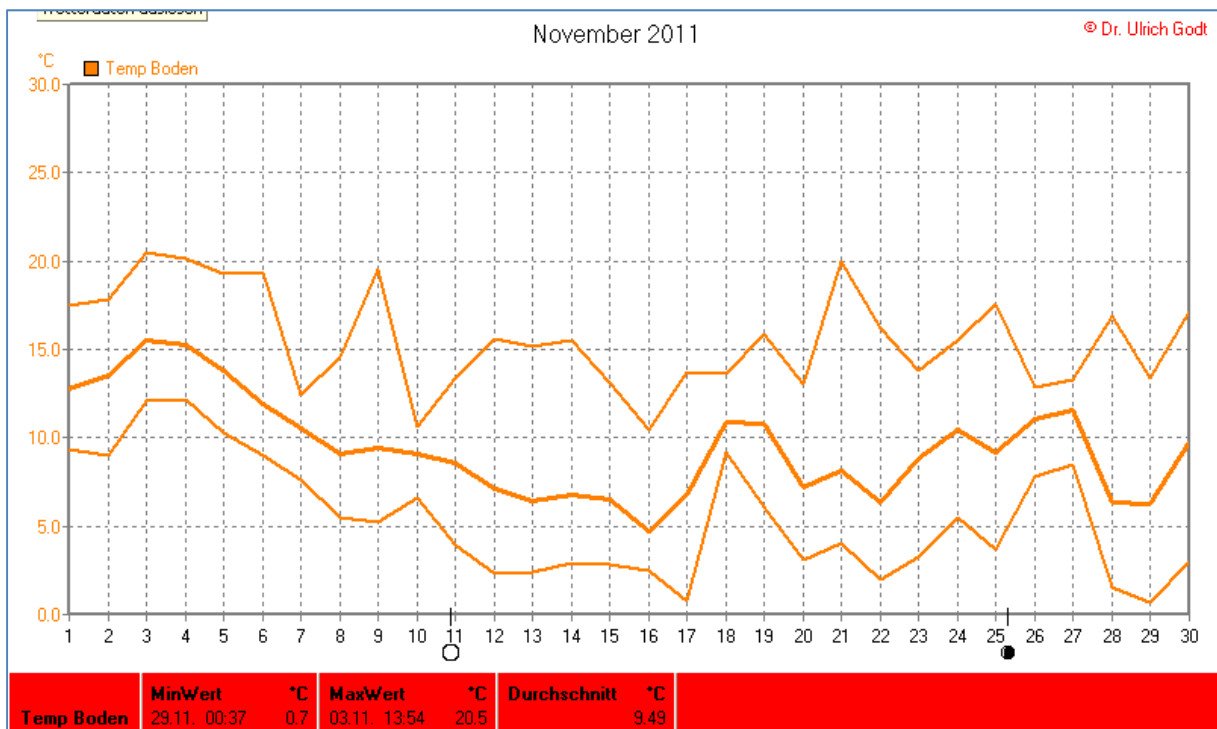
## Wettertabelle und Grafiken November 2011 Station Elsen

| Wetterdaten November 2011 Station Elsen |         |       |            |                      |       |            |                         |
|---|---------|-------|------------|----------------------|-------|------------|-------------------------|
| Meßgröße                                | Minimum | Zeit  | Datum      | Maximum              | Zeit  | Datum      | Durchschnitt            |
| Temperatur Außen                        | 20,5 °C | 06:01 | 11.11.2011 | 26,4 °C              | 22:46 | 11.11.2011 | 21,9 °C                 |
| Temperatur Boden                        | -3,0 °C | 08:23 | 17.11.2011 | 17,0 °C              | 14:09 | 03.11.2011 | 6,1 °C                  |
| Luftfeuchte                             | 51%     | 13:09 | 05.11.2011 | 99%                  | 07:01 | 08.11.2011 | 83%                     |
| Luftdruck                               | 999 hPa | 05:54 | 04.11.2011 | 1030 hPa             | 20:46 | 12.11.2011 | 1017 hPa                |
| Wind km/h                               |         |       |            | 40,6 km/h            | 13:30 | 27.11.2011 | 5,3 km/h                |
| Wind °                                  |         |       |            | SW                   | 13:30 | 27.11.2011 | SO                      |
| Regen mm                                |         |       |            | 1,2 l/m <sup>2</sup> | 14:59 | 25.11.2011 | #3,344 l/m <sup>2</sup> |
| Sonne h                                 |         |       |            | 6:45 h               | 14:16 | 08.11.2011 | #124:14 h               |

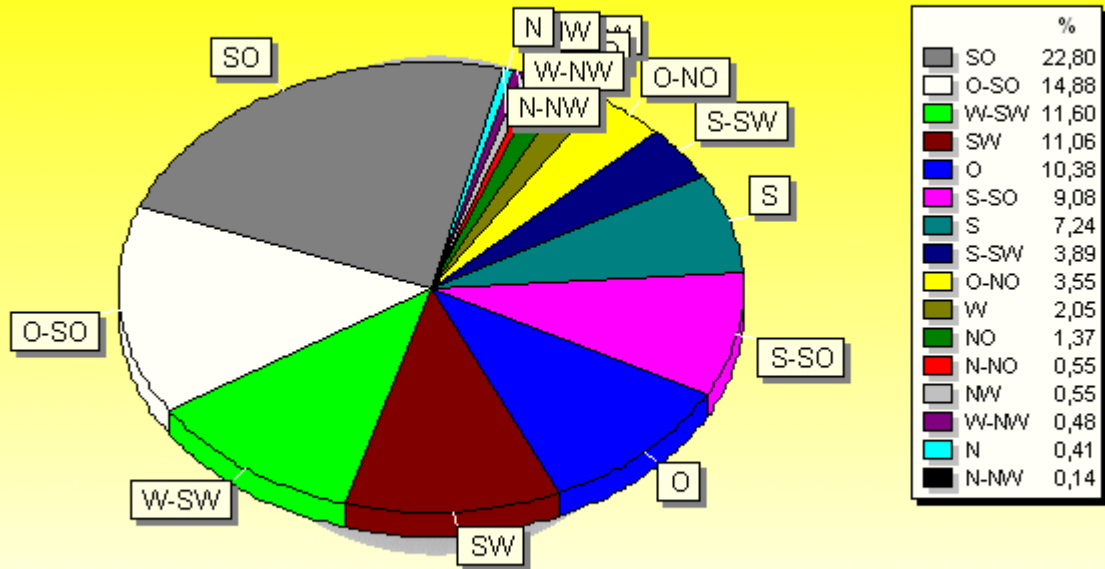








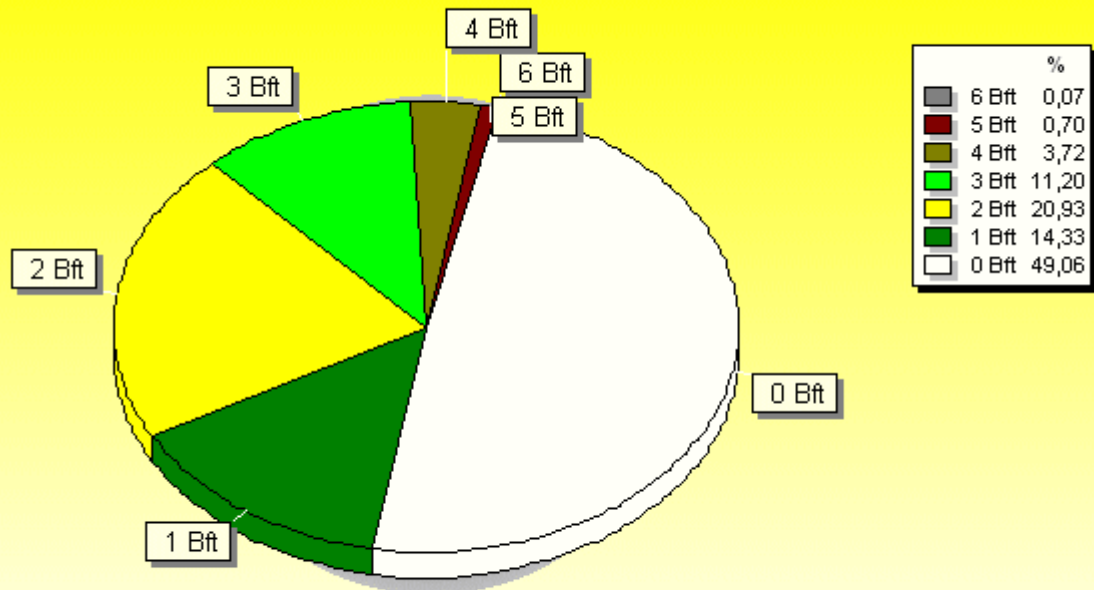
### Verteilung Windrichtung November 2011



1465 / 1411 Werte -> 49.1% Windstille - Ø 5,3km/h - Max. 40,6km/h

© WzWin32

### Verteilung Windstärke November 2011



2876 Werte - Ø 5,3km/h - Max. 40,6km/h

© WzWin32

