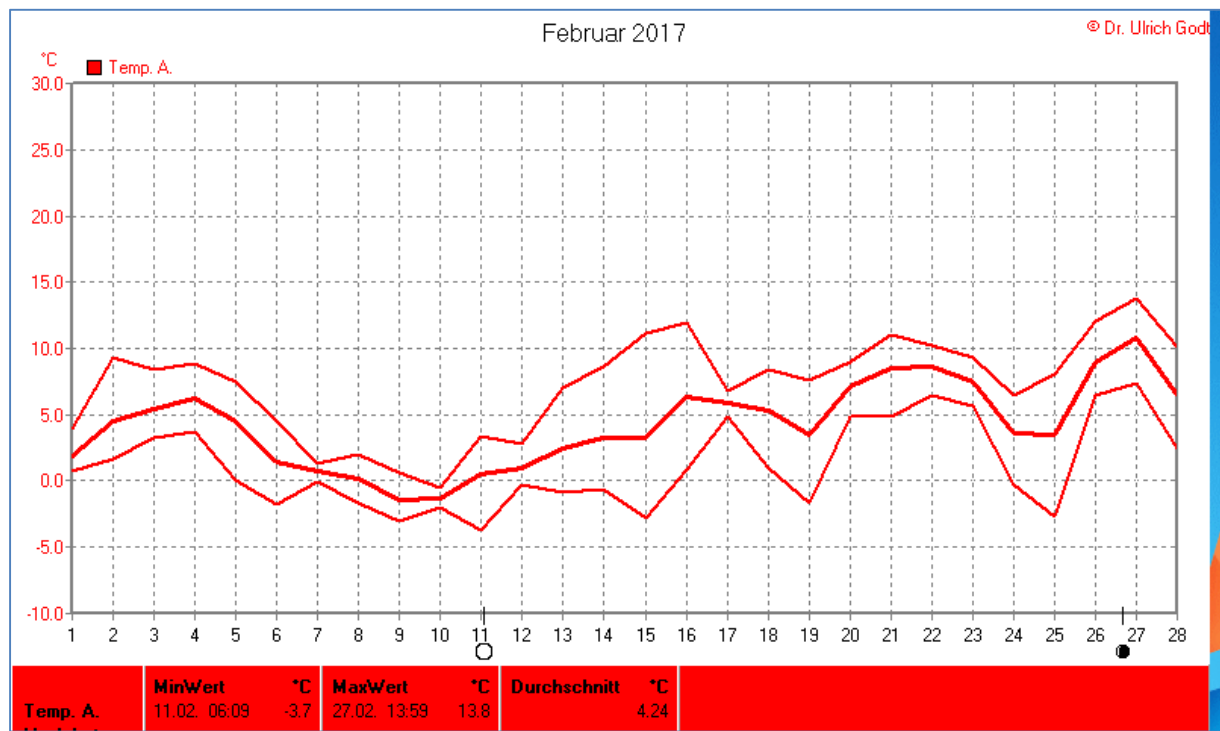
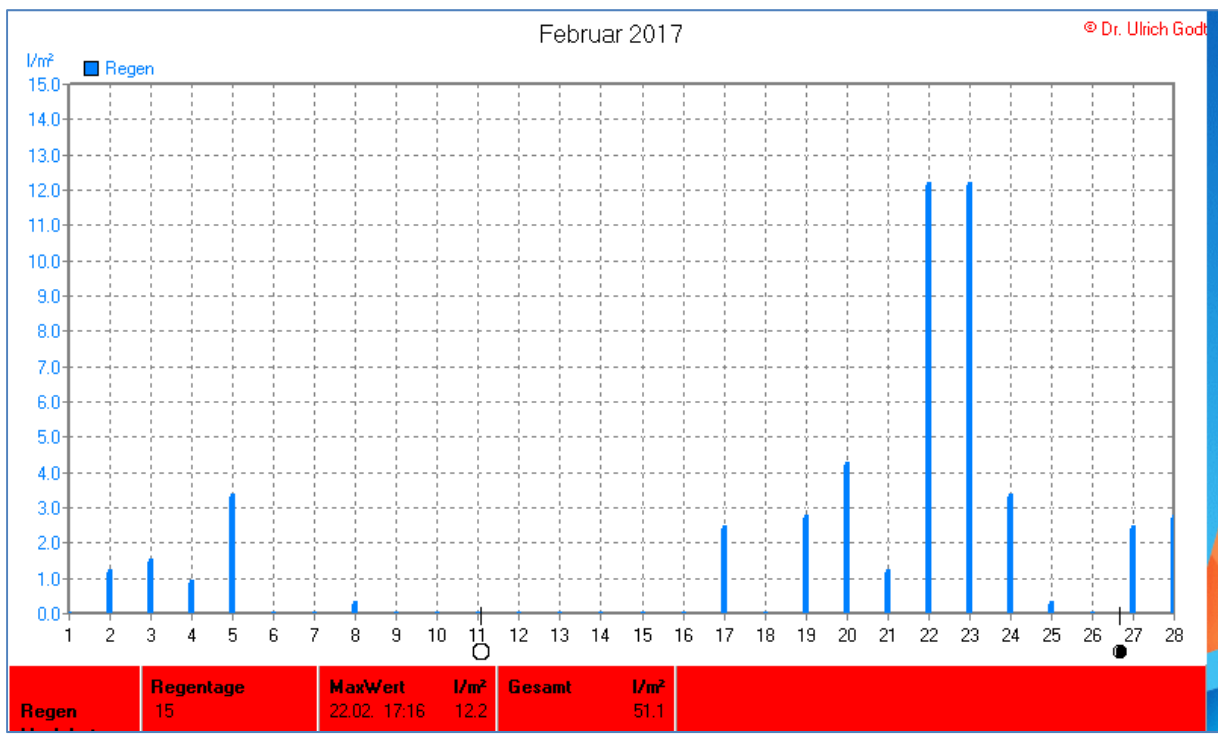
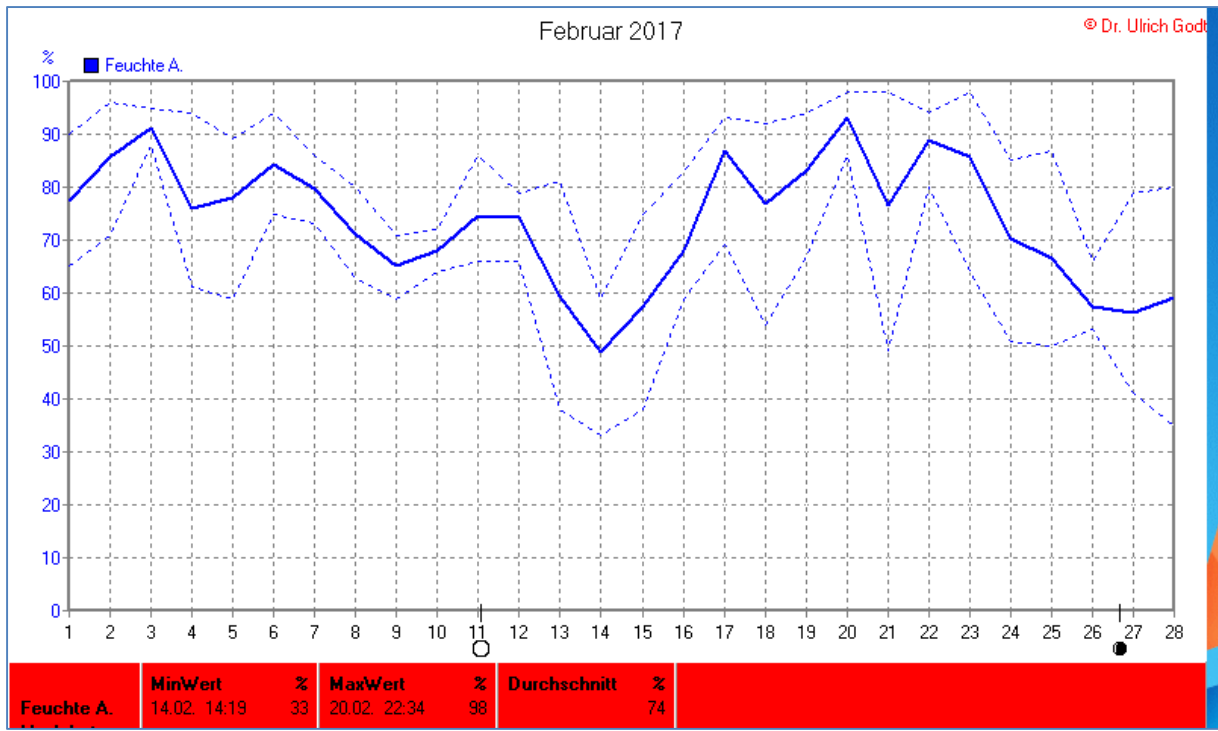
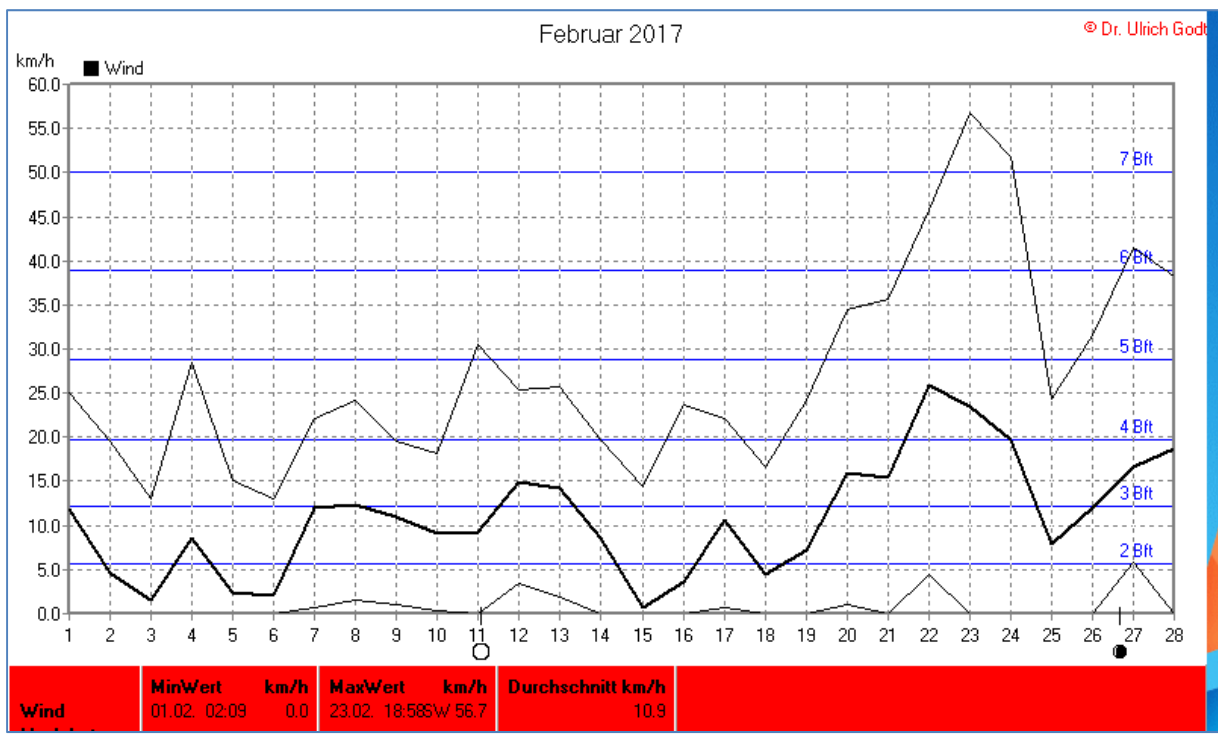
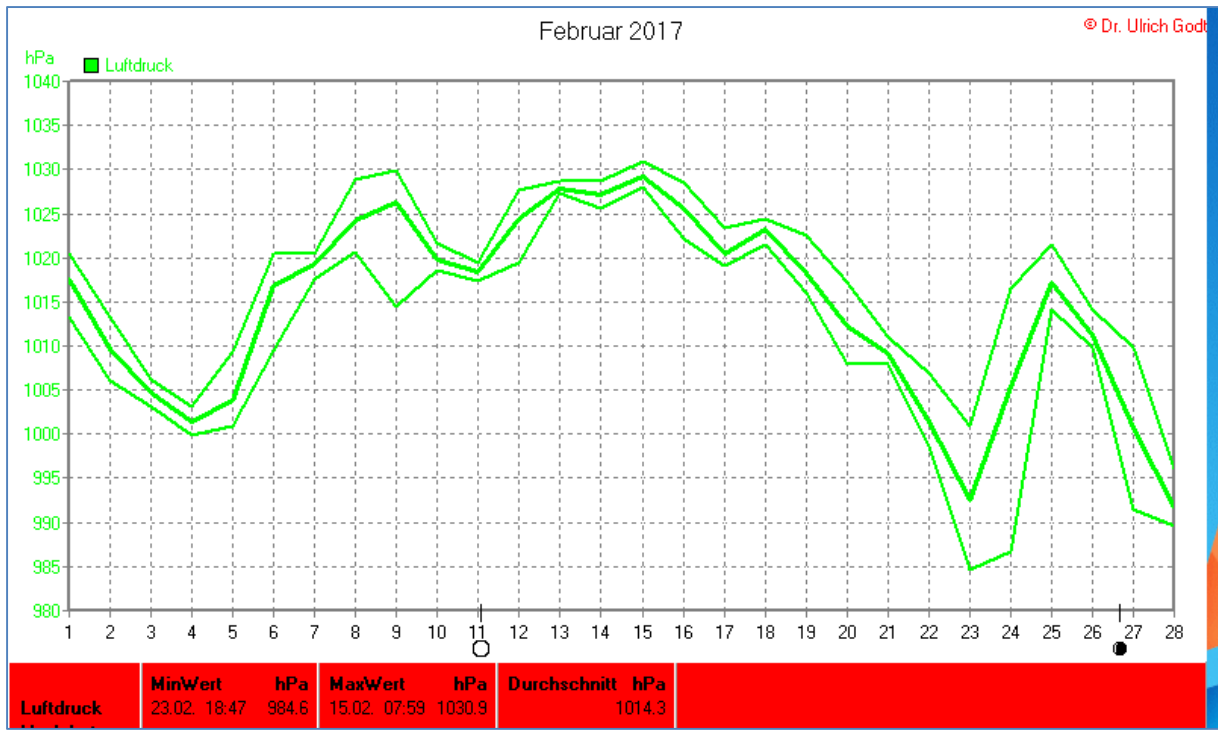


Wettertabelle und Grafiken Februar 2017 Station Elsen

Wetterdaten Februar 2017 Station Elsen							
© Dr. Ulrich Godt							
Meßgröße	Minimum	Zeit	Datum	Maximum	Zeit	Datum	Durchschnitt
Temperatur	-3,7 °C	06:09	11.02.2017	13,8 °C	13:59	27.02.2017	4,2 °C
Bodentemp.	-0,6 °C	07:30	15.02.2017	12,8 °C	16:00	15.02.2017	5,0 °C
Luftfeuchte	33 %	14:19	14.02.2017	98 %	22:34	20.02.2017	74 %
Luftdruck	984,6 hPa	18:47	23.02.2017	1030,9 hPa	07:59	15.02.2017	1014,3 hPa
Wind km/h				56,7 km/h	18:58	23.02.2017	10,9 km/h
Wind °				W-SW	18:58	23.02.2017	W-SW
Regen l/m ²				12,2 l/m ²	17:16	22.02.2017	#51,072 l/m ²
Sonne h				7:31 h	17:20	14.02.2017	#64:41 h

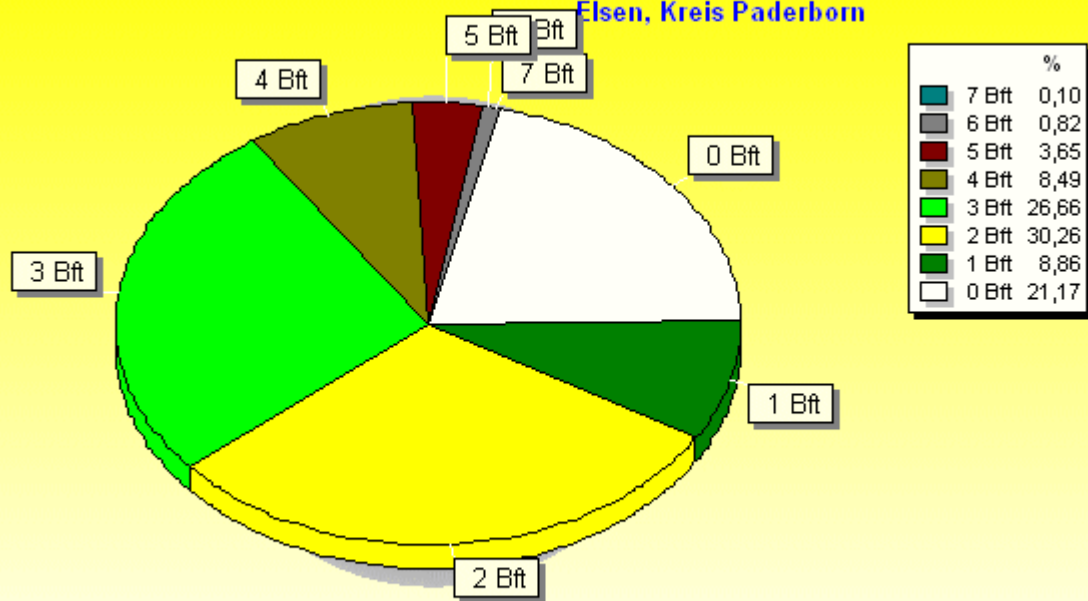






Verteilung Windstärke Februar 2017

Elsen, Kreis Paderborn

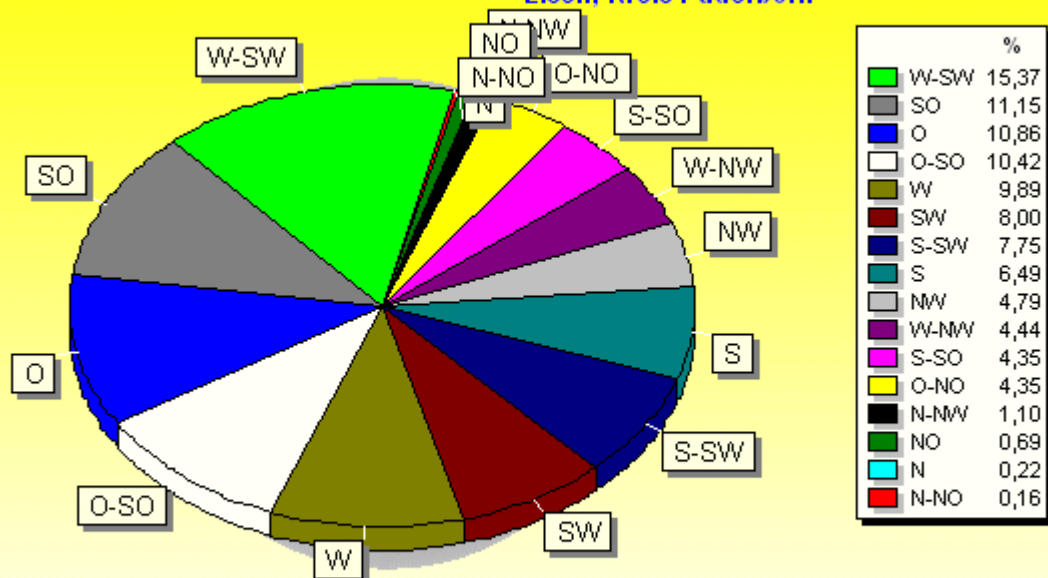


4029 Werte - Ø 10,9km/h - Max. 56,7km/h

© WzWin32 - © Dr. Ulrich Godt - Elsen, Kreis Paderborn

Verteilung Windrichtung Februar 2017

Elsen, Kreis Paderborn



3176 / 853 Werte -> 21.2% Windstille - Ø 10,9km/h - Max. 56,7km/h

© WzWin32 - © Dr. Ulrich Godt - Elsen, Kreis Paderborn

