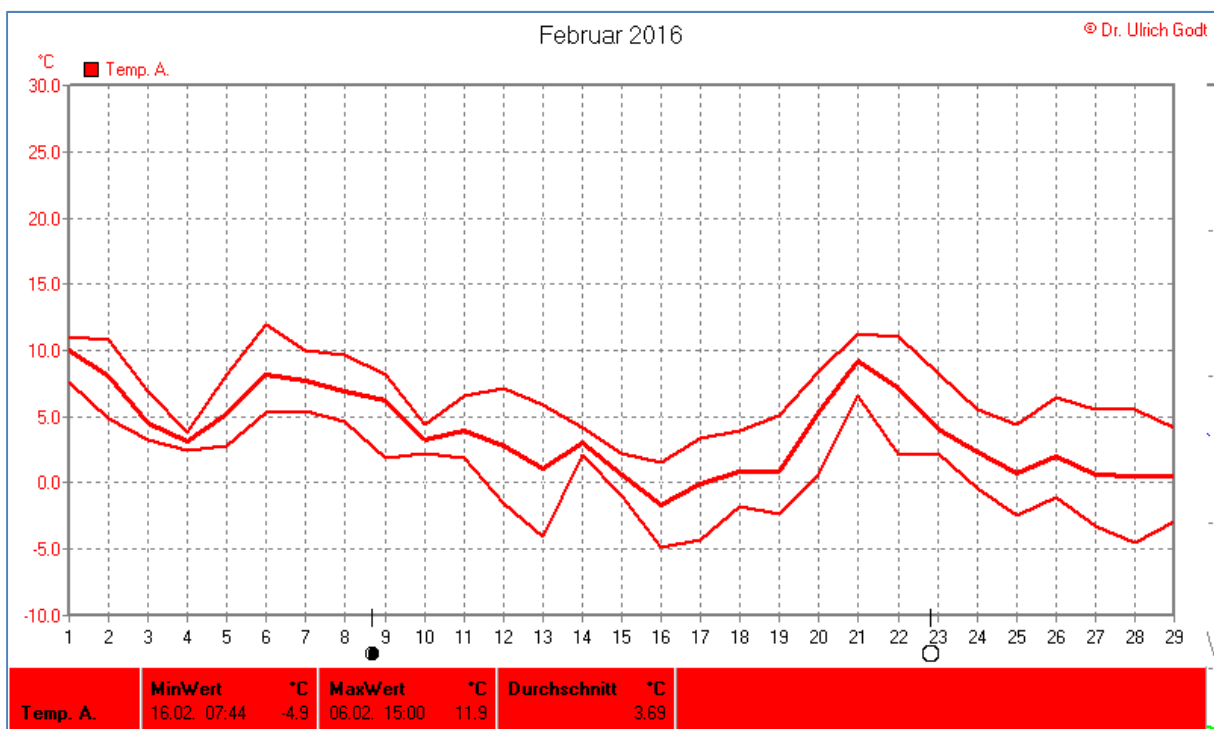
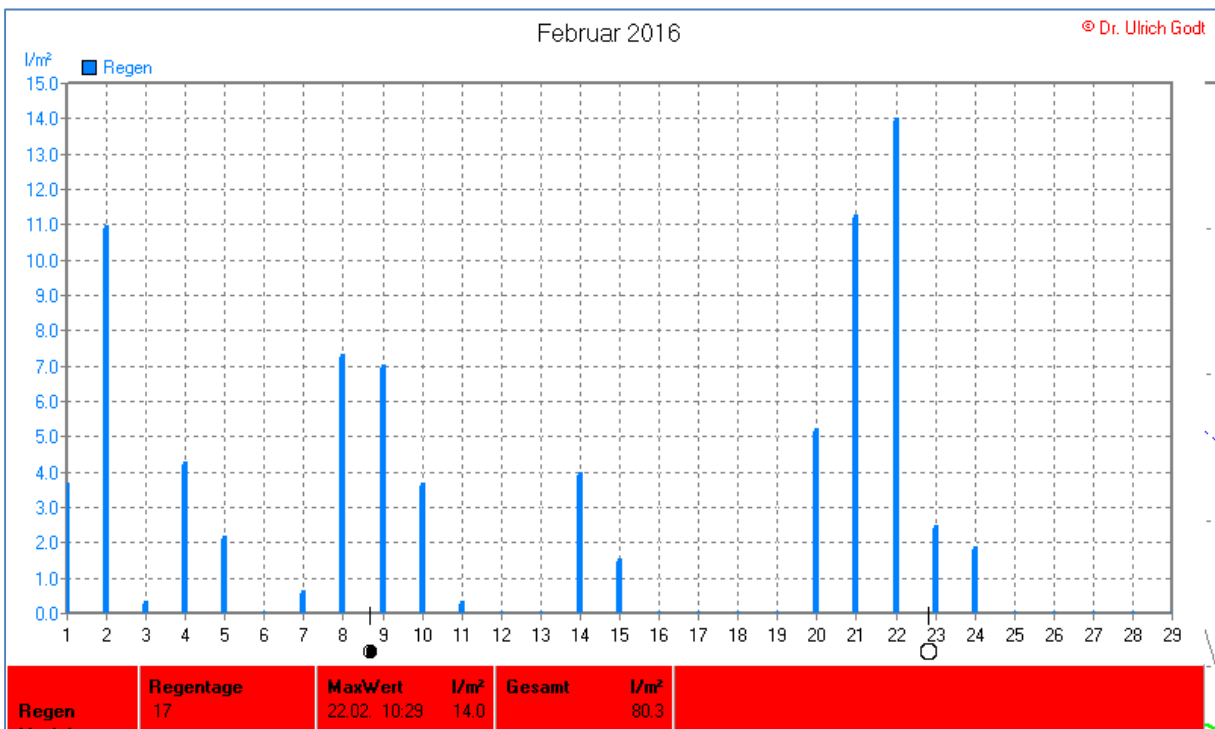
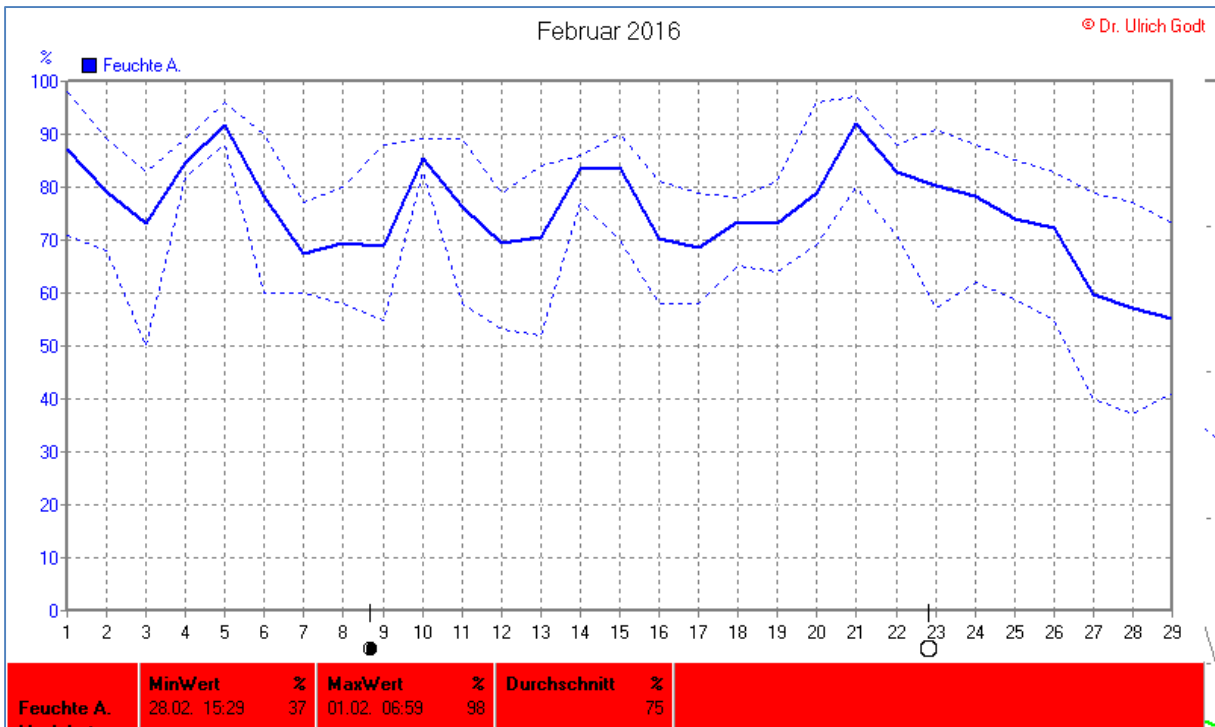
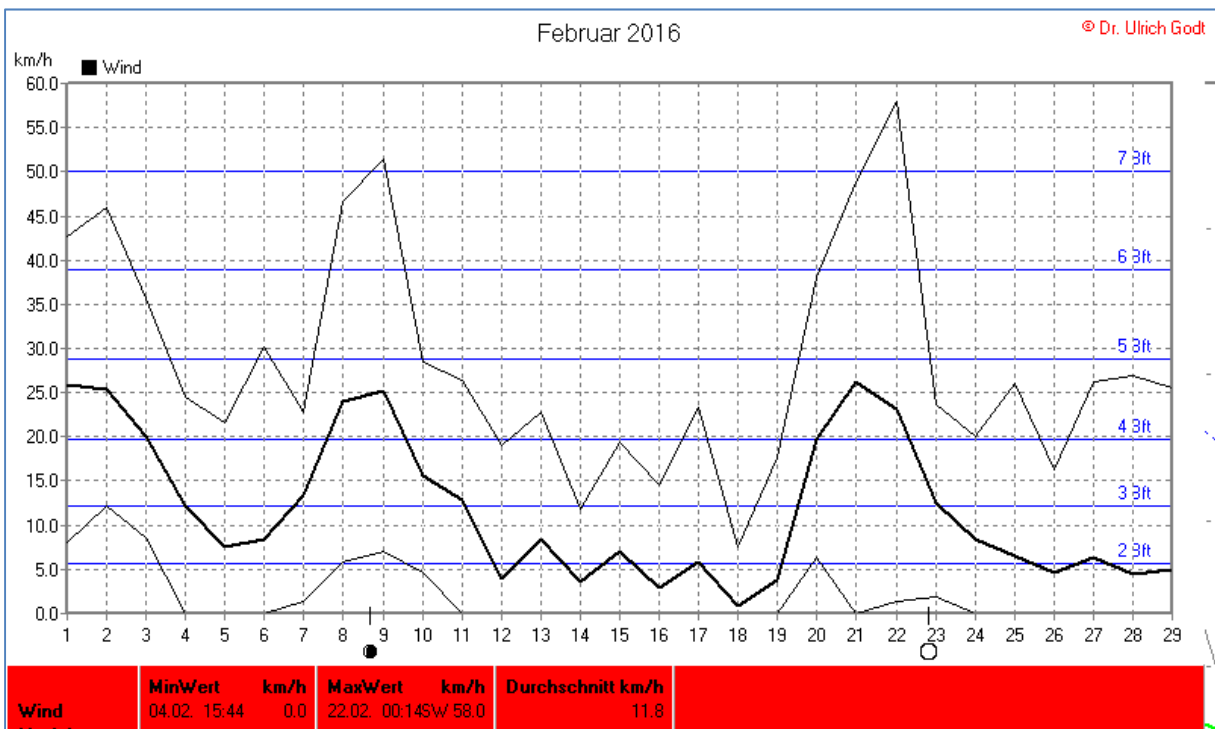
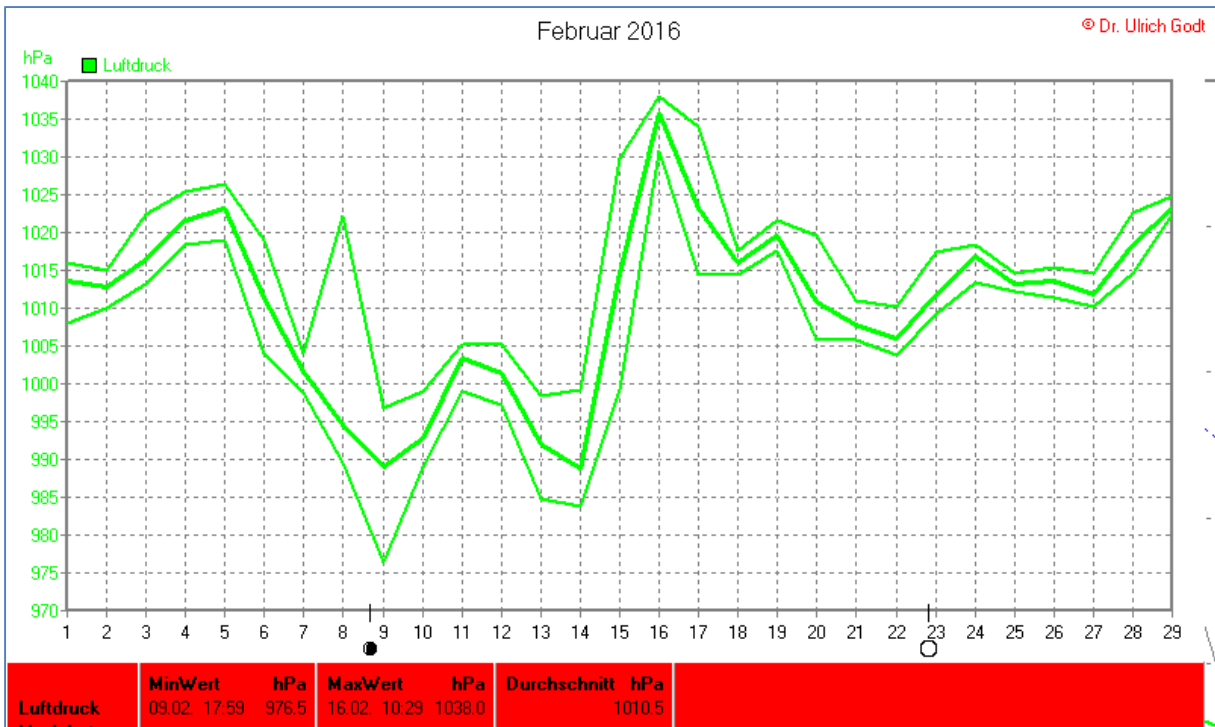


Wettertabelle und Grafiken Februar 2016 Station Elsen

Wetterdaten Februar 2016 Station Elsen							
© Dr. Ulrich Godt							
Meßgröße	Minimum	Zeit	Datum	Maximum	Zeit	Datum	Durchschnitt
Temperatur	-4,9 °C	07:44	16.02.2016	11,9 °C	15:00	06.02.2016	3,7 °C
Bodentemp	-1,5 °C	07:14	13.02.2016	11,4 °C	14:14	06.02.2016	4,5 °C
Luftfeuchte	37 %	15:29	28.02.2016	98 %	06:59	01.02.2016	75 %
Luftdruck	976,5 hPa	17:59	09.02.2016	1038,0 hPa	10:29	16.02.2016	1010,5 hPa
Wind km/h				58,0 km/h	00:14	22.02.2016	11,8 km/h
Wind °				W-SW	00:14	22.02.2016	W-SW
Regen l/m ²				14,0 l/m ²	10:29	22.02.2016	#80,256 l/m ²
Sonne h				8:31 h	17:44	27.02.2016	#74:56 h

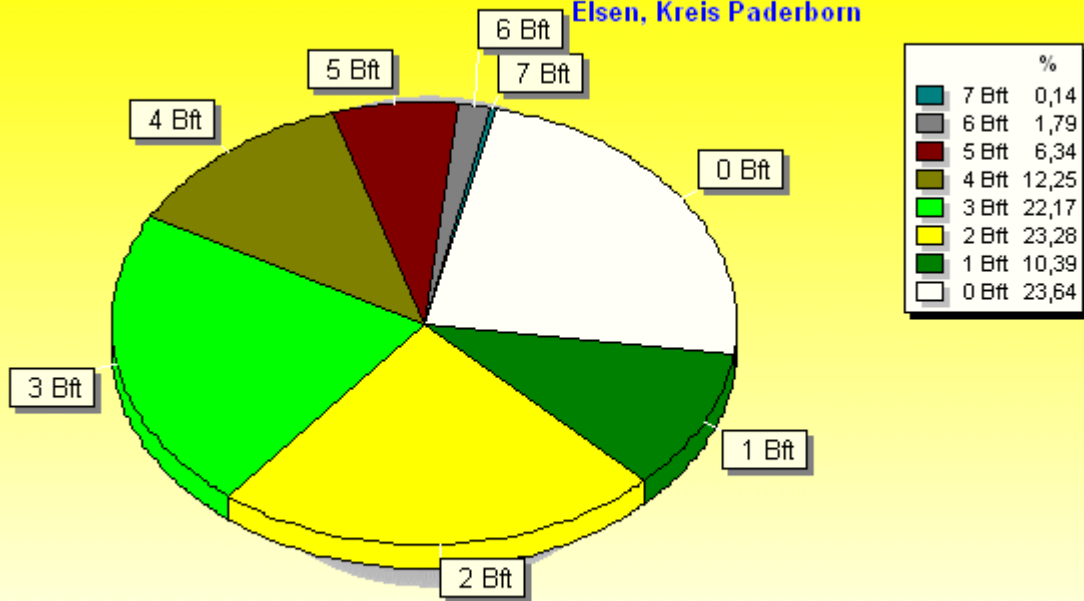






Verteilung Windstärke Februar 2016

Elsen, Kreis Paderborn

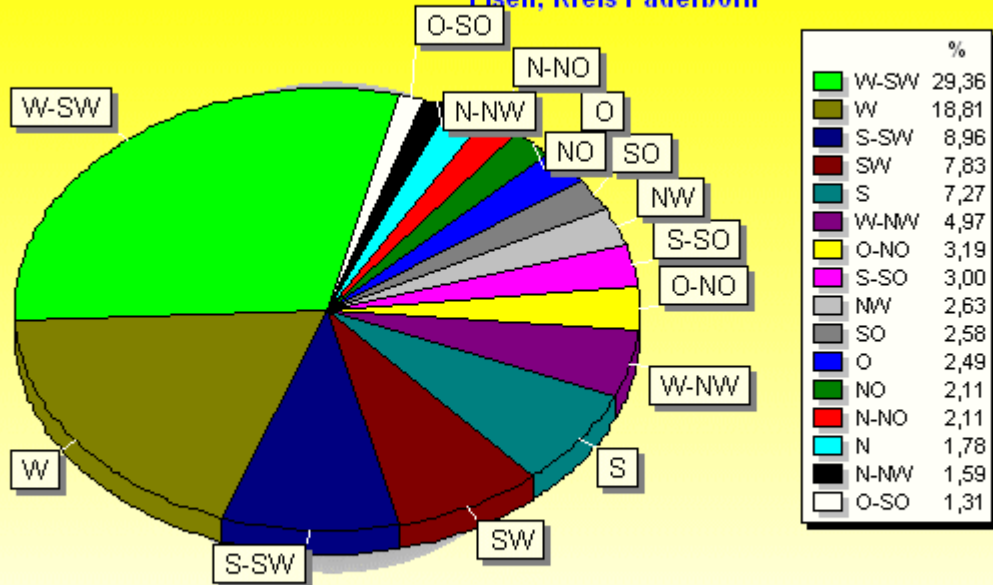


2792 Werte - Ø 11,8km/h - Max. 58,0km/h

© WzWin32 - © Dr. Ulrich Godt - Elsen, Kreis Paderborn

Verteilung Windrichtung Februar 2016

Elsen, Kreis Paderborn



2132 / 660 Werte -> 23,6% Windstille - Ø 11,8km/h - Max. 58,0km/h

© WzWin32 - © Dr. Ulrich Godt - Elsen, Kreis Paderborn

