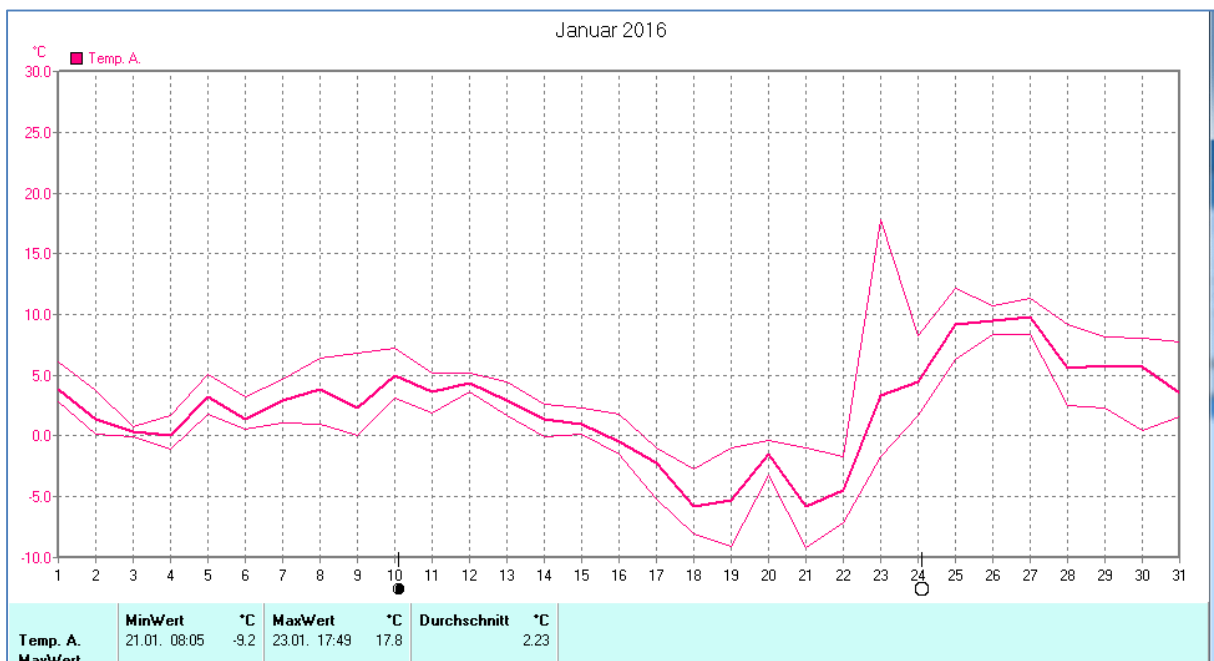
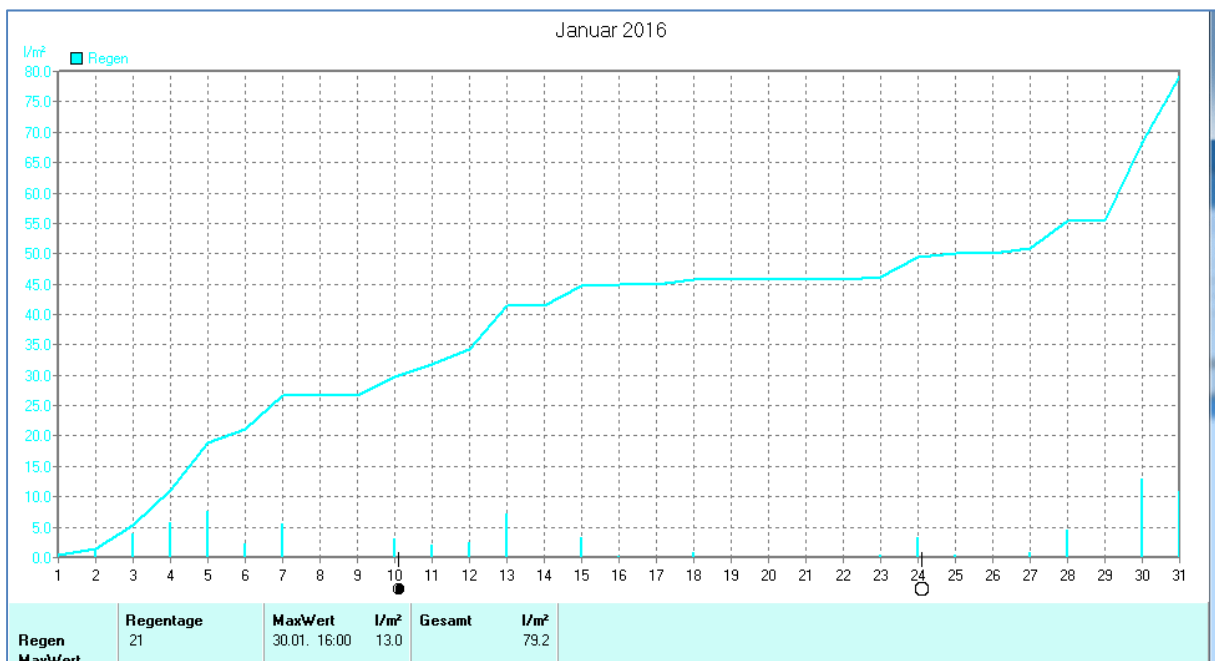
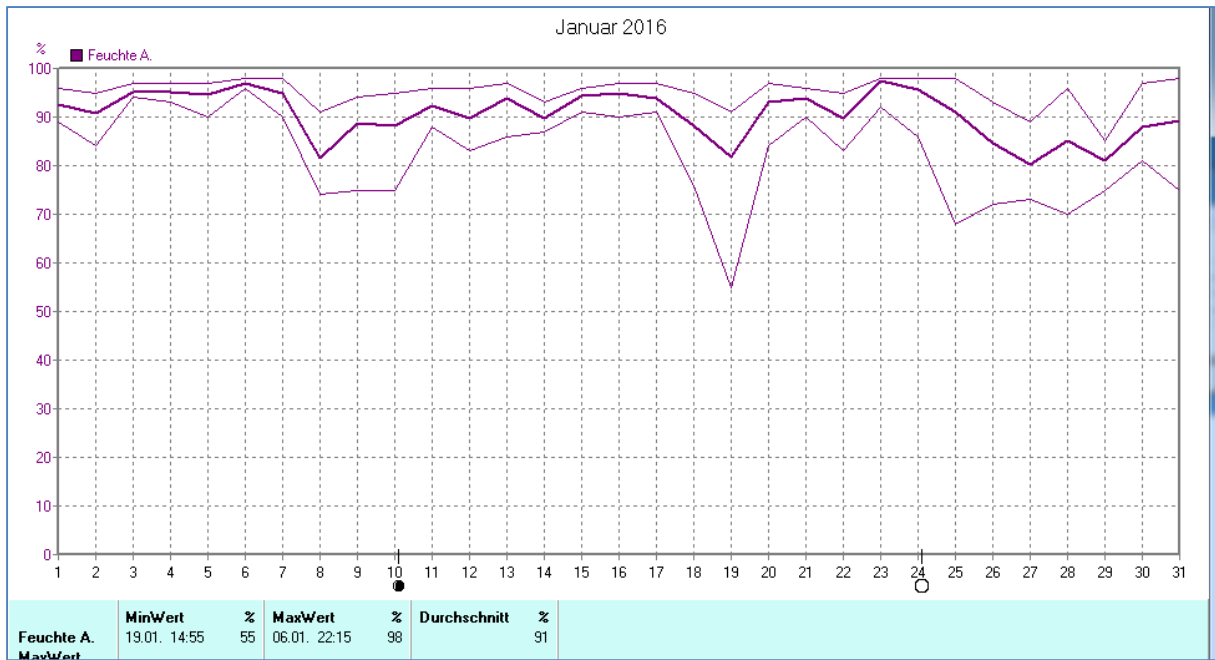
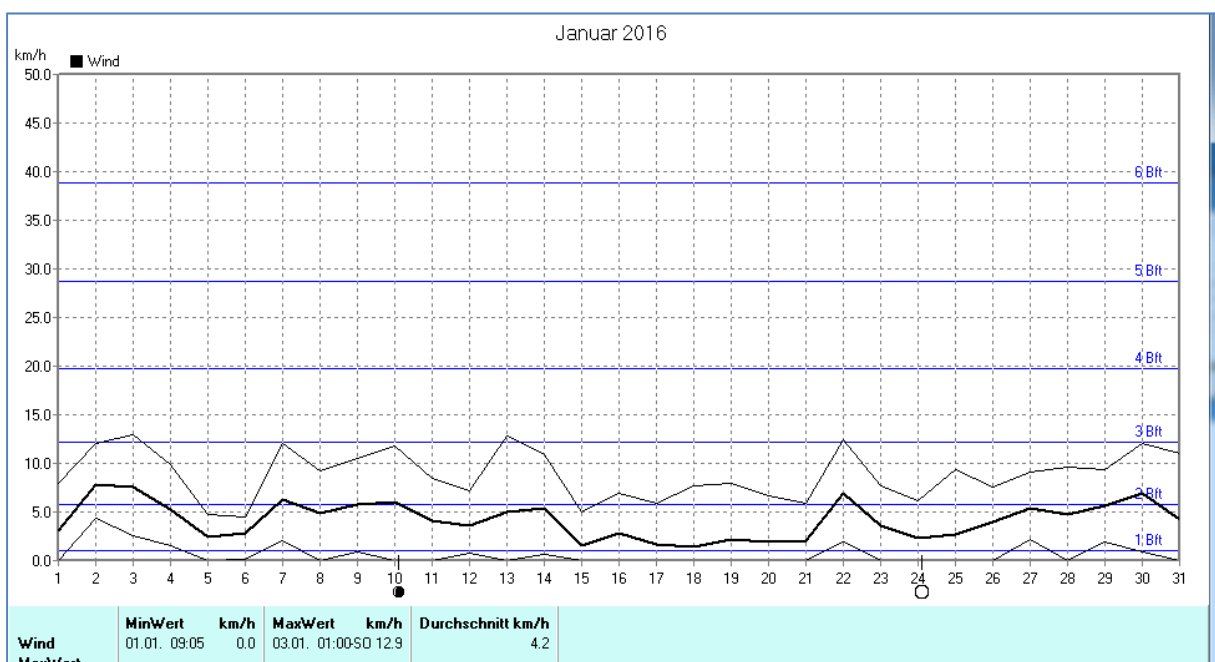
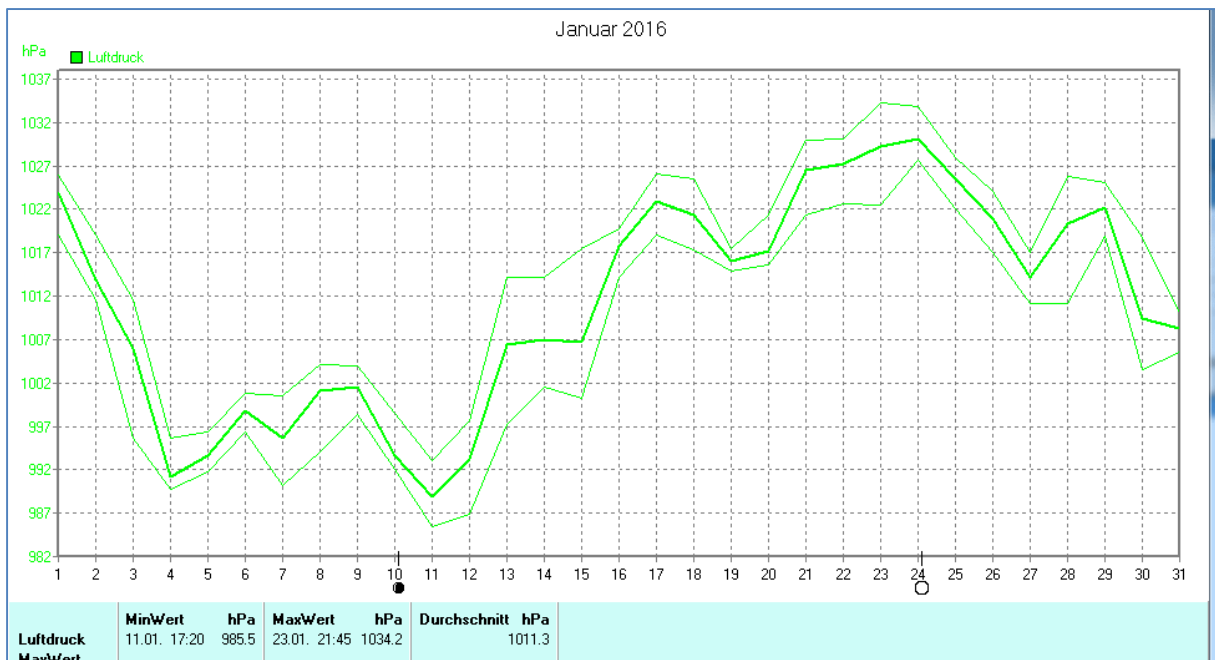


## Wettertabelle und Grafiken Januar 2016 Station Dörenhagen

Wetterdaten Januar 2016 Station Dörenhagen							
Meßgröße	Minimum	Zeit	Datum	Maximum	Zeit	Datum	Durchschnitt
Temperatur	-9,2 °C	08:05	21.01.2016	17,8 °C	17:49	23.01.2016	2,2 °C
Luftfeuchte	55 %	14:55	19.01.2016	98 %	22:15	06.01.2016	91 %
Luftdruck	985,5 hPa	17:20	11.01.2016	1034,2 hPa	21:45	23.01.2016	1011,3 hPa
Wind km/h				12,9 km/h	01:00	03.01.2016	4,2 km/h
Wind °				S-SO	01:00	03.01.2016	S-SO
Regen l/m <sup>2</sup>				13,0 l/m <sup>2</sup>	16:00	30.01.2016	#79,248 l/m <sup>2</sup>
Solar				439 W/m <sup>2</sup>	11:50	28.01.2016	56 W/m <sup>2</sup>
Sonne h				4:40 h	14:45	19.01.2016	#33:15 h

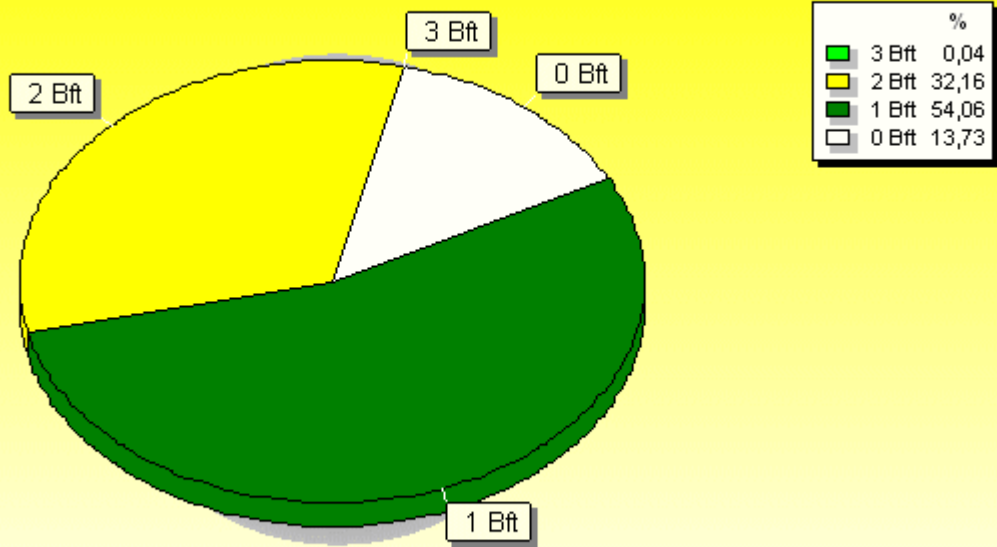






### Verteilung Windstärke Januar 2016

#### Borchen-Dörenhagen

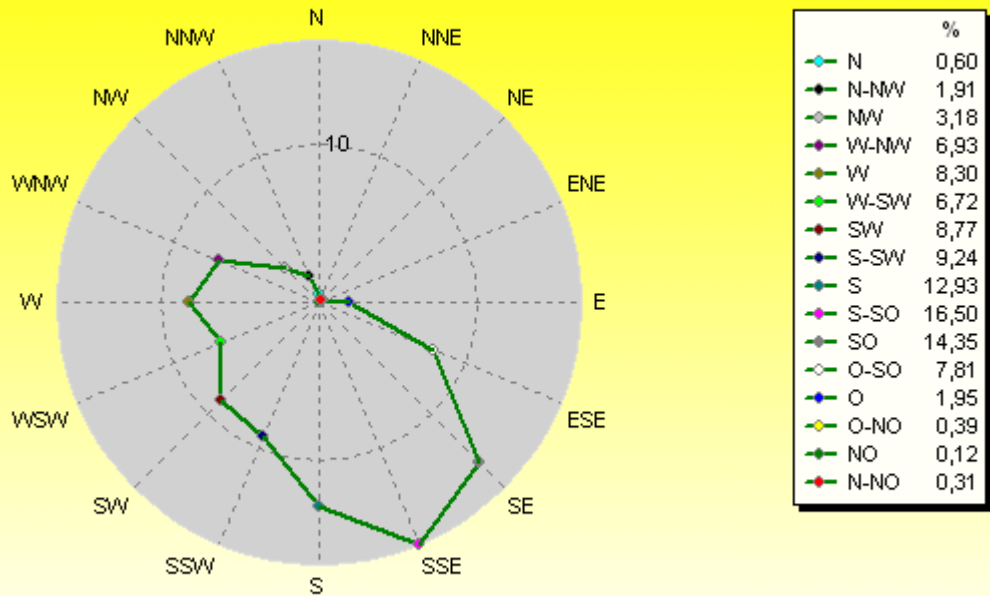


8921 Werte - Ø 4,2km/h - Max. 12,9km/h

© WzWin32

### Verteilung Windrichtung Januar 2016

#### Borchen-Dörenhagen



7696 / 1225 Werte -> 13.7% Windstille - Ø 4,2km/h - Max. 35,4km/h = Windböen

© WzWin32

