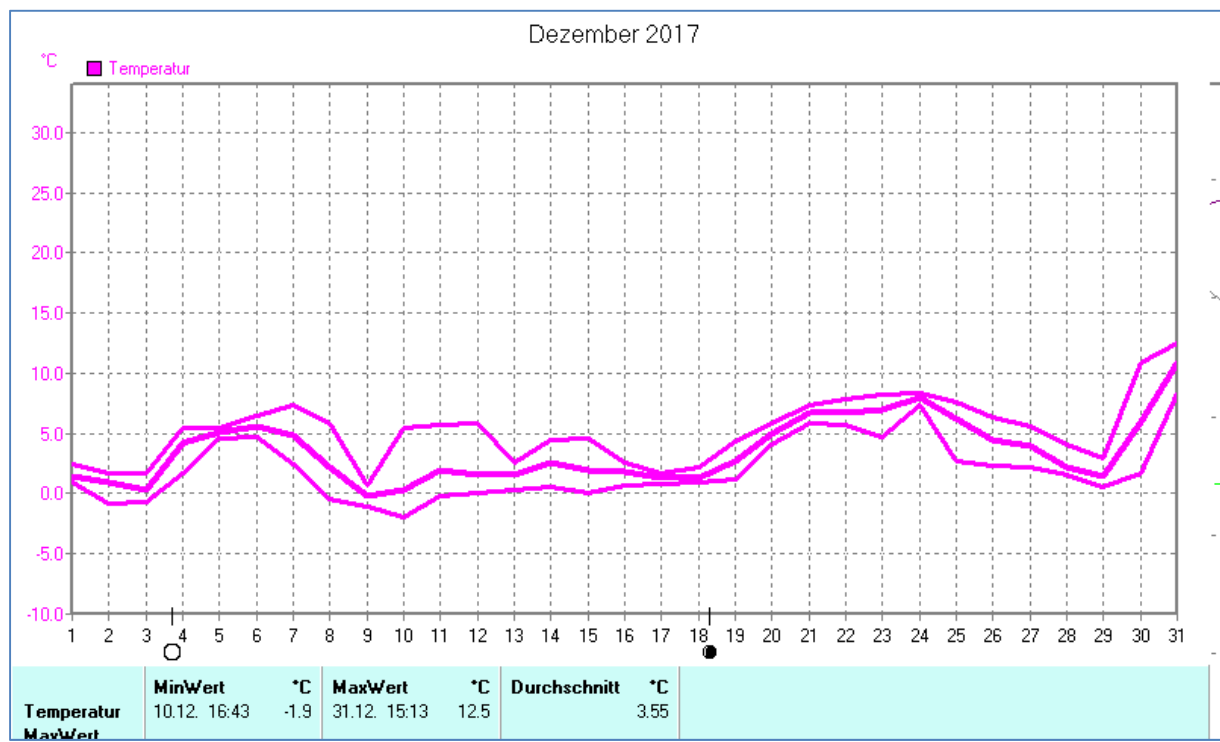
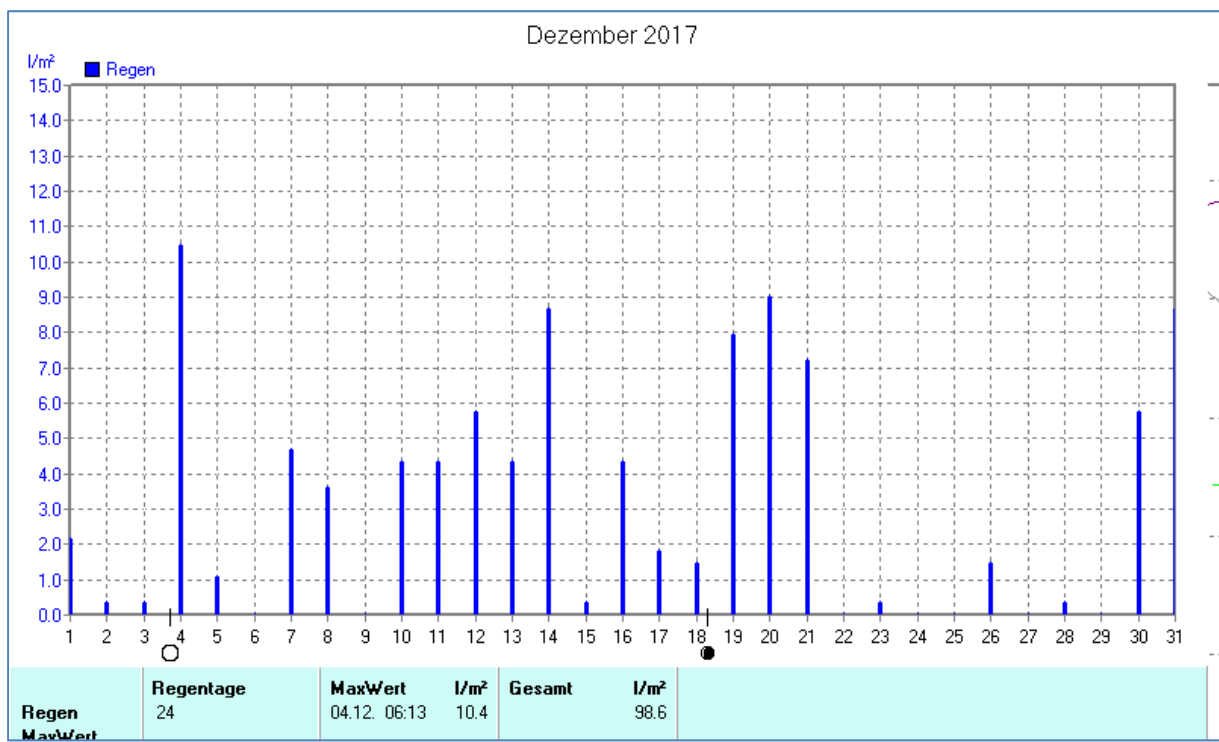
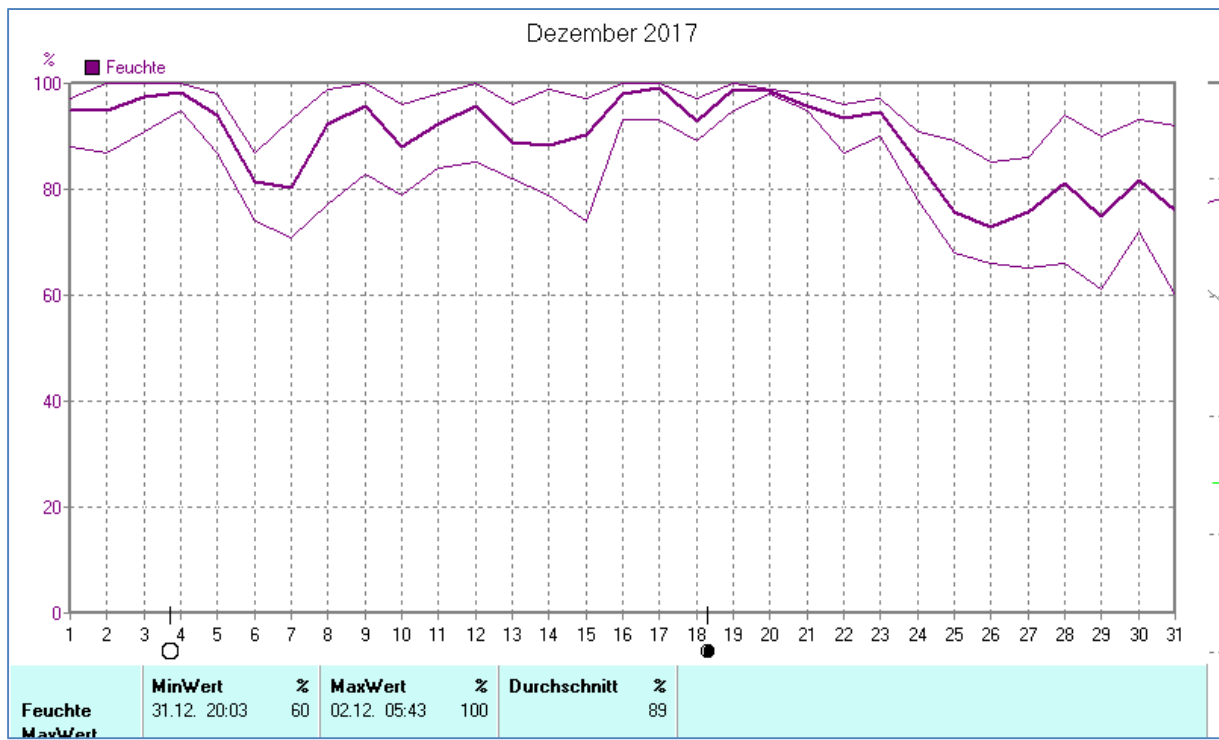
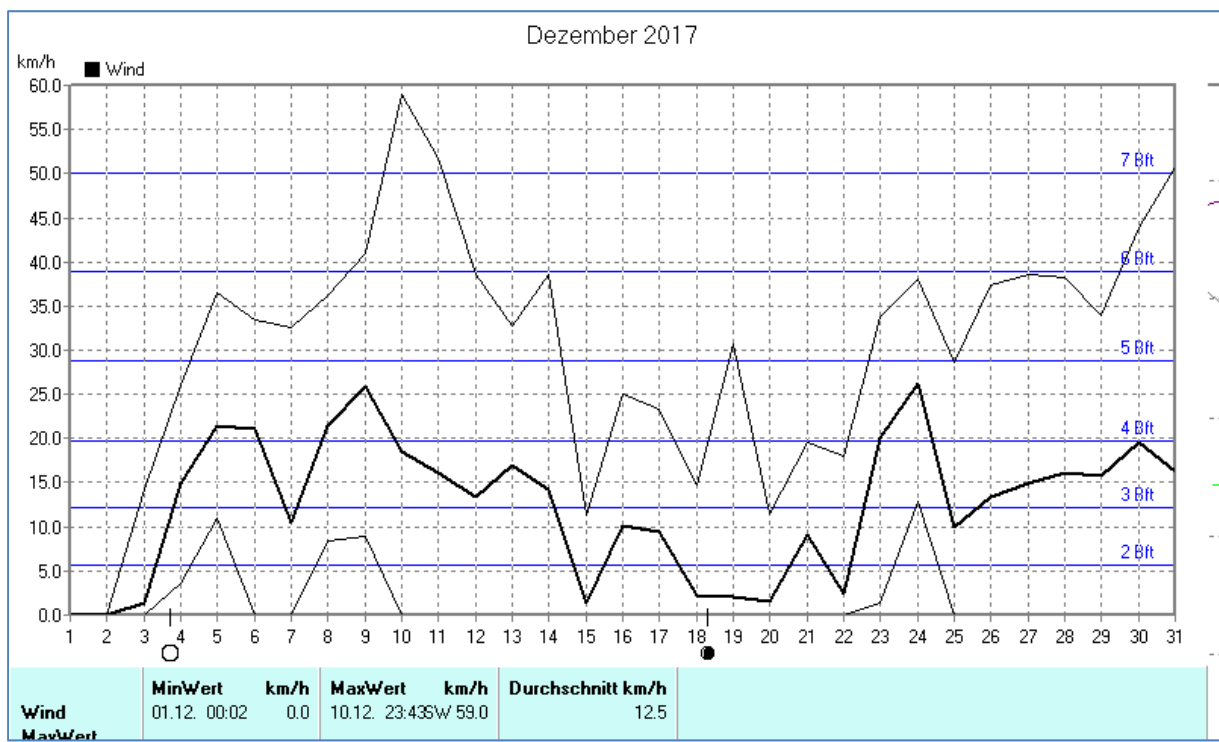
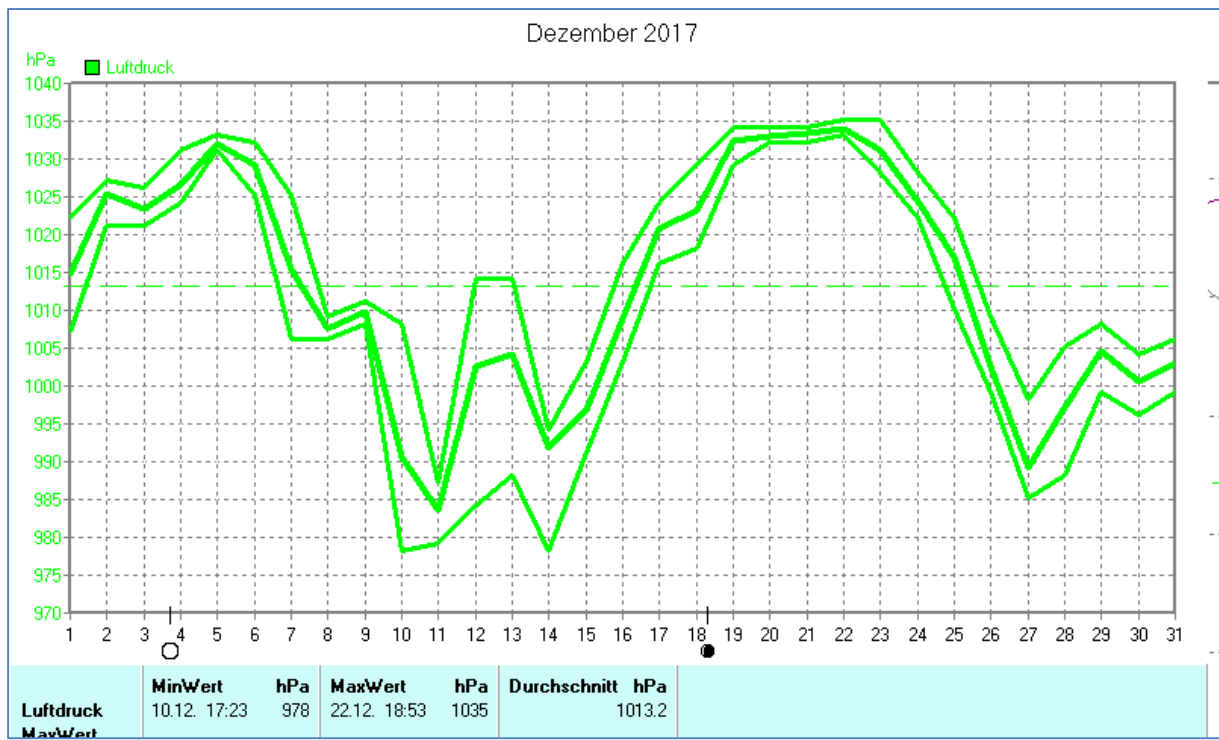


Wettertabelle und Grafiken Dezember 2017 Station Dahl

<u>Wetterdaten Dezember 2017 Station Dahl</u>							
Meßgröße	Minimum	Zeit	Datum	Maximum	Zeit	Datum	Durchschnitt
Temperatur	-1,9 °C	16:43	10.12.2017	12,5 °C	15:13	31.12.2017	3,6 °C
Bodentemp.	-1,5 °C	16:23	10.12.2017	11,5 °C	14:13	31.12.2017	3,2 °C
Luftfeuchte	60 %	20:03	31.12.2017	100 %	05:43	02.12.2017	89 %
Luftdruck	978 hPa	17:23	10.12.2017	1035 hPa	18:53	22.12.2017	1013 hPa
Wind km/h				59,0 km/h	23:43	10.12.2017	12,5 km/h
Wind °				SW	23:43	10.12.2017	NW
Regen l/m ²				10,4 l/m ²	06:13	04.12.2017	#98,640 l/m ²
Sonne h				4:20 h	13:43	29.12.2017	#13:58 h

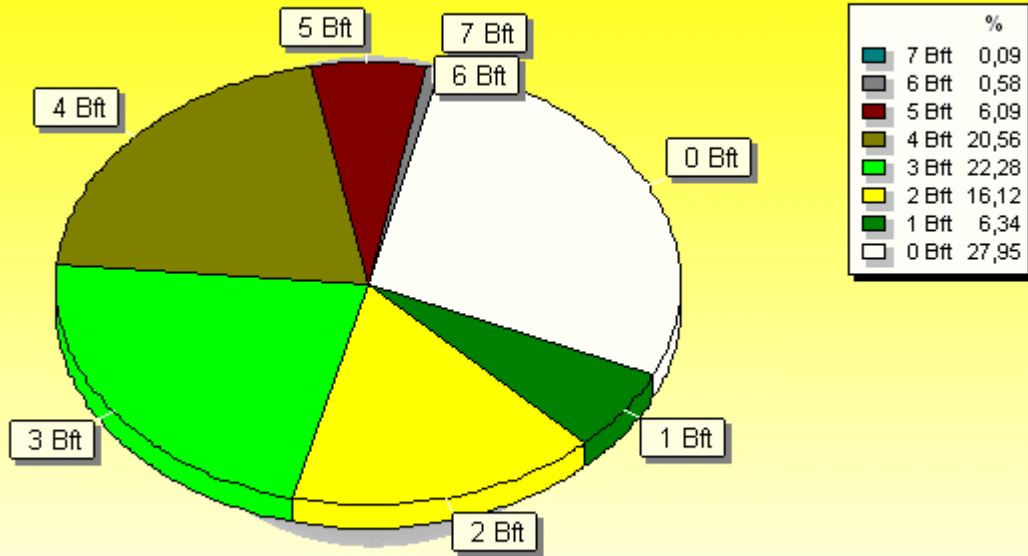






Verteilung Windstärke Dezember 2017

Paderborn - Dahl, Vossberg

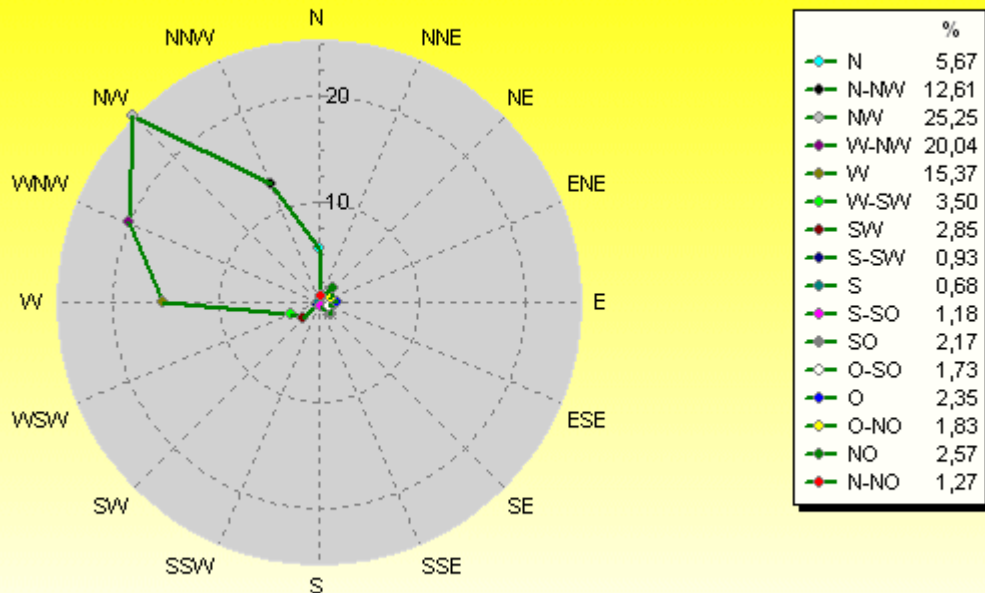


4480 Werte - Ø 12,5km/h - Max. 59,0km/h

© WzWin32

Verteilung Windrichtung Dezember 2017

Paderborn - Dahl, Vossberg



3228 / 1252 Werte -> 27.9% Windstille - Ø 12,5km/h - Max. 59,0km/h

© WzWin32

