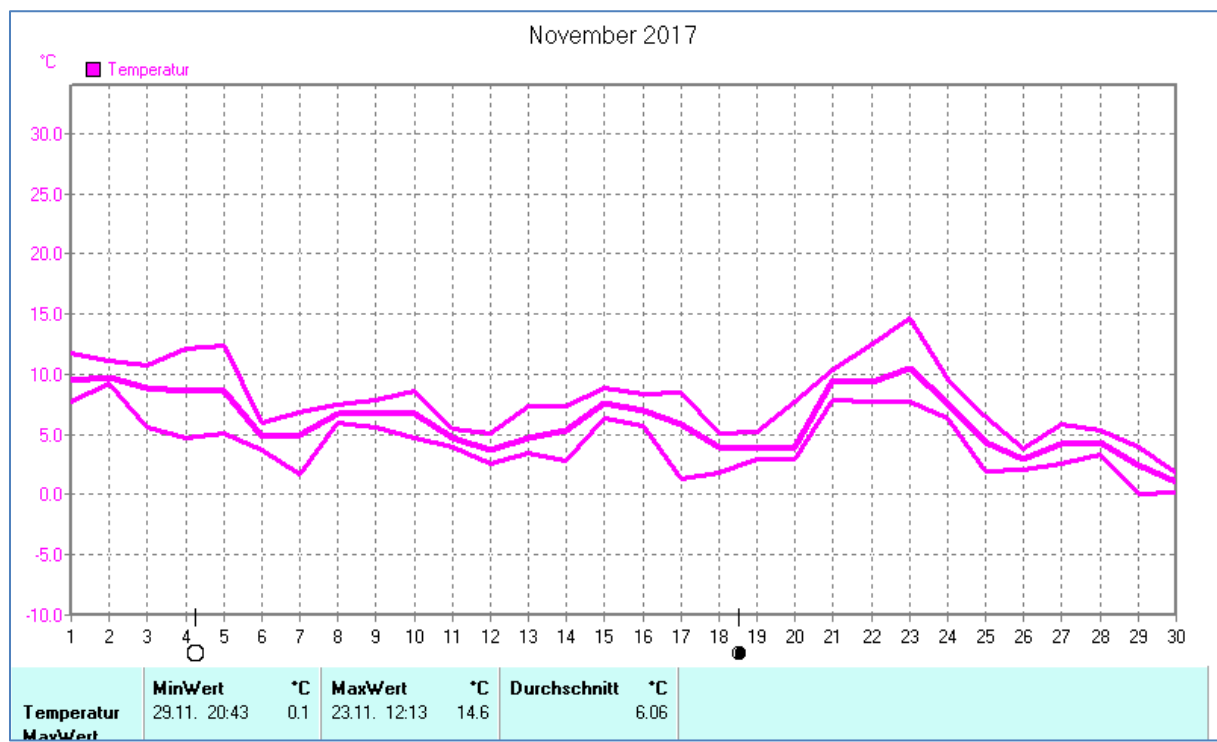
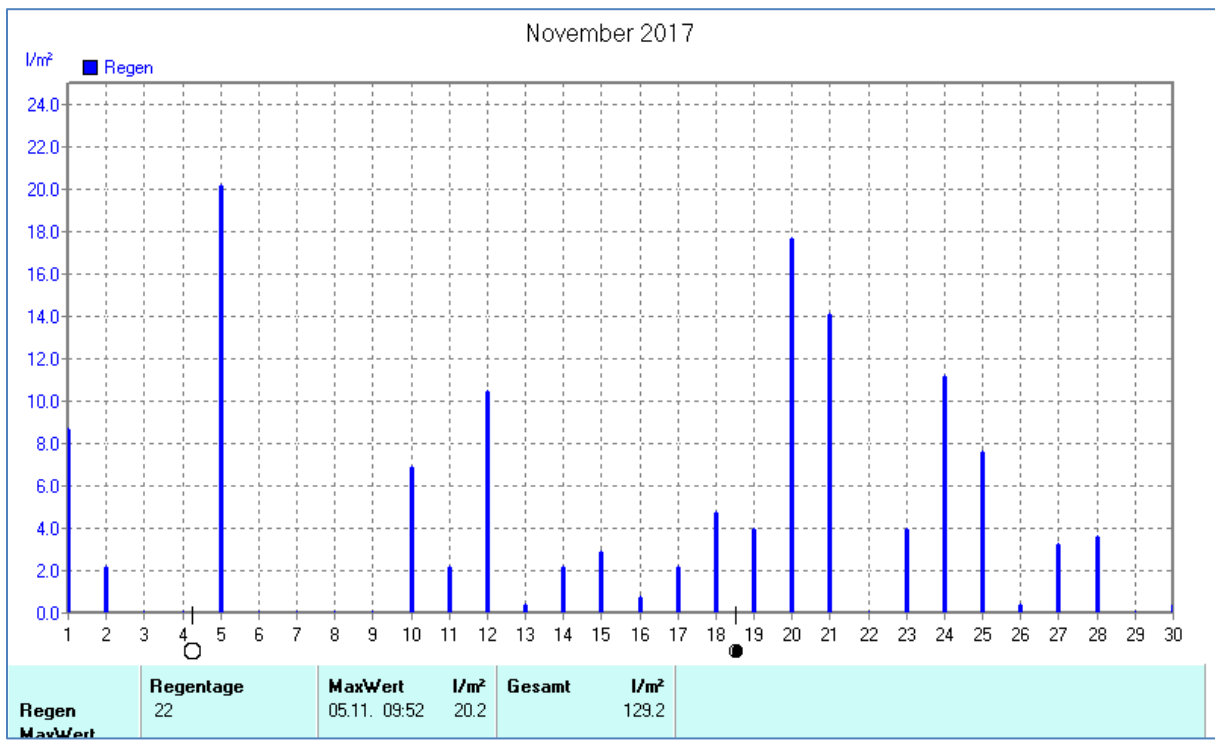
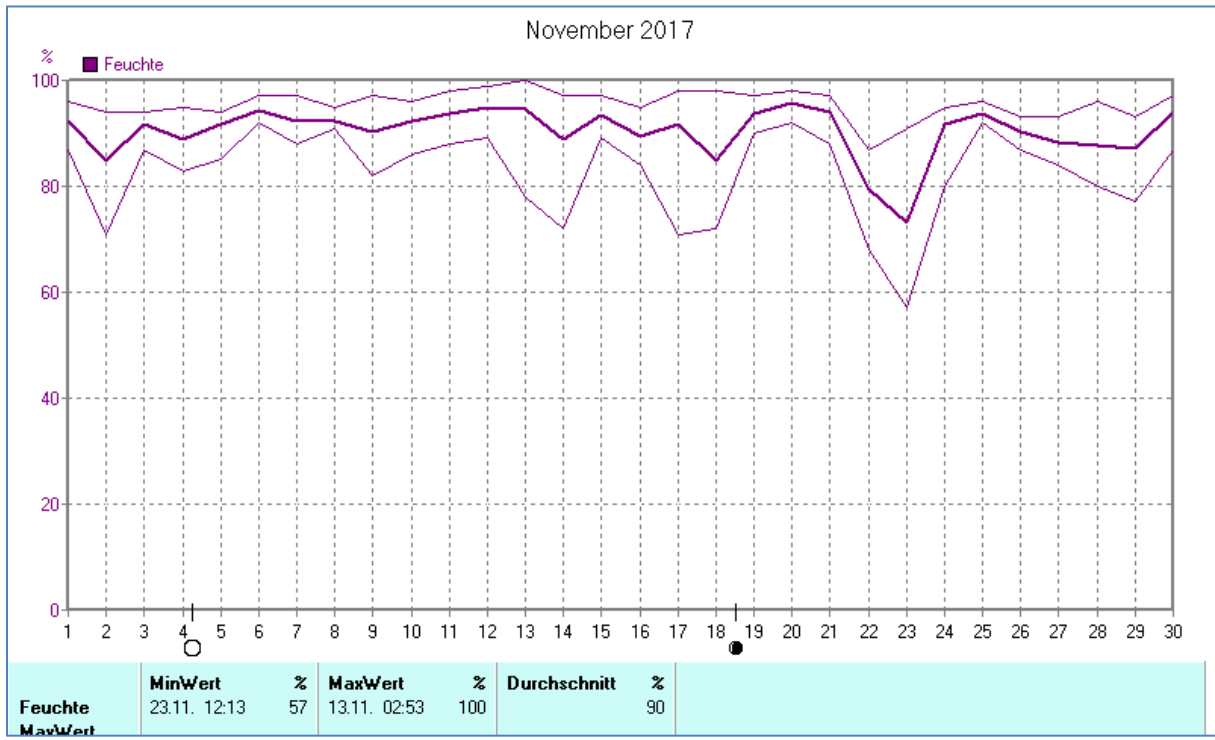
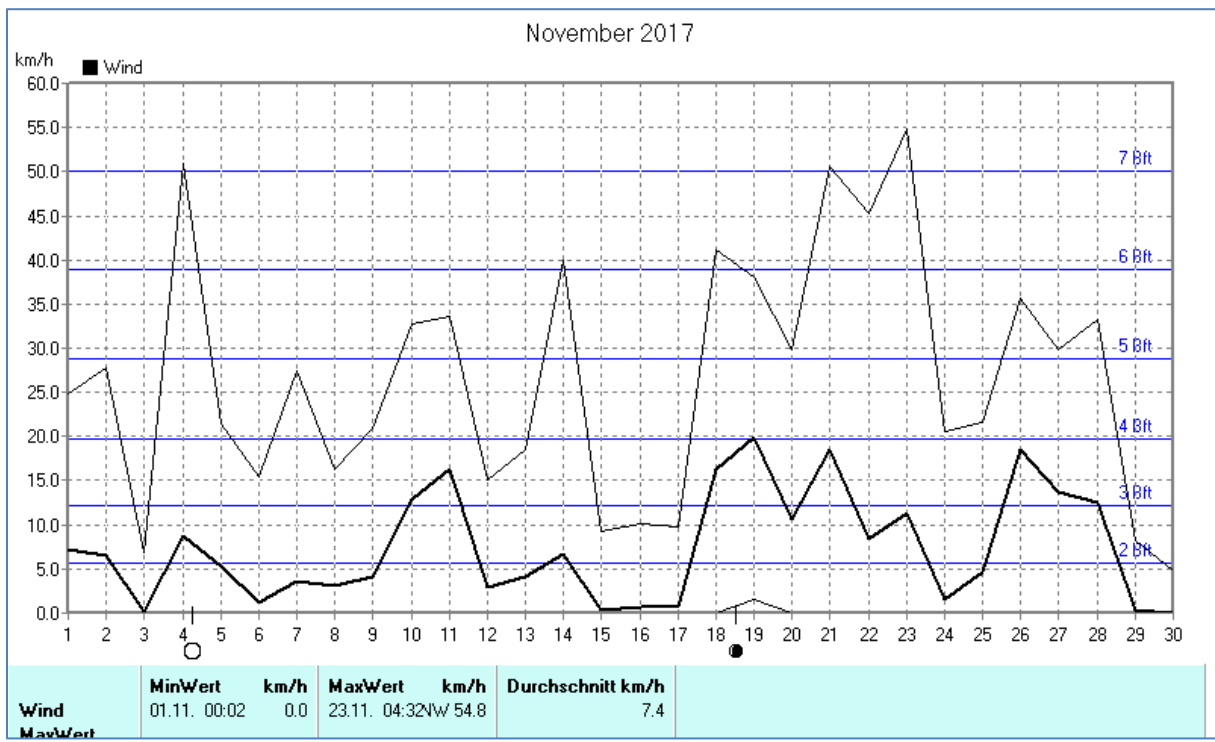
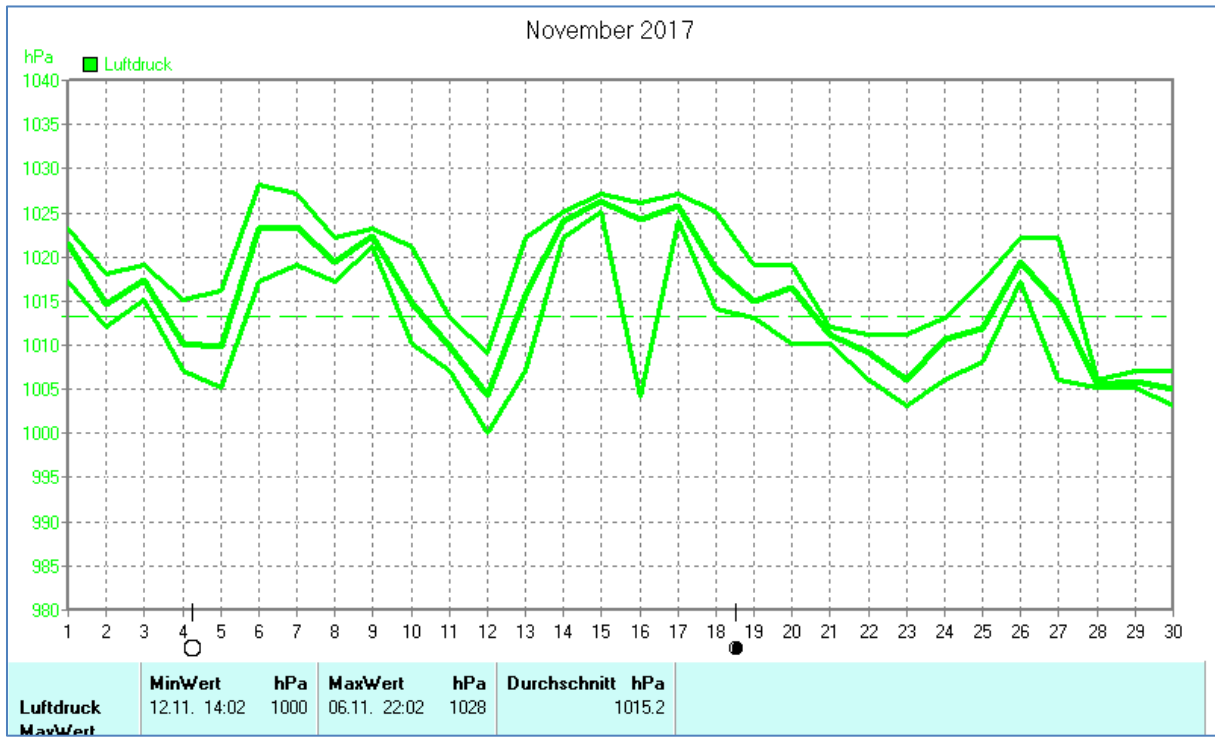


Wettertabelle und Grafiken November 2017 Station Dahl

Wetterdaten November 2017 Station Dahl							
Meßgröße	Minimum	Zeit	Datum	Maximum	Zeit	Datum	Durchschnitt
Temperatur	0,1 °C	20:43	29.11.2017	14,6 °C	12:13	23.11.2017	6,1 °C
Bodentemp.	-1,2 °C	20:43	29.11.2017	13,6 °C	11:52	23.11.2017	5,7 °C
Luftfeuchte	57 %	12:13	23.11.2017	100 %	02:53	13.11.2017	90 %
Luftdruck	1000 hPa	14:02	12.11.2017	1028 hPa	22:02	06.11.2017	1015 hPa
Wind km/h				54,8 km/h	04:32	23.11.2017	7,4 km/h
Wind °				N-NW	04:32	23.11.2017	N-NW
Regen l/m ²				20,2 l/m ²	09:52	05.11.2017	#129,240 l/m ²
Sonne h				2:10 h	13:12	04.11.2017	#11:01 h

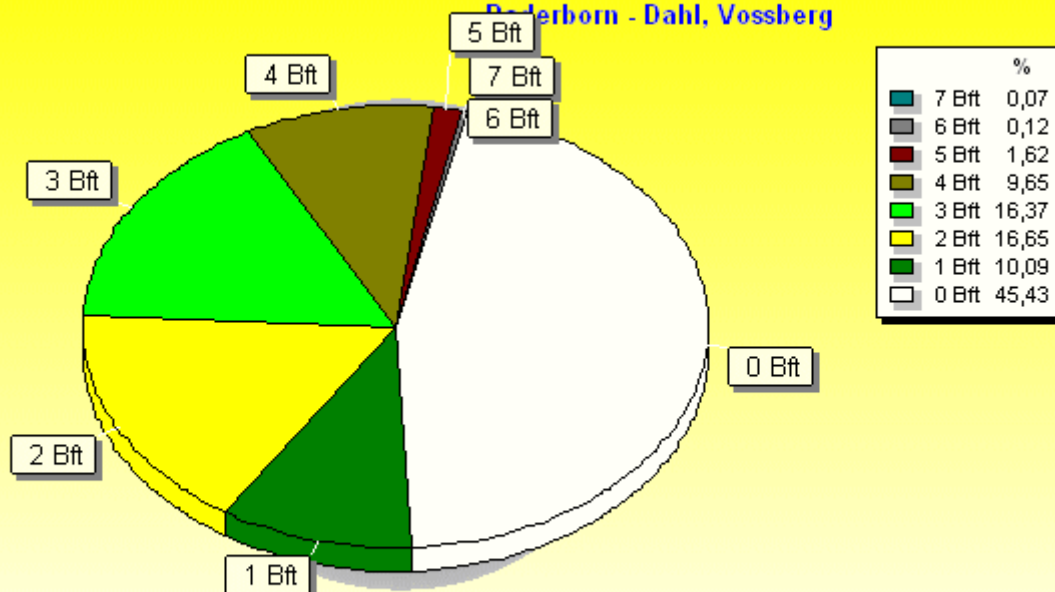






Verteilung Windstärke November 2017

Paderborn - Dahl, Vossberg

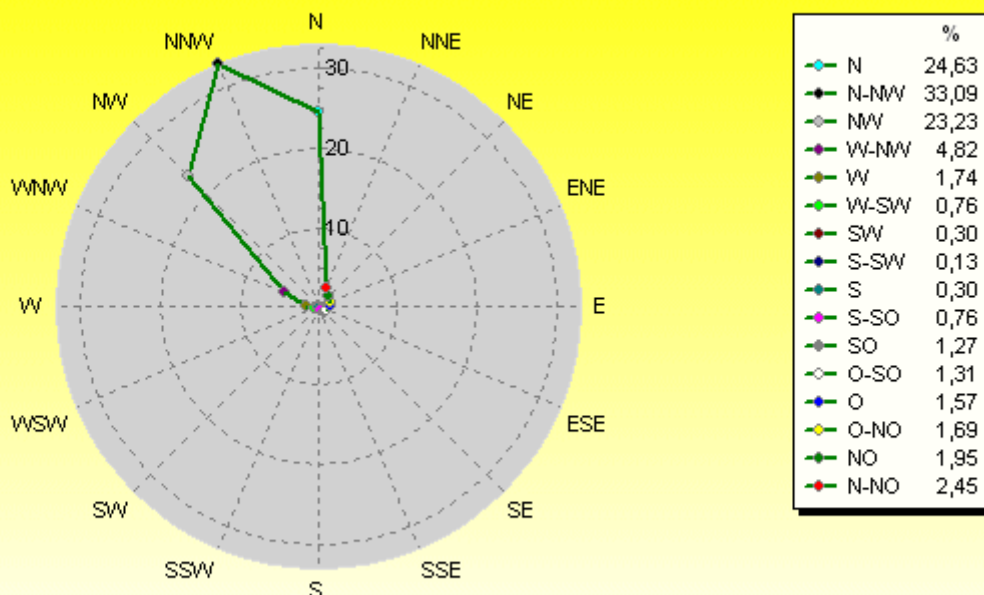


4330 Werte - Ø 7,4km/h - Max. 54,8km/h

© WzWin32

Verteilung Windrichtung November 2017

Paderborn - Dahl, Vossberg



2363 / 1967 Werte -> 45.4% Windstille - Ø 7,4km/h - Max. 54,8km/h

© WzWin32

