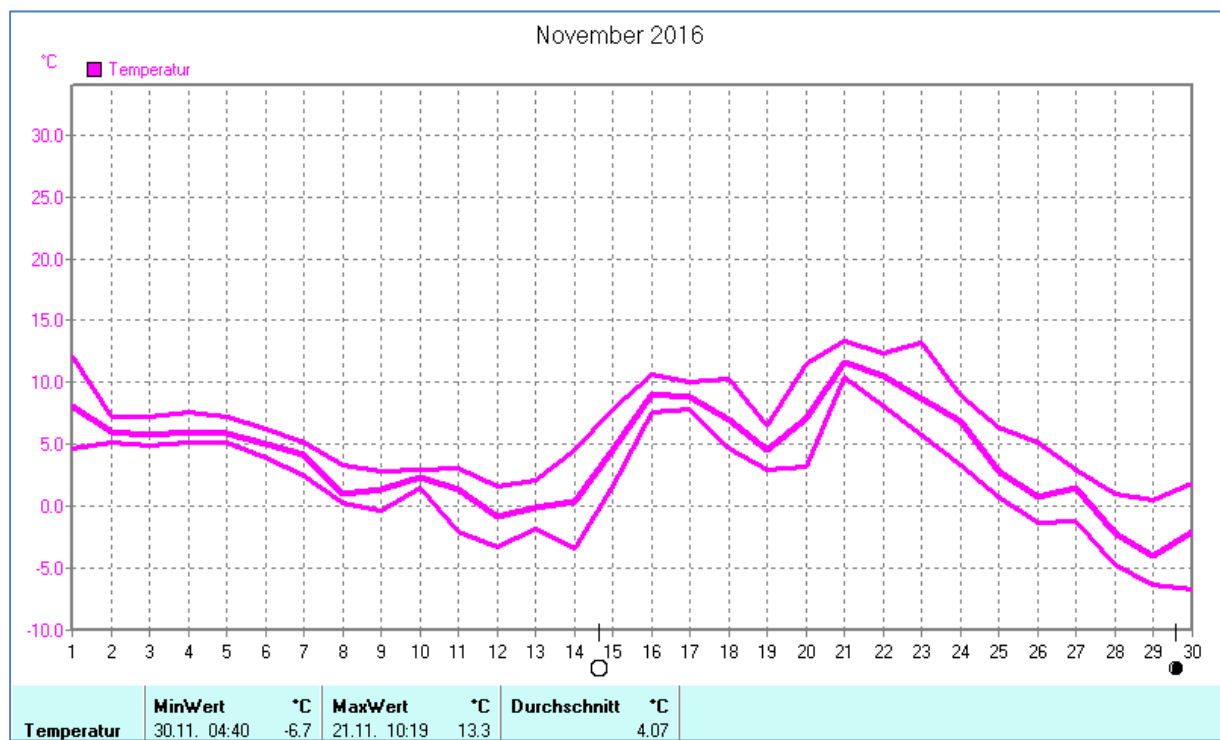
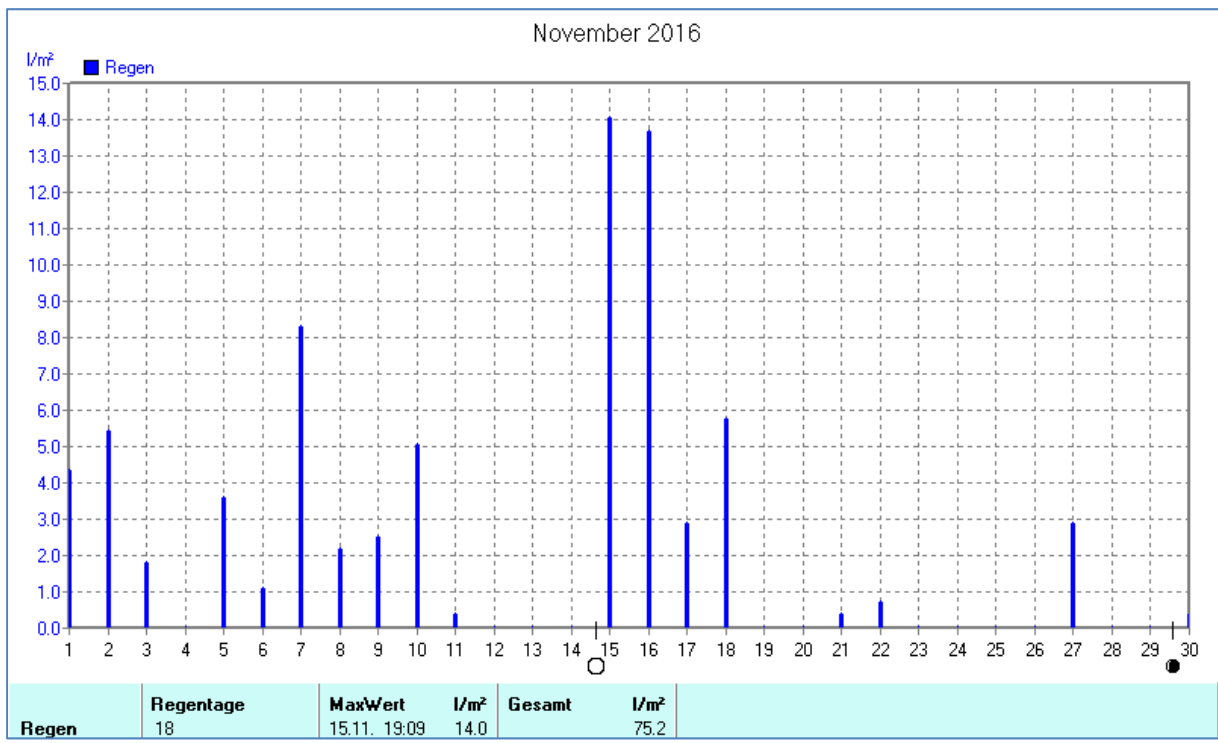
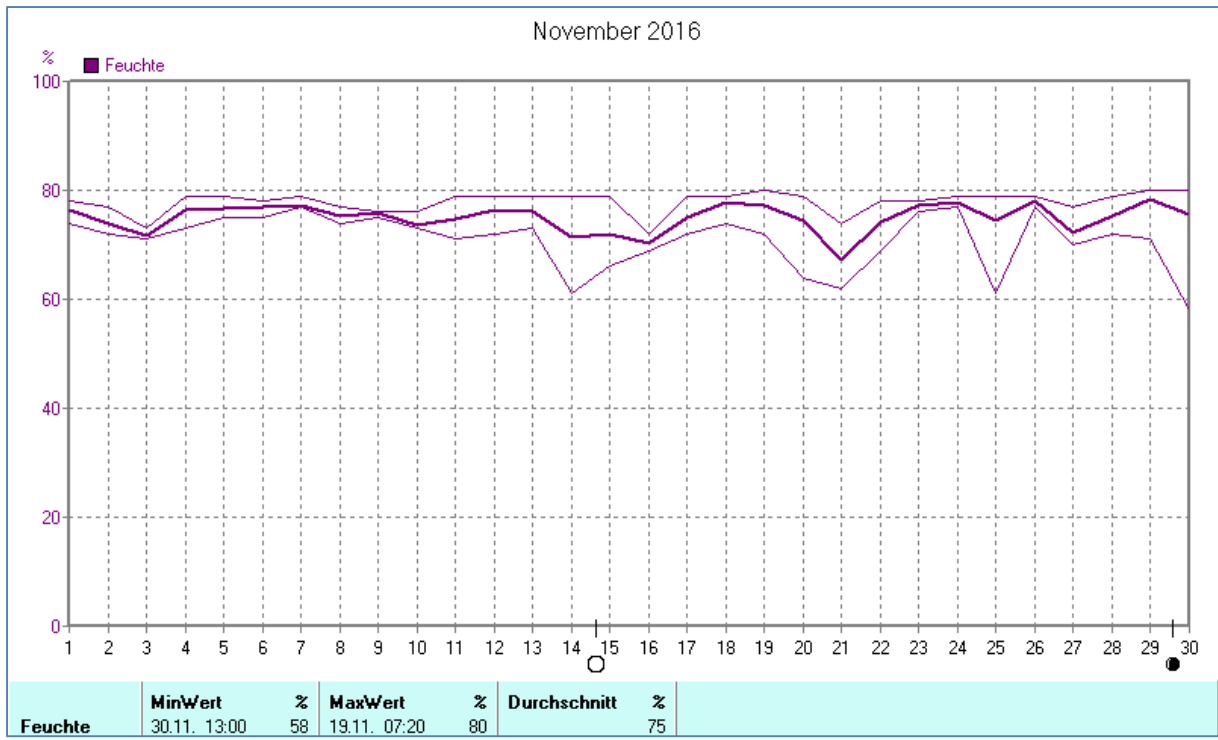
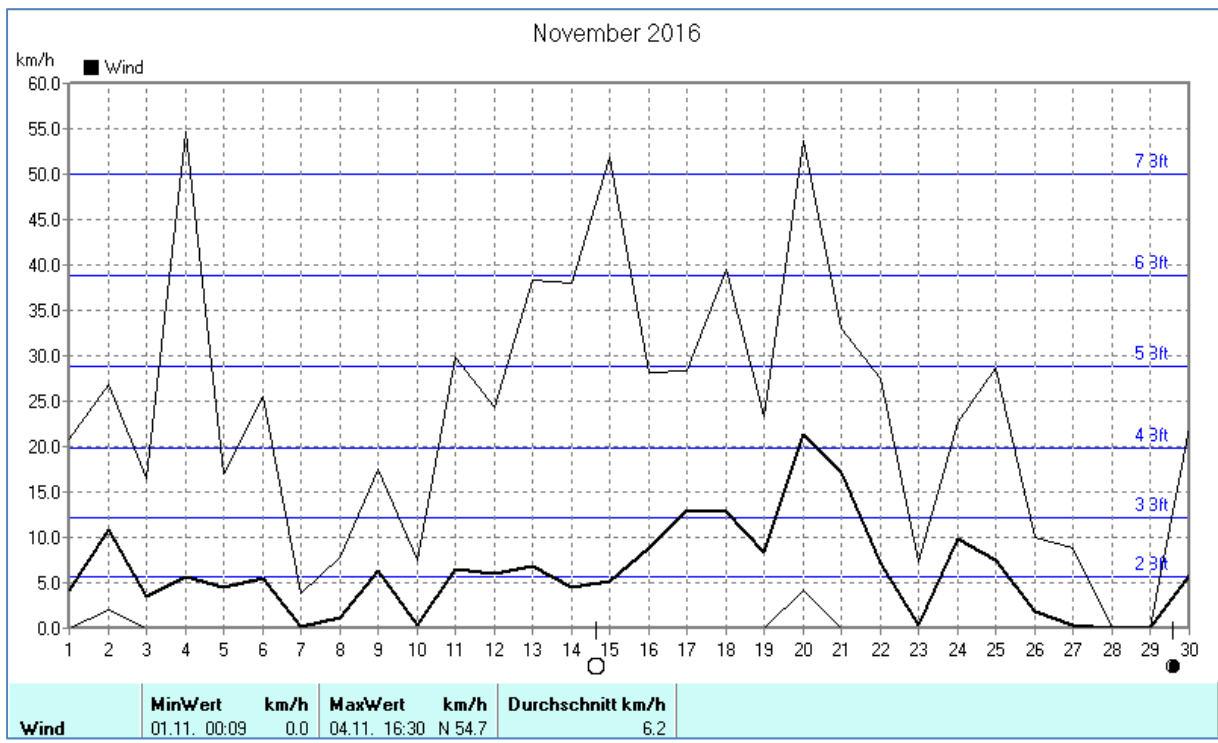
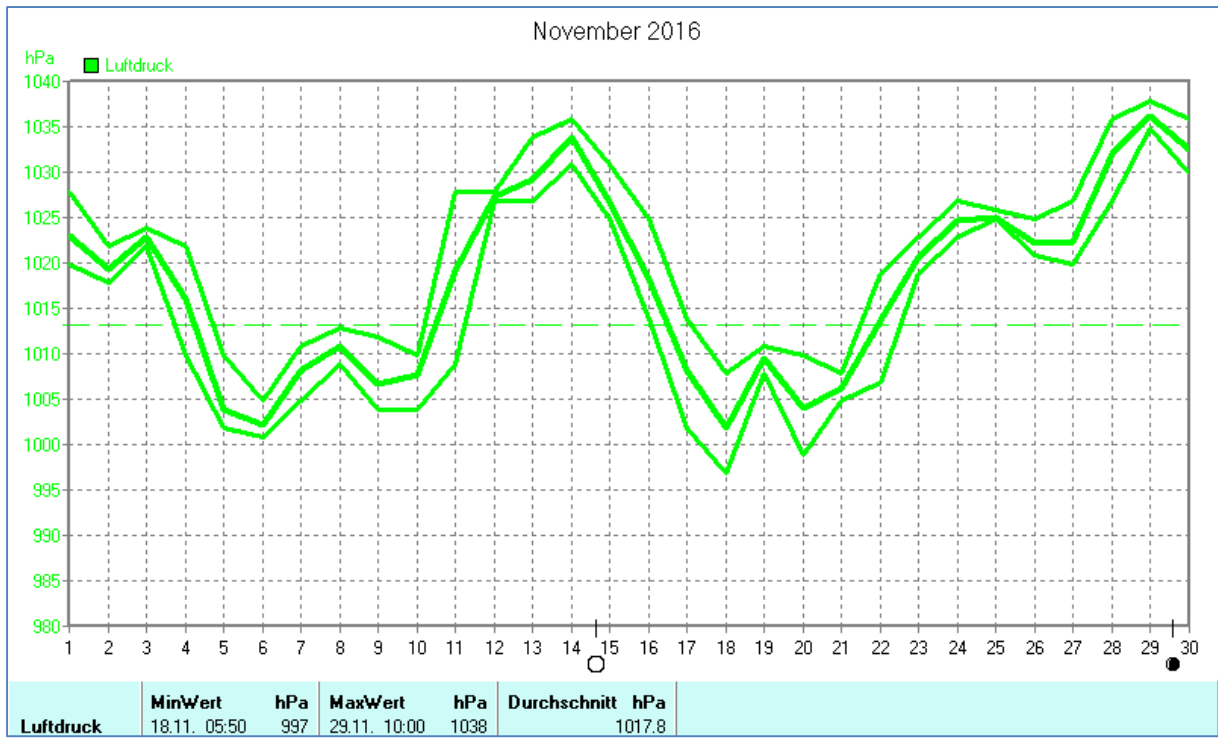


Wettertabelle und Grafiken November 2016 Station Dahl

<u>Wetterdaten November 2016 Station Dahl</u>							
Meßgröße	Minimum	Zeit	Datum	Maximum	Zeit	Datum	Durchschnitt
Temperatur	-6,7 °C	04:40	30.11.2016	13,3 °C	10:19	21.11.2016	4,1 °C
Bodentemp.	-7,8 °C	04:20	30.11.2016	13,5 °C	14:20	23.11.2016	3,9 °C
Luftfeuchte	58 %	13:00	30.11.2016	80 %	07:20	19.11.2016	75 %
Luftdruck	997 hPa	05:50	18.11.2016	1038 hPa	10:00	29.11.2016	1018 hPa
Wind km/h				54,7 km/h	16:30	04.11.2016	6,2 km/h
Wind °				N	16:30	04.11.2016	N
Regen l/m ²				14,0 l/m ²	19:09	15.11.2016	#75,240 l/m ²
Sonne h				5:01 h	13:20	01.11.2016	#40:48 h

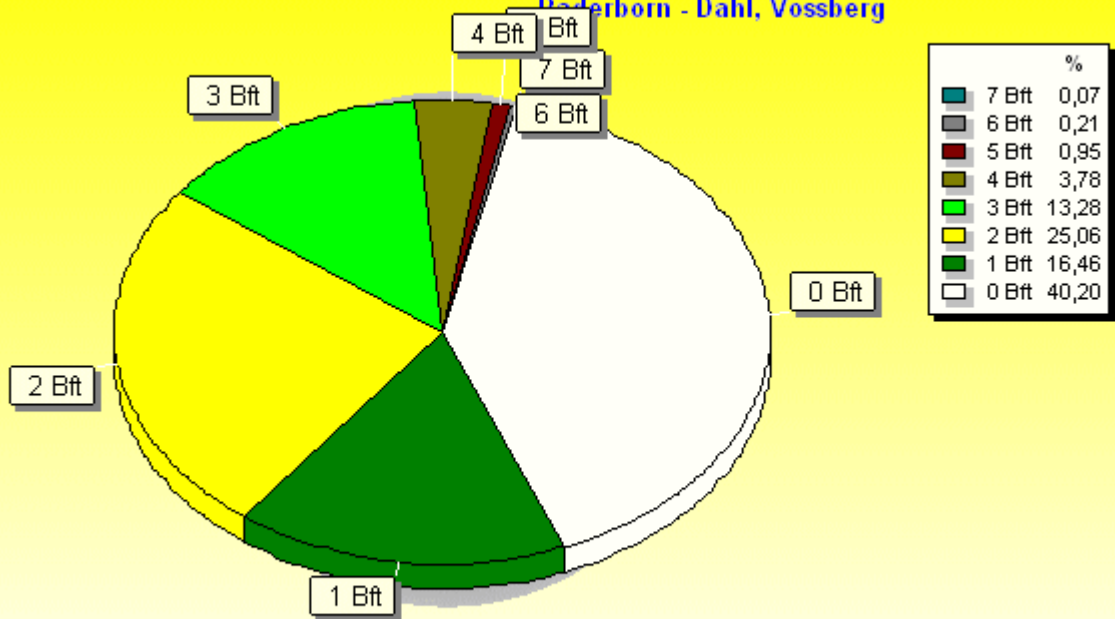






Verteilung Windstärke November 2016

Paderborn - Dahl, Vossberg

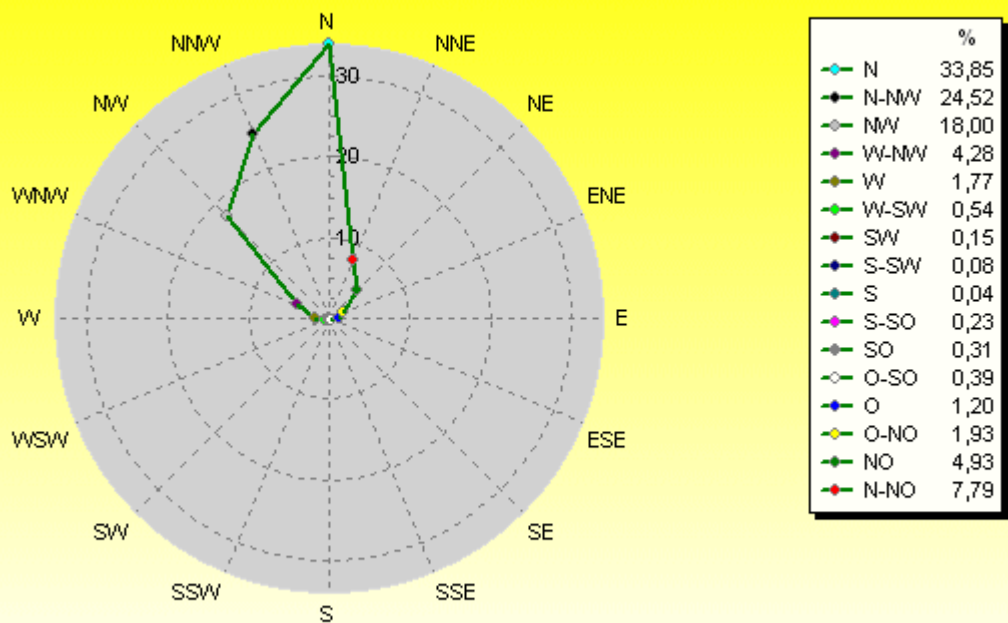


4338 Werte - Ø 6,2km/h - Max. 54,7km/h

© WzWin32

Verteilung Windrichtung November 2016

Paderborn - Dahl, Vossberg



2594 / 1744 Werte -> 40.2% Windstille - Ø 6,2km/h - Max. 54,7km/h

© WzWin32

