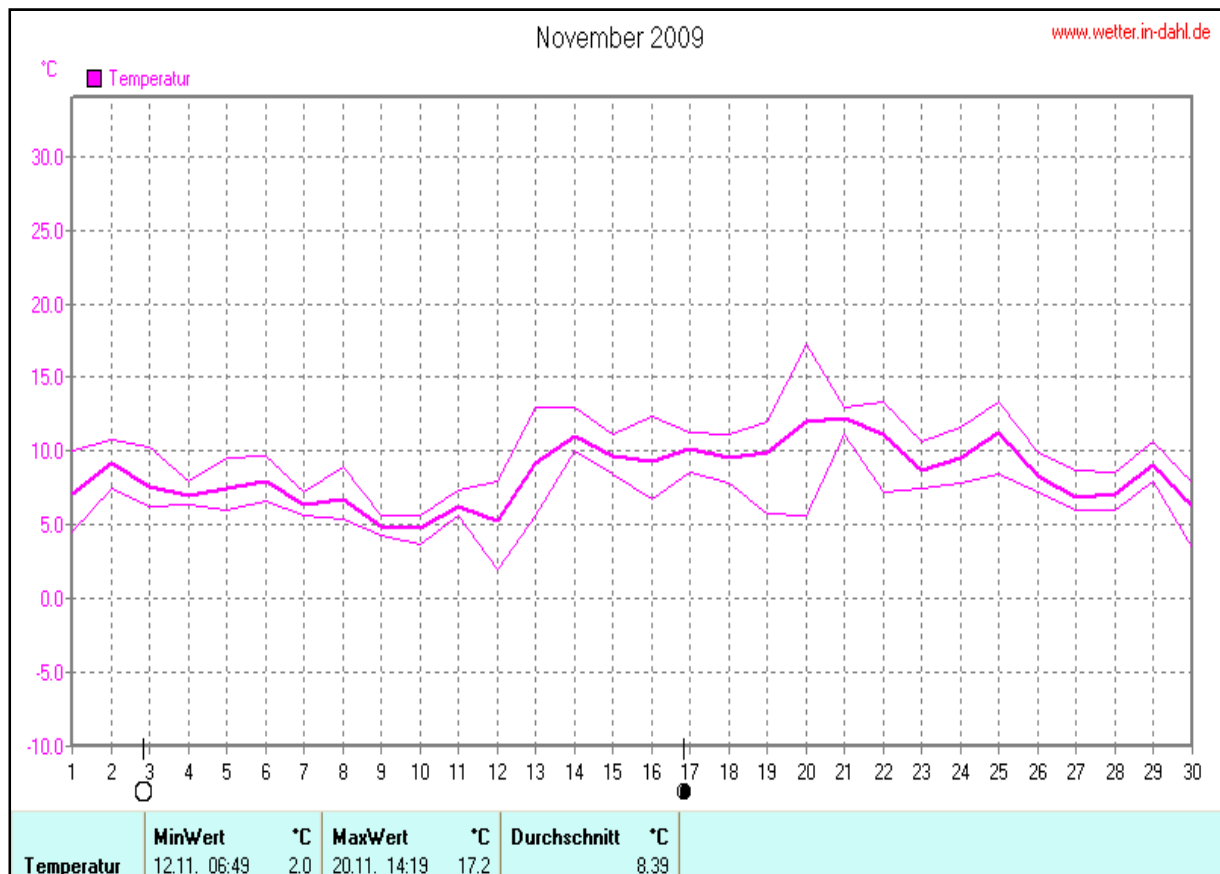
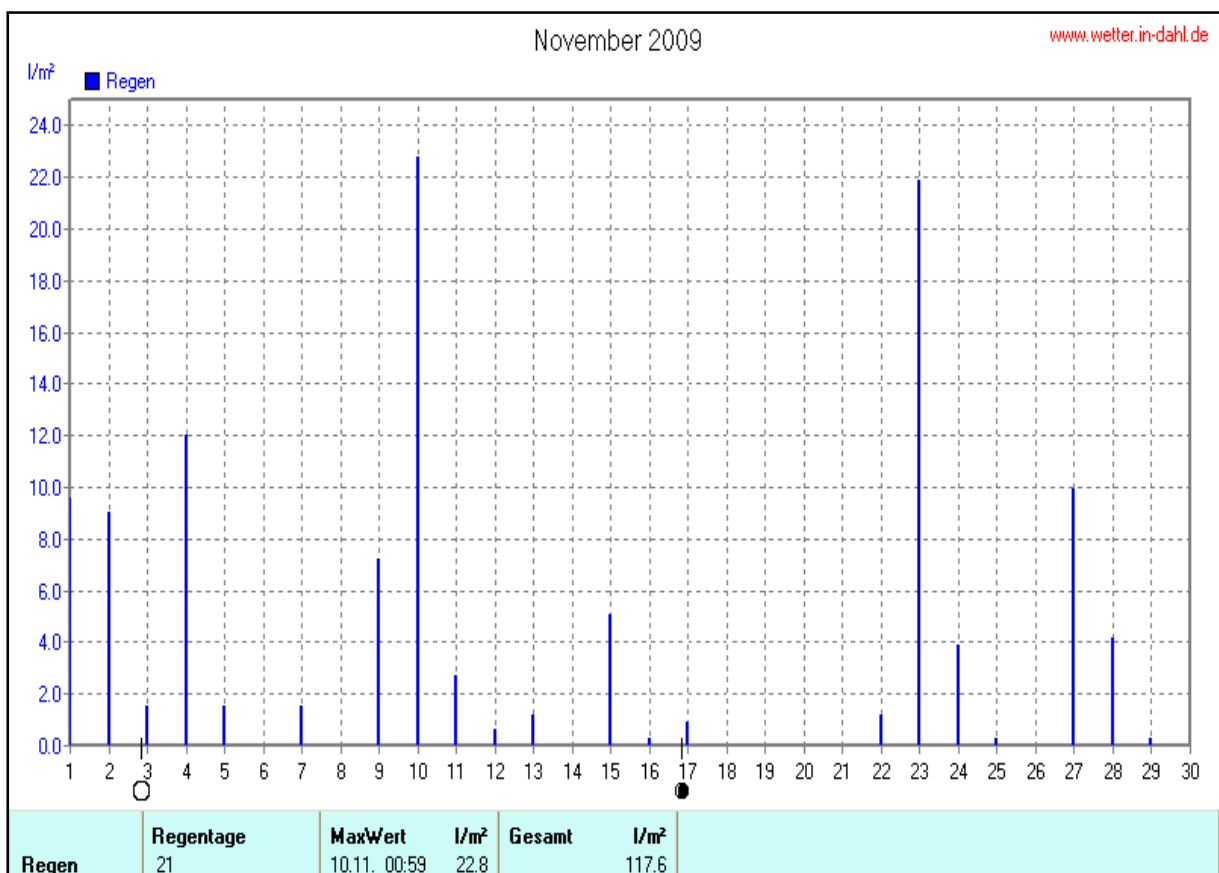
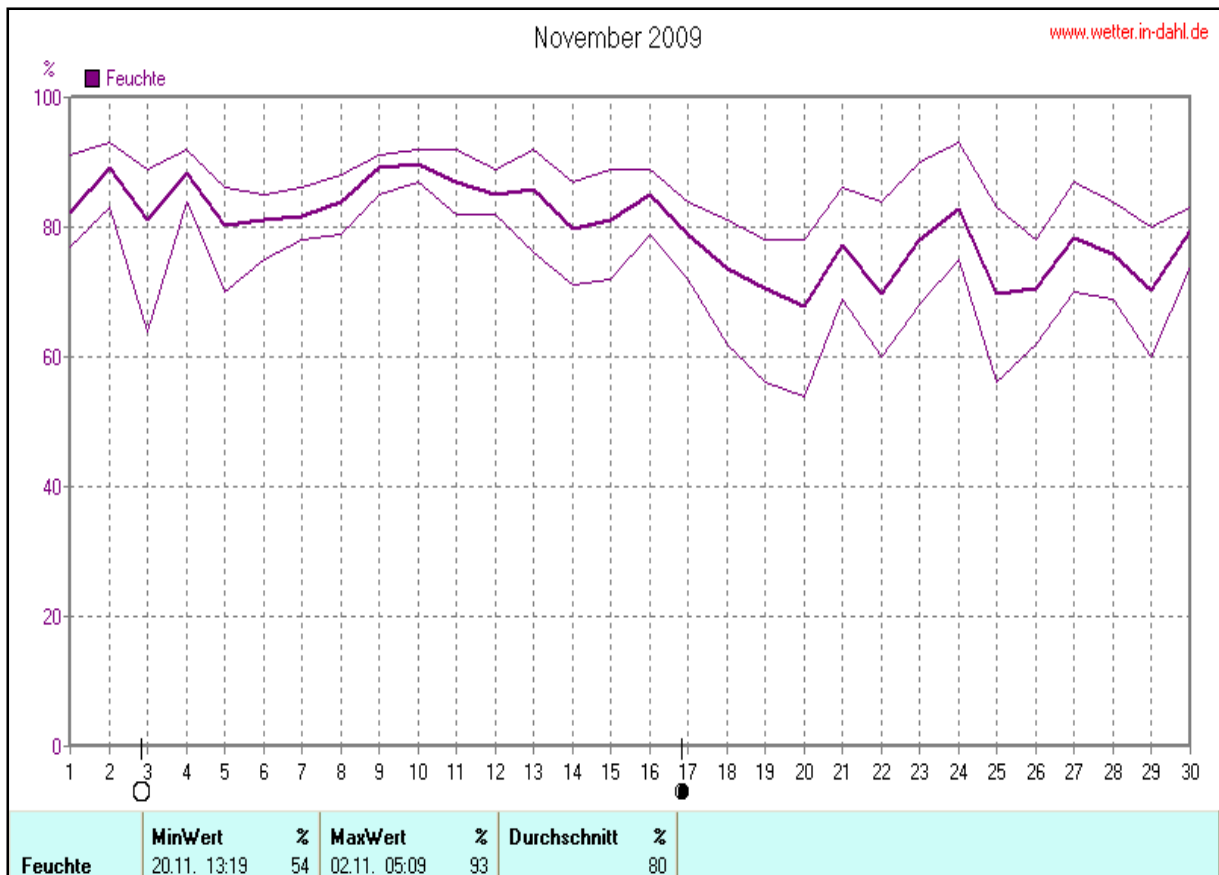
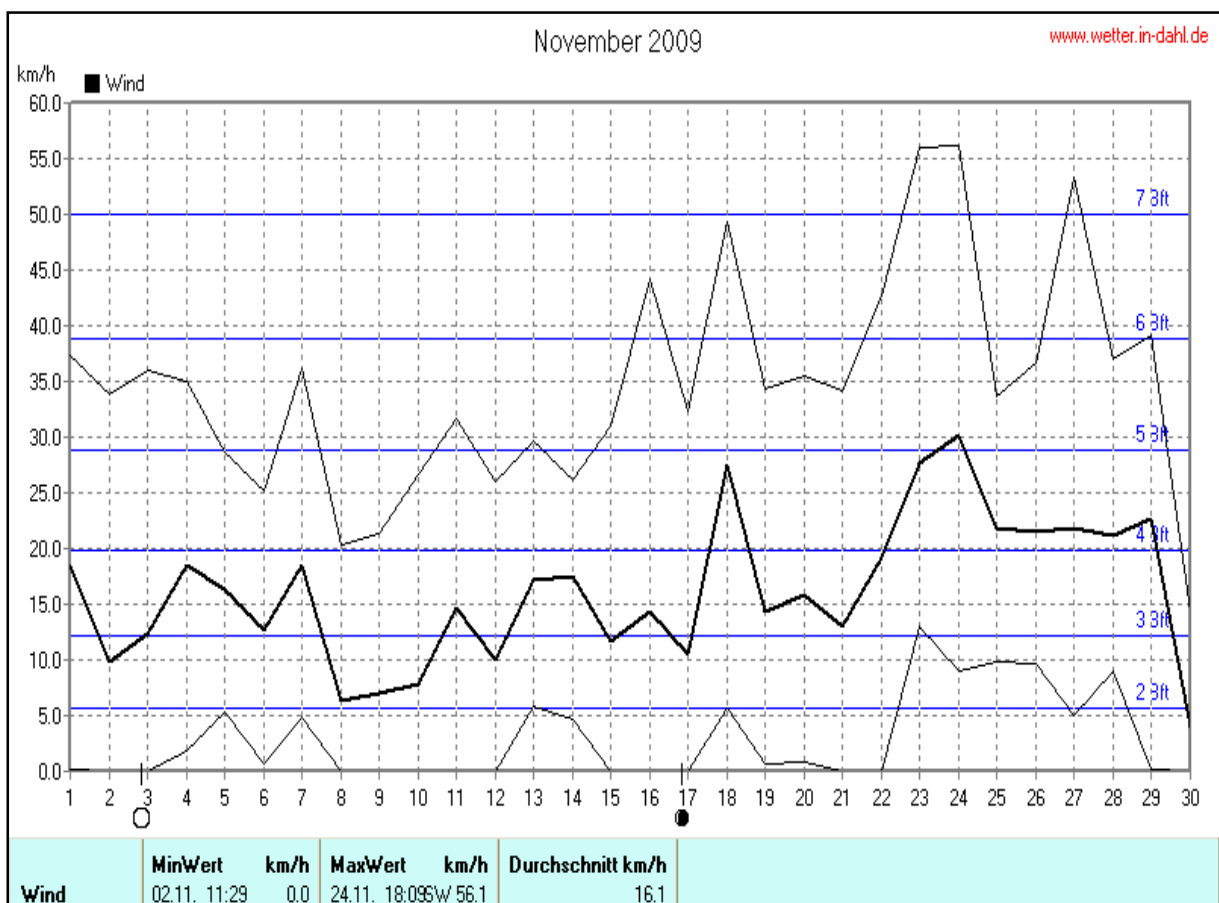
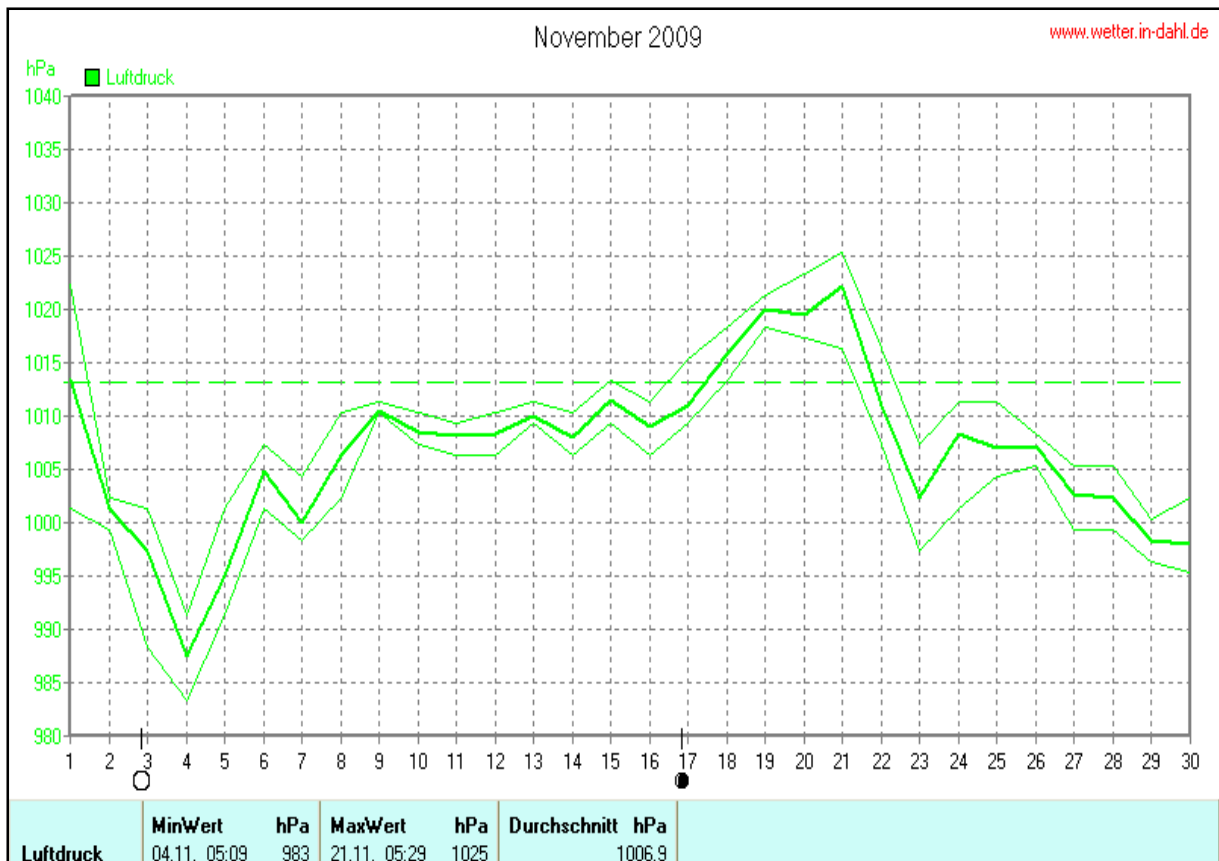


Wettertabelle und Grafiken November 2009 Station Dahl

Wetterdaten November 2009 Station Dahl							
Meßgröße	Minimum	Zeit	Datum	Maximum	Zeit	Datum	Durchschnitt
Temperatur (2m)	2,0 °C	06:49	12.11.2009	17,2 °C	14:19	20.11.2009	8,4 °C
Bodentemperatur	0,0 °C	05:29	12.11.2009	17,8 °C	13:39	20.11.2009	8,0 °C
Luftfeuchte	54%	13:19	20.11.2009	93%	05:09	02.11.2009	80%
Luftdruck	983 hPa	05:09	04.11.2009	1025 hPa	05:29	21.11.2009	1007 hPa
Windgeschwindigkeit				56,1 km/h	18:09	24.11.2009	16,1 km/h
Windrichtung				W-SW	18:09	24.11.2009	S-SO
Regenmenge				22,8 l/m ²	00:59	10.11.2009	#117,600 l/m ²
Sonnenschein-Zeit				4,85 h	13:19	20.11.2009	#28:27 h

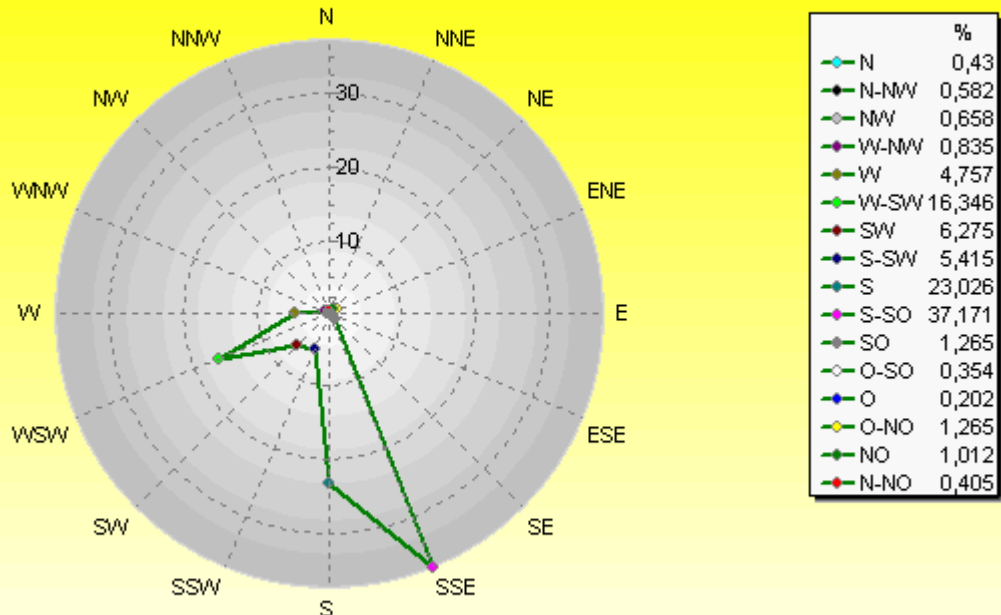






Verteilung Windrichtung November 2009

Paderborn - Dahl, Vossberg

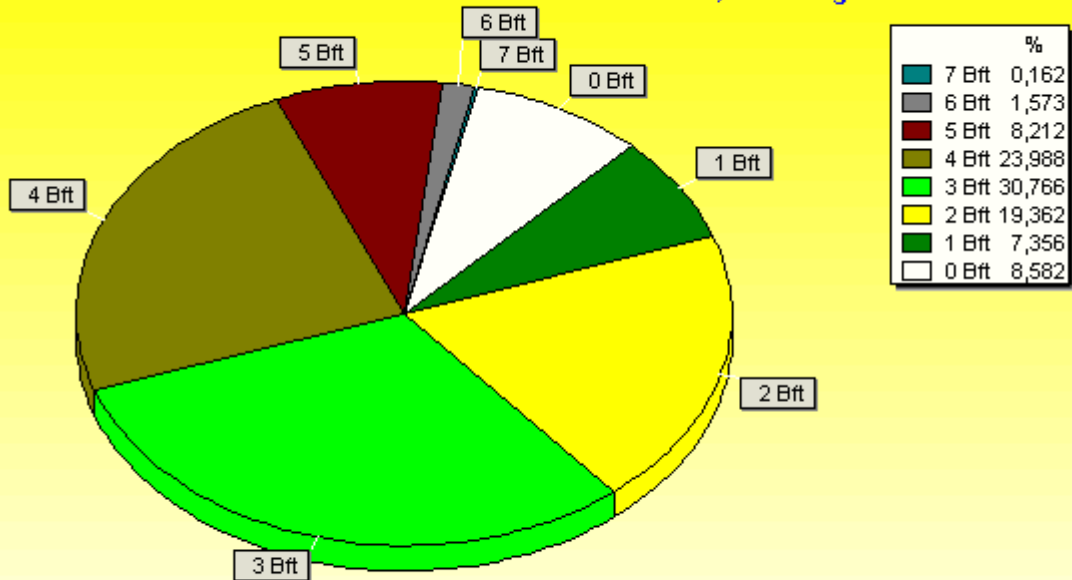


3952 / 371 Werte -> 8.6% Windstille - Ø 16,1km/h - Max. 56,1km/h

© WzWin32

Verteilung Windstärke November 2009

Paderborn - Dahl, Vossberg



4323 Werte - Ø 16,1km/h - Max. 56,1km/h

© WzWin32

