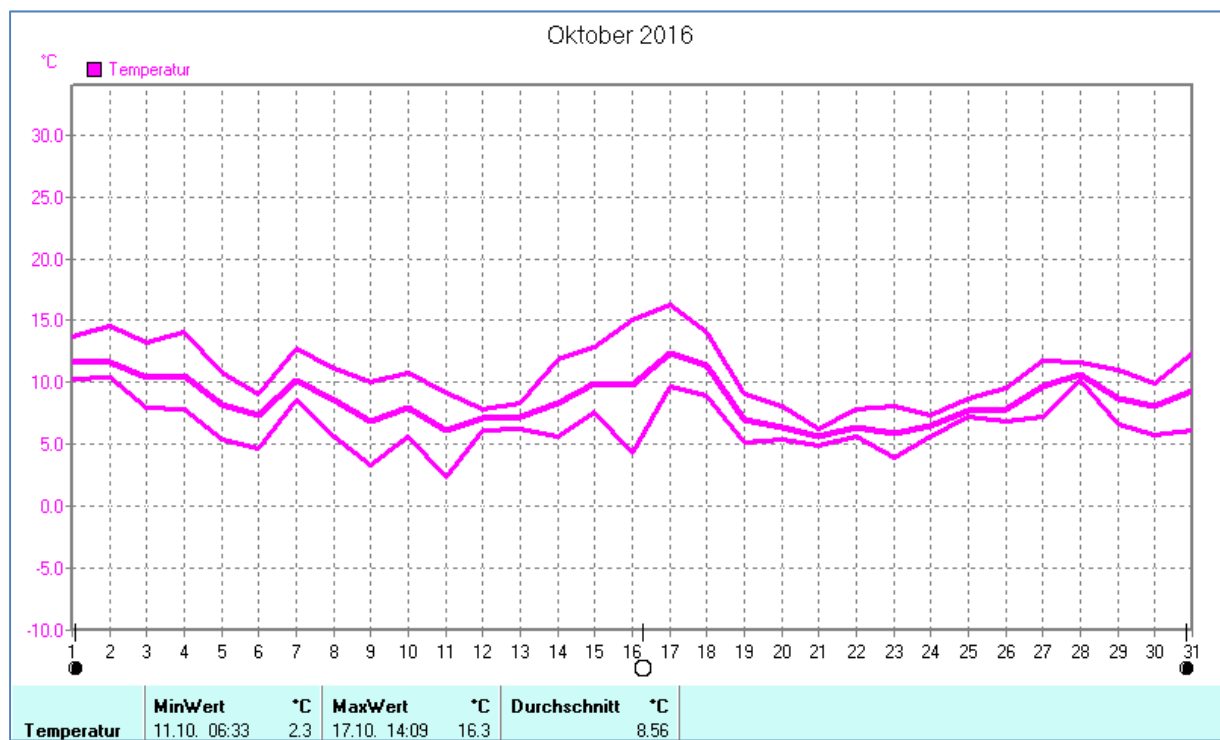
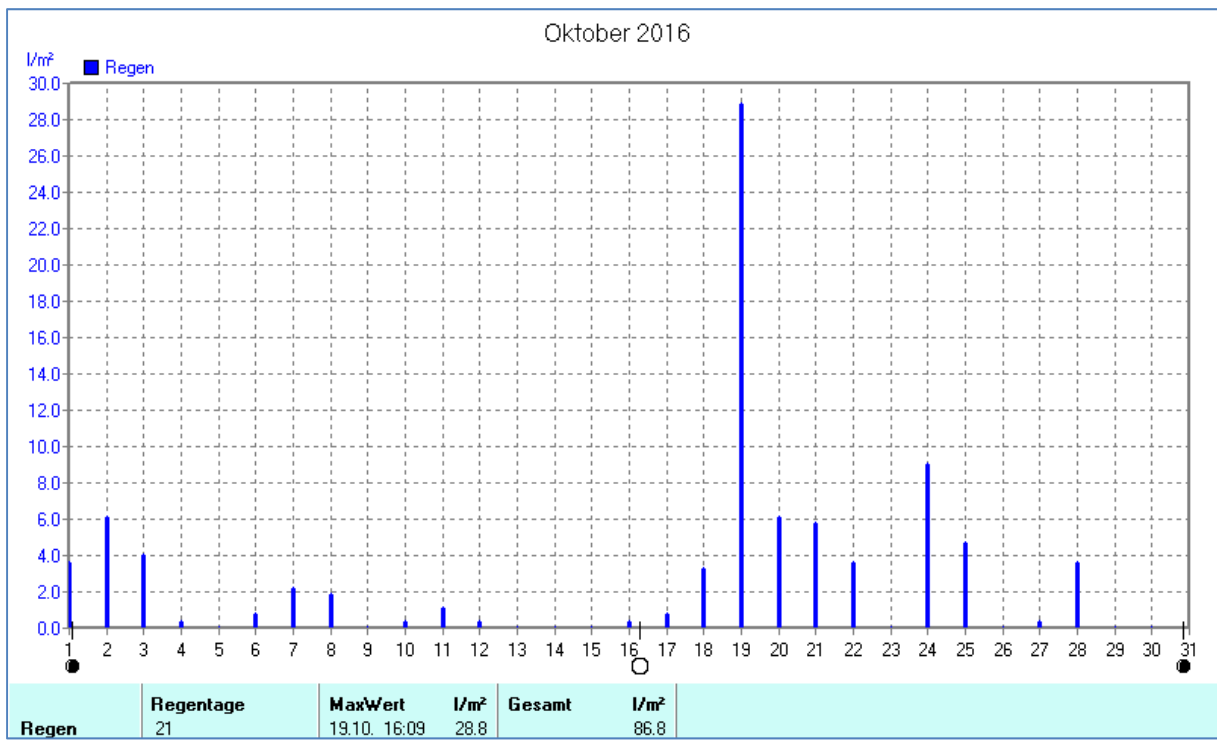
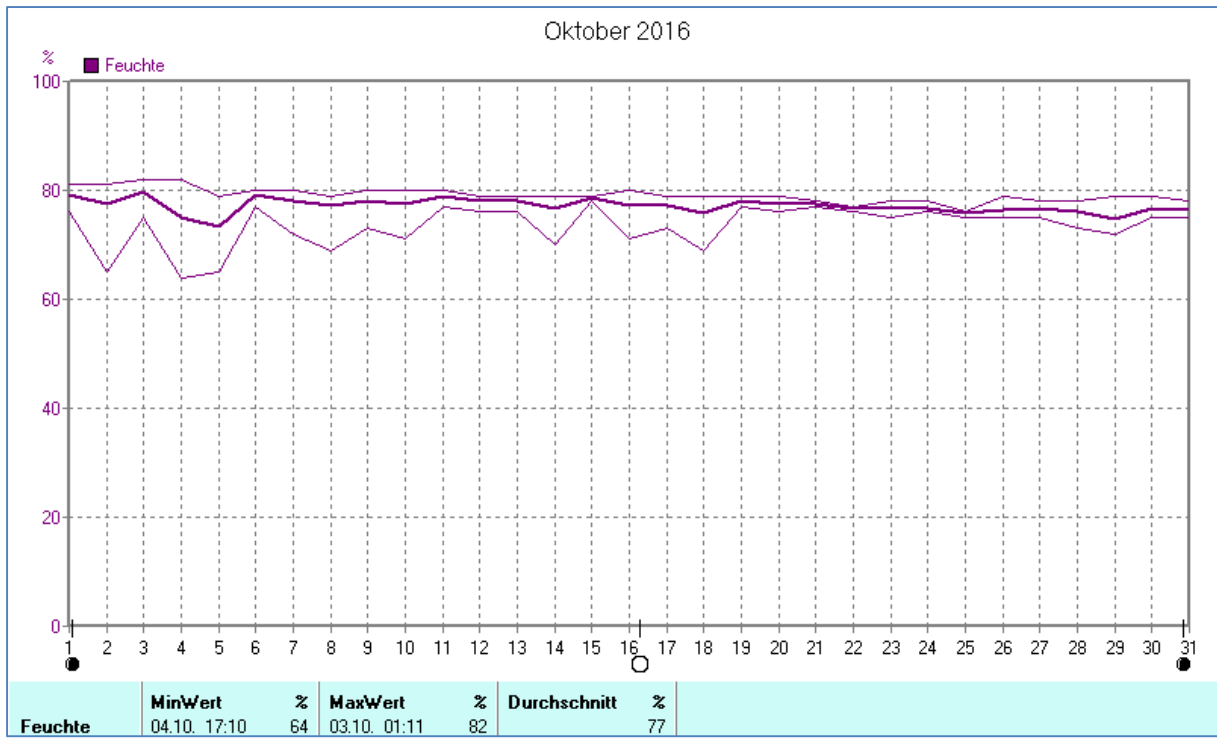
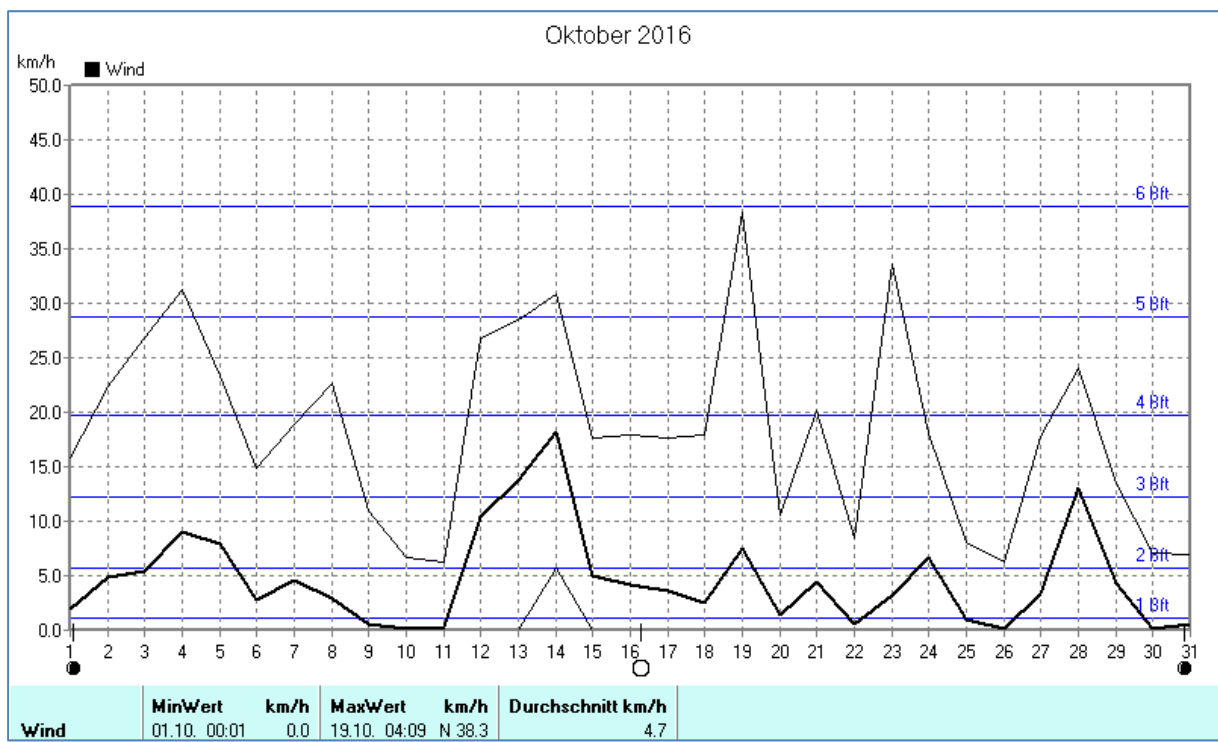
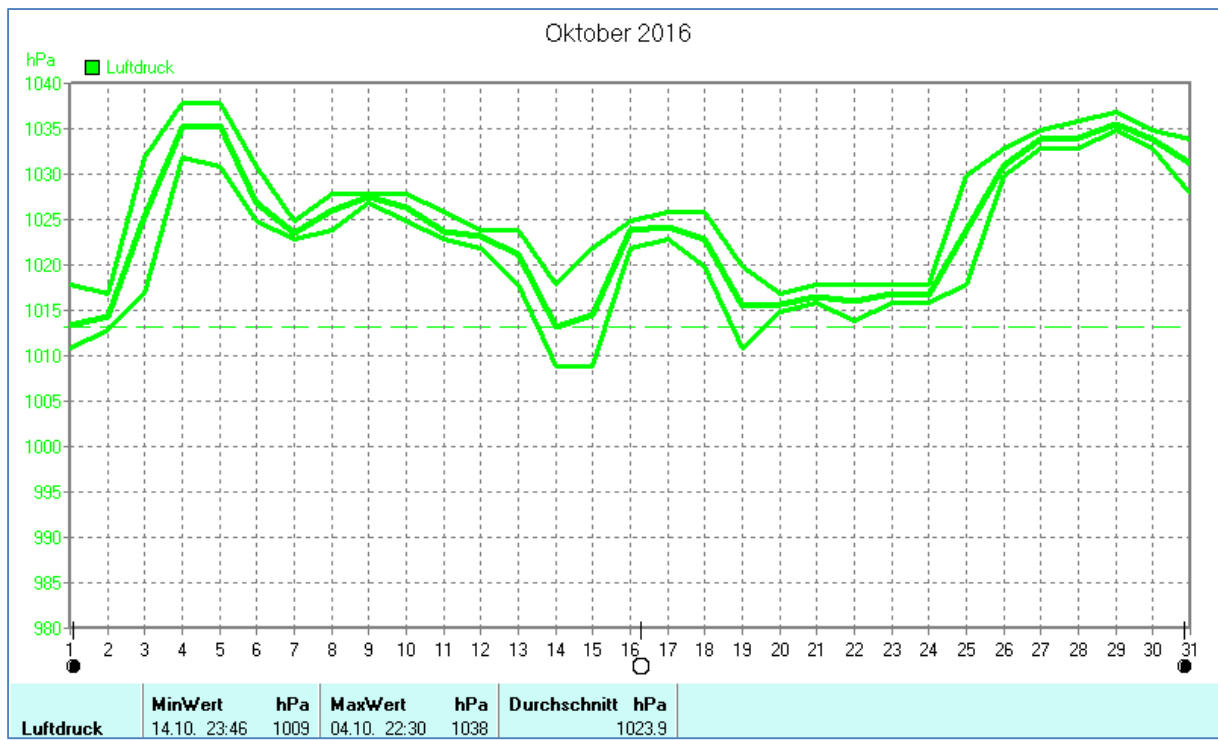


Wettertabelle und Grafiken Oktober 2016 Station Dahl

Wetterdaten Oktober 2016 Station Dahl							
Meßgröße	Minimum	Zeit	Datum	Maximum	Zeit	Datum	Durchschnitt
Temperatur	2,3 °C	06:33	11.10.2016	16,3 °C	14:09	17.10.2016	8,6 °C
Bodentemp.	1,2 °C	06:03	11.10.2016	18,5 °C	14:38	16.10.2016	8,7 °C
Luftfeuchte	64 %	17:10	04.10.2016	82 %	01:11	03.10.2016	77 %
Luftdruck	1009 hPa	23:46	14.10.2016	1038 hPa	22:30	04.10.2016	1024 hPa
Wind km/h				38,3 km/h	04:09	19.10.2016	4,7 km/h
Wind °				N	04:09	19.10.2016	N
Regen l/m ²				28,8 l/m ²	16:09	19.10.2016	#86,760 l/m ²
Sonne h				6:40 h	18:08	16.10.2016	#57:30 h

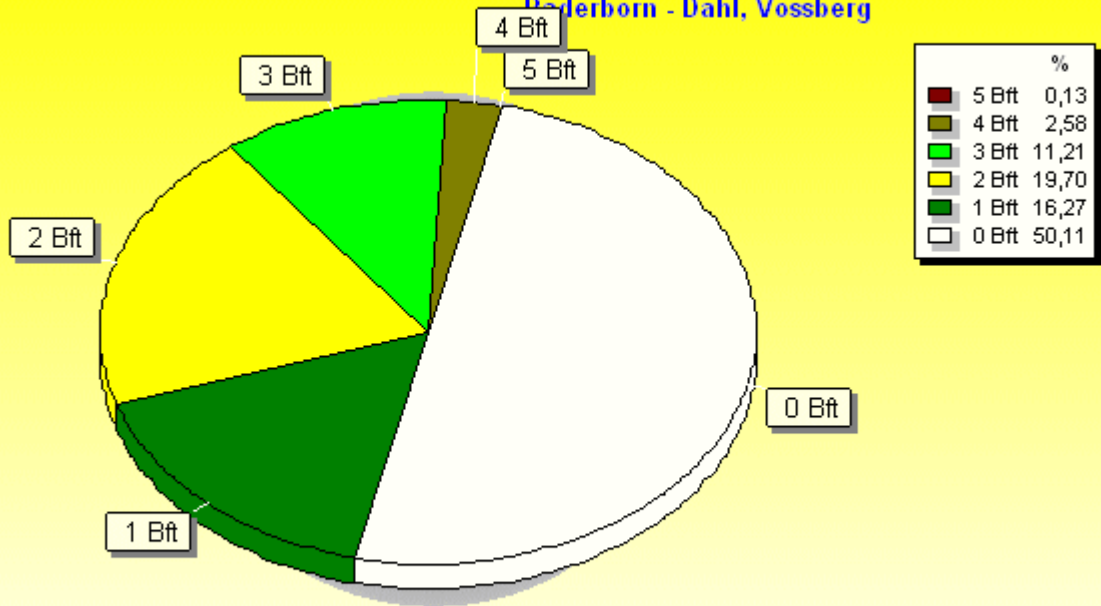






Verteilung Windstärke Oktober 2016

Paderborn - Dahl, Vossberg

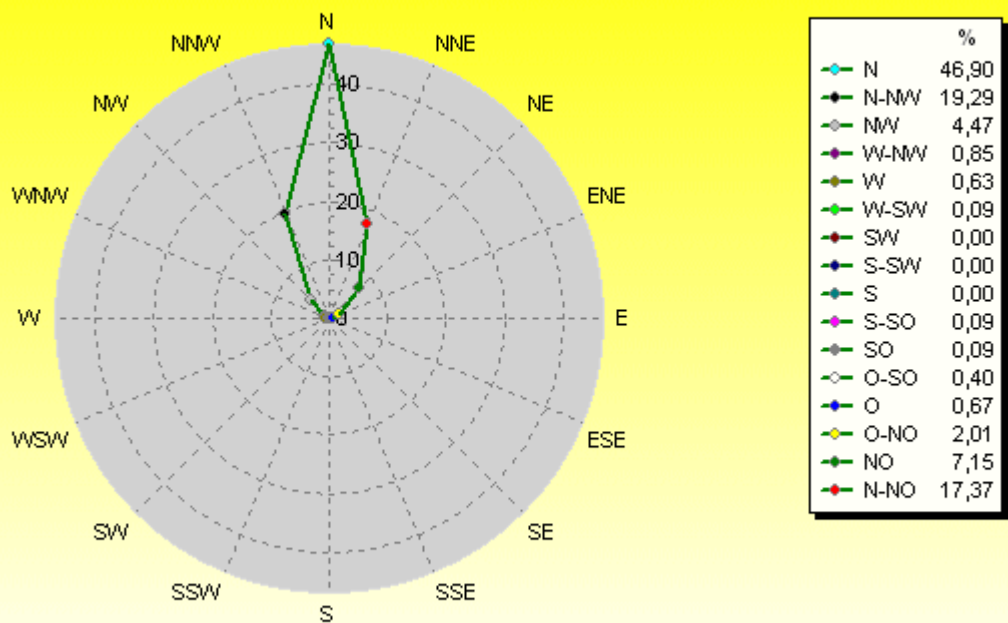


4488 Werte - Ø 4,7km/h - Max. 38,3km/h

© WzWin32

Verteilung Windrichtung Oktober 2016

Paderborn - Dahl, Vossberg



2239 / 2249 Werte -> 50.1% Windstille - Ø 4,7km/h - Max. 38,3km/h

© WzWin32

