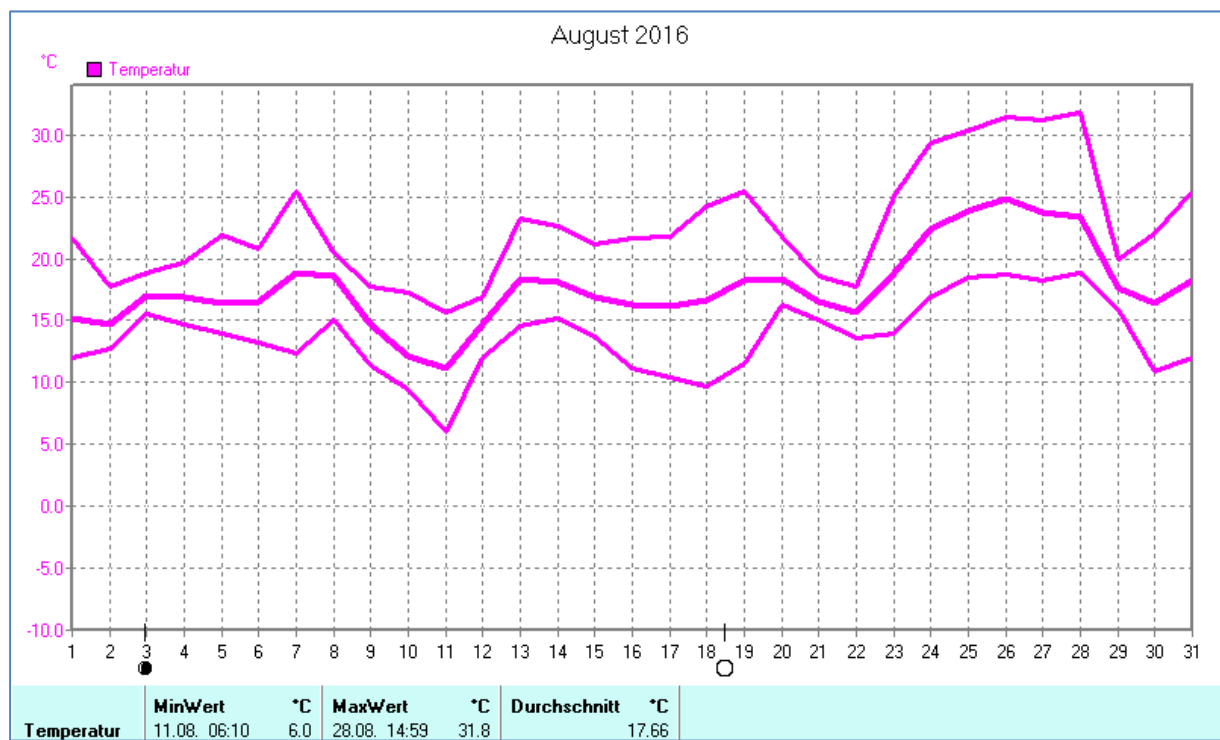
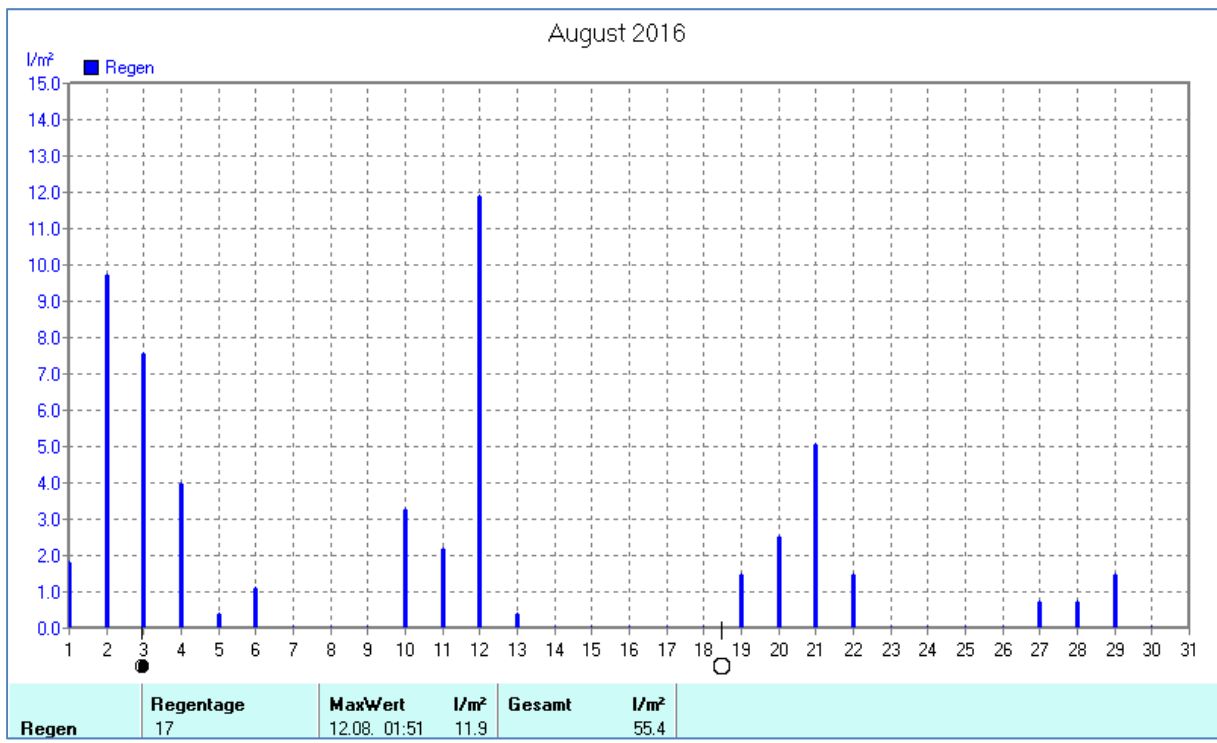
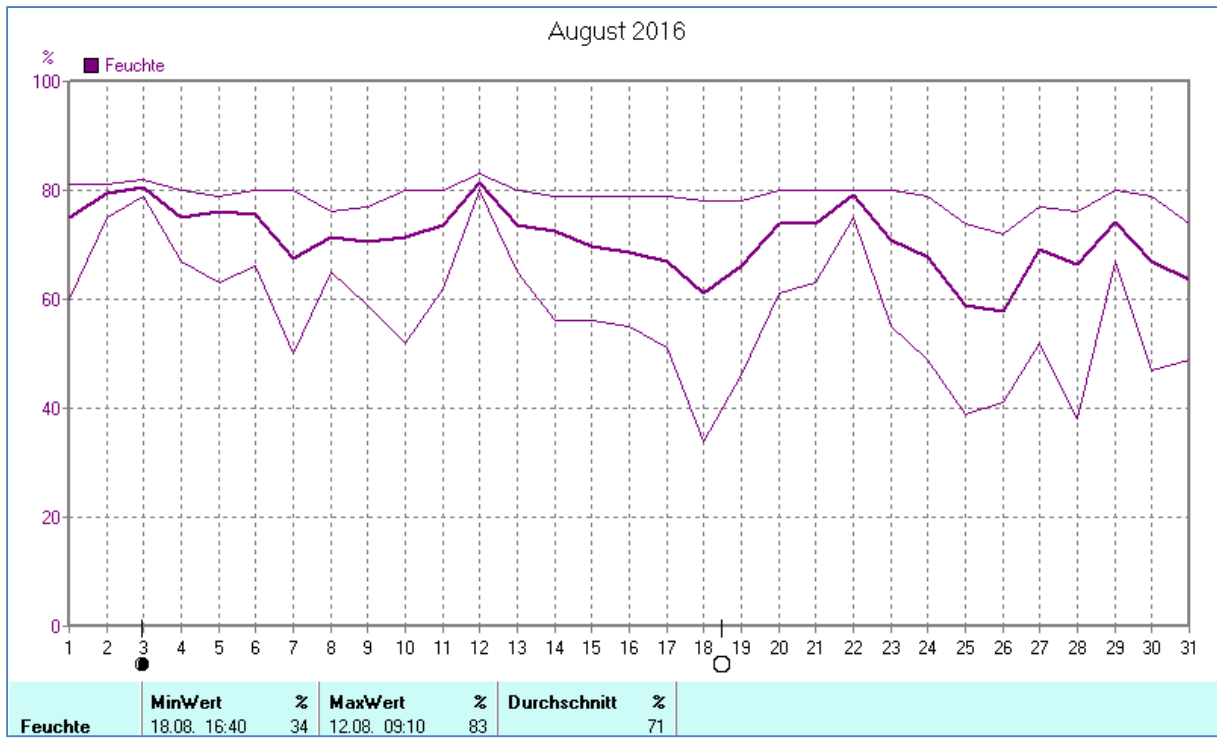
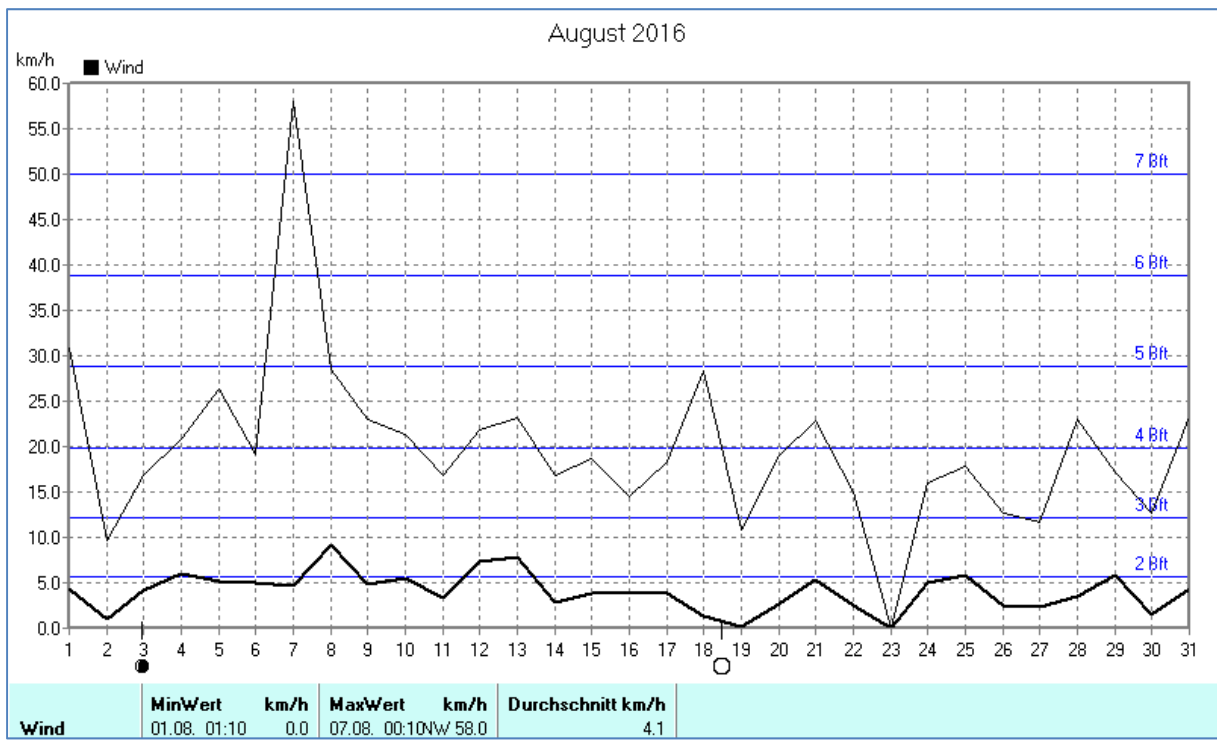
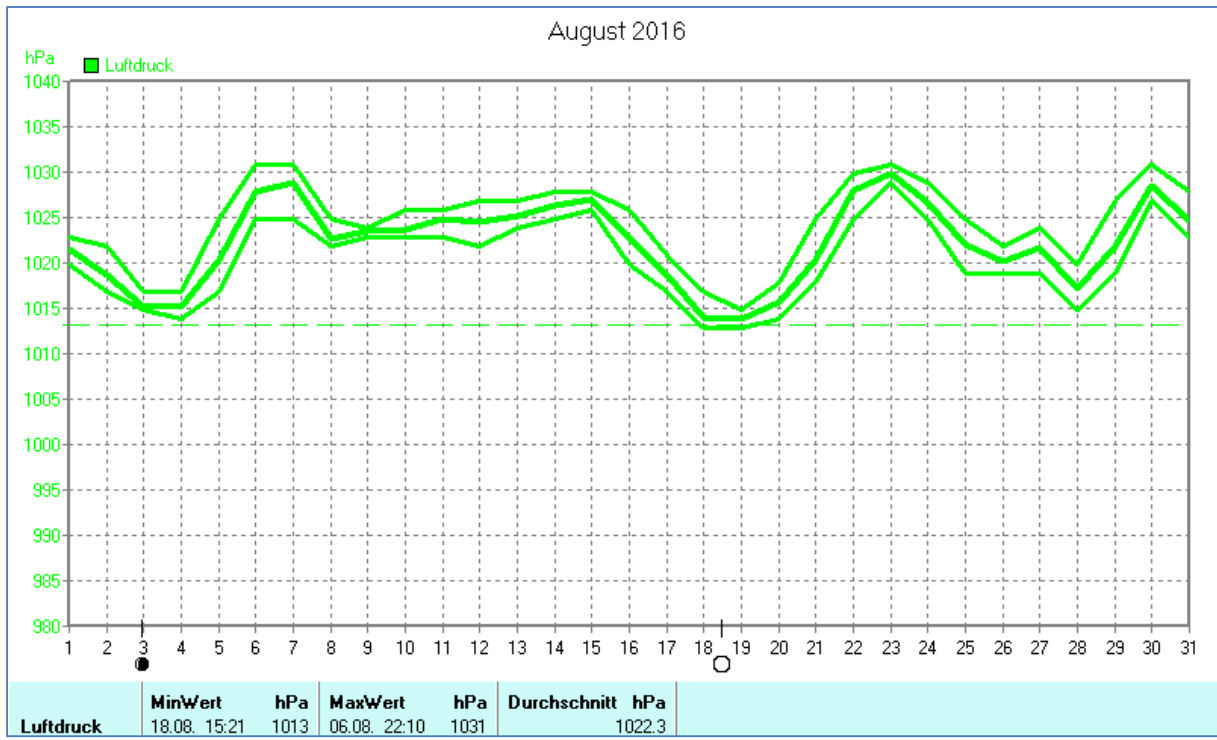


Wettertabelle und Grafiken August 2016 Station Dahl

<u>Wetterdaten August 2016 Station Dahl</u>							
Meßgröße	Minimum	Zeit	Datum	Maximum	Zeit	Datum	Durchschnitt
Temperatur	6,0 °C	06:10	11.08.2016	31,8 °C	14:59	28.08.2016	17,7 °C
Bodentemp.	5,4 °C	05:20	11.08.2016	35,5 °C	14:49	28.08.2016	18,0 °C
Luftfeuchte	34 %	16:40	18.08.2016	83 %	09:10	12.08.2016	71 %
Luftdruck	1013 hPa	15:21	18.08.2016	1031 hPa	22:10	06.08.2016	1022 hPa
Wind km/h				58,0 km/h	00:10	07.08.2016	4,1 km/h
Wind °				N-NW	00:10	07.08.2016	N
Regen l/m ²				11,9 l/m ²	01:51	12.08.2016	#55,440 l/m ²
Sonne h				14:10 h	20:41	07.08.2016	#256:28 h

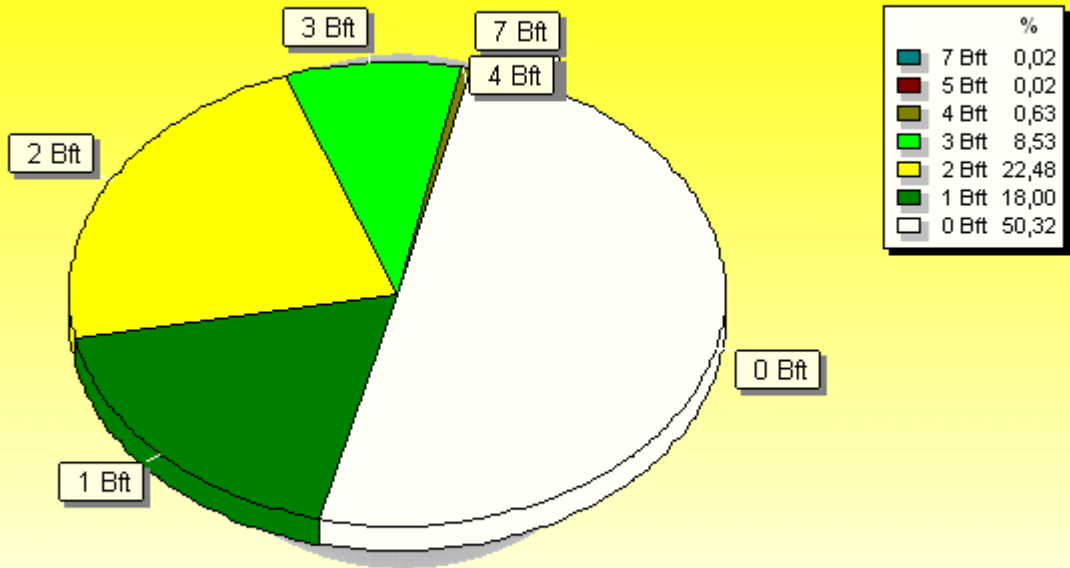






Verteilung Windstärke August 2016

Paderborn - Dahl, Vossberg

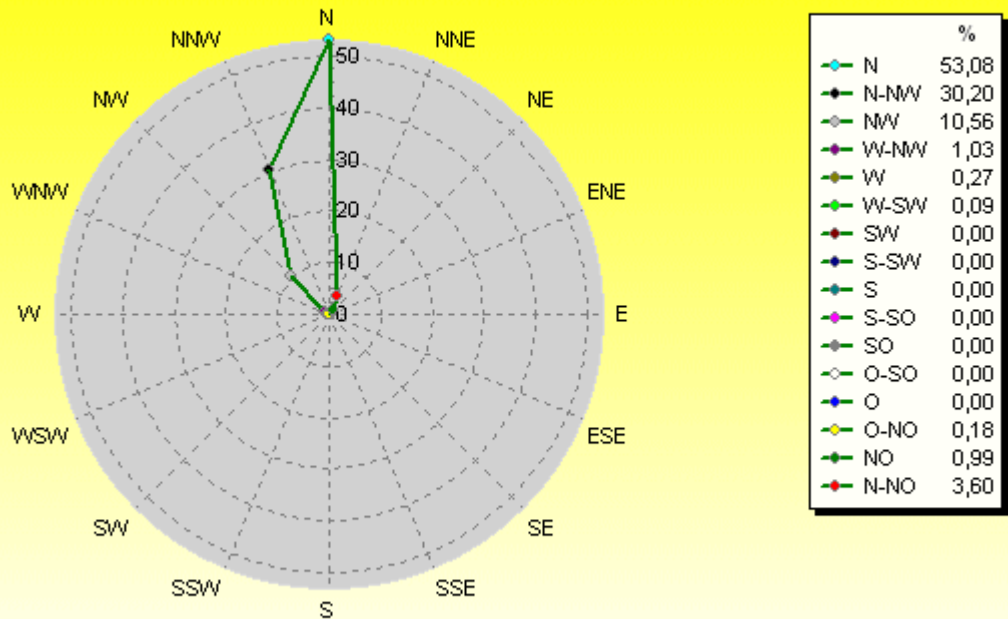


4479 Werte - Ø 4,1km/h - Max. 58,0km/h

© WzWin32

Verteilung Windrichtung August 2016

Paderborn - Dahl, Vossberg



2225 / 2254 Werte -> 50.3% Windstille - Ø 4,1km/h - Max. 58,0km/h

© WzWin32

