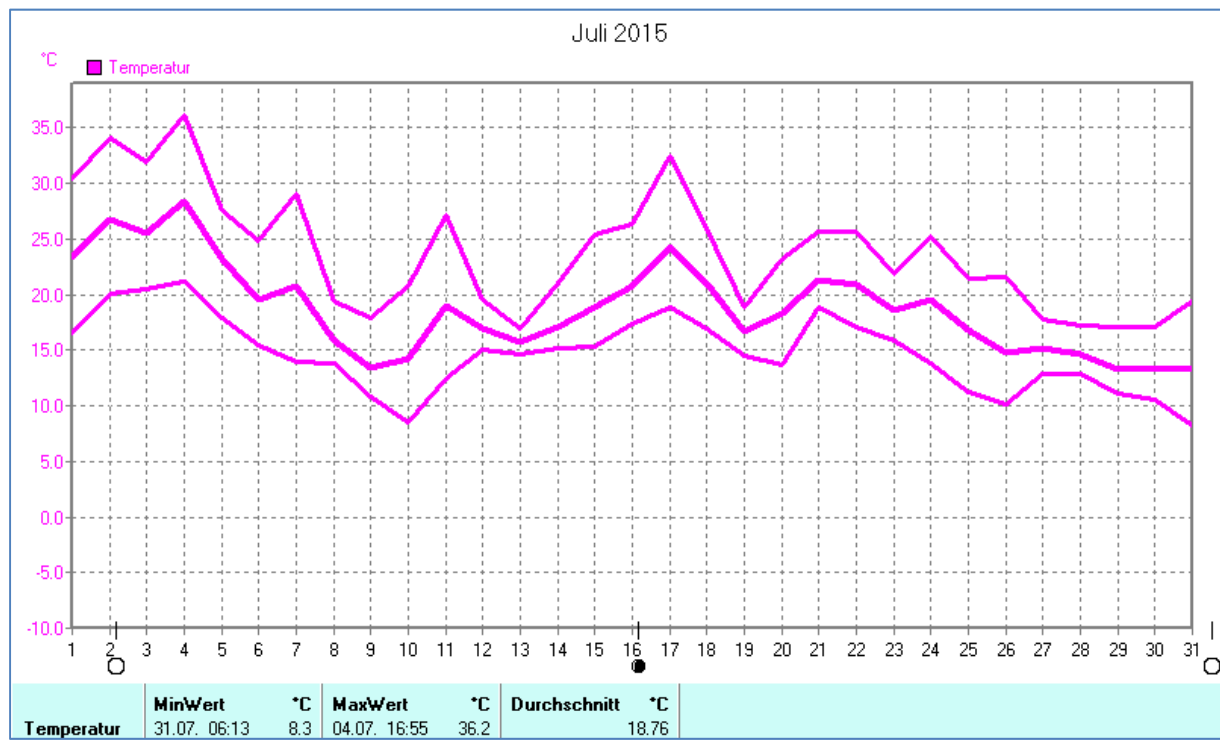
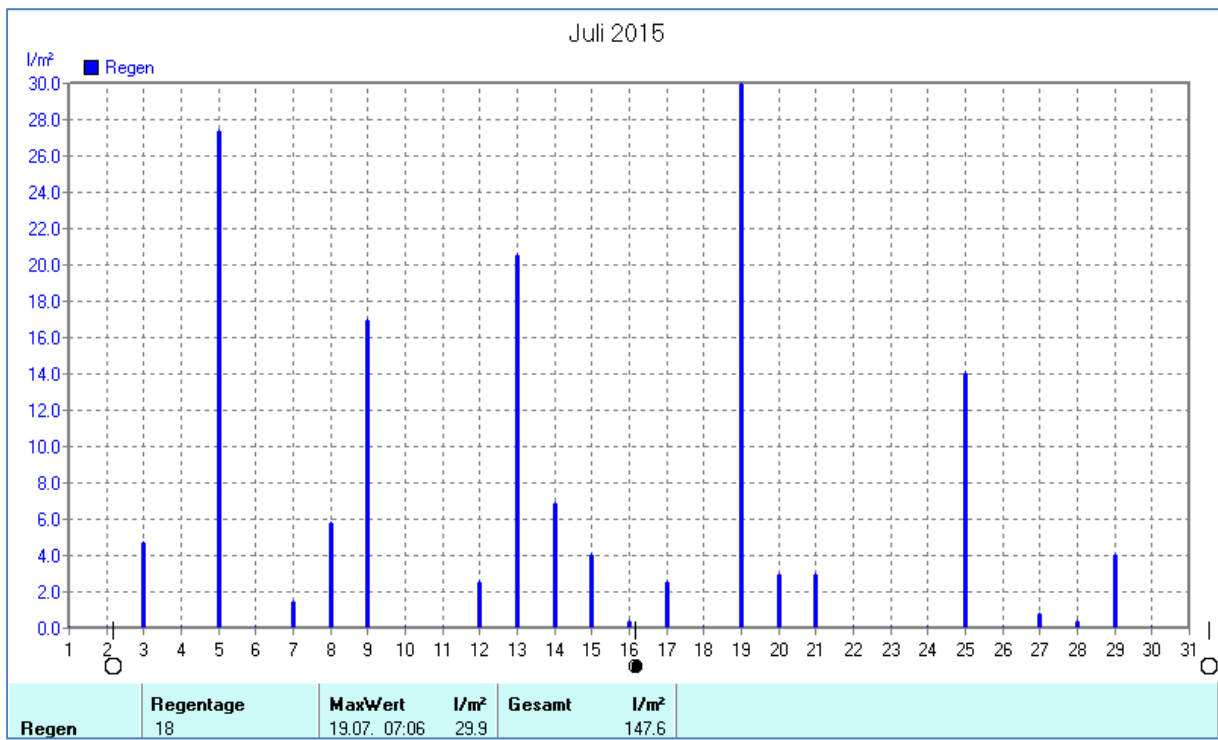
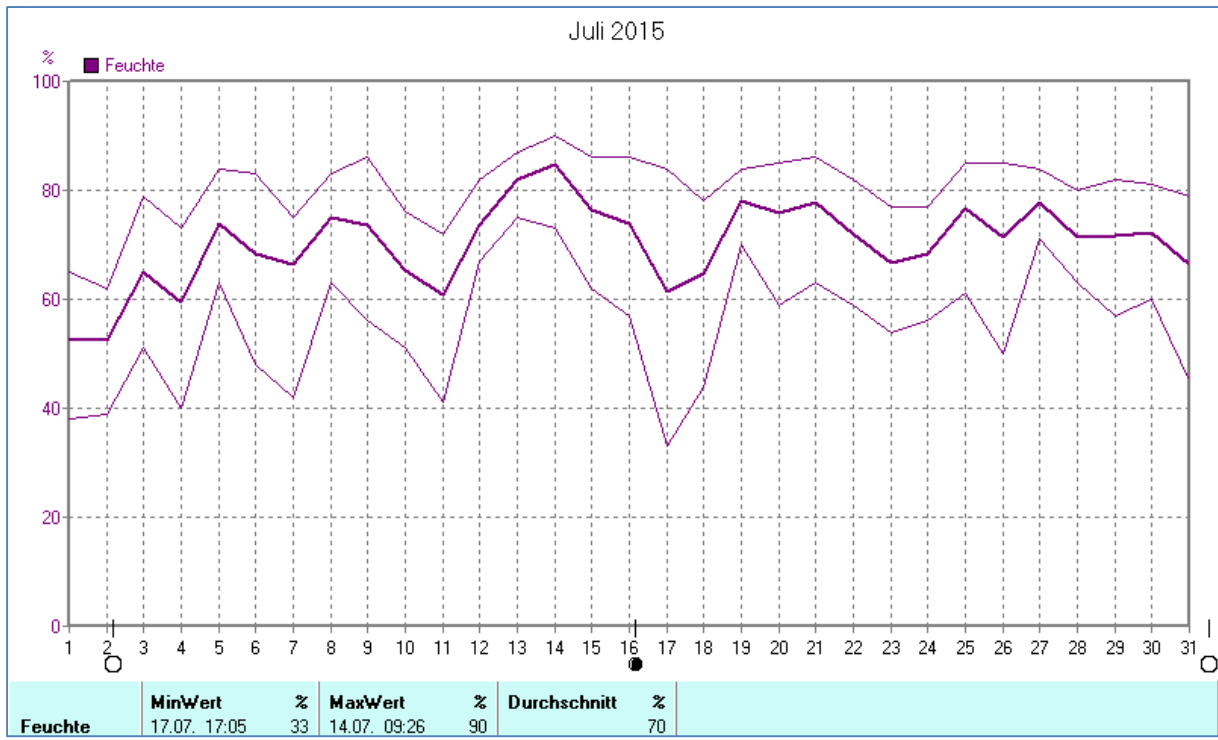
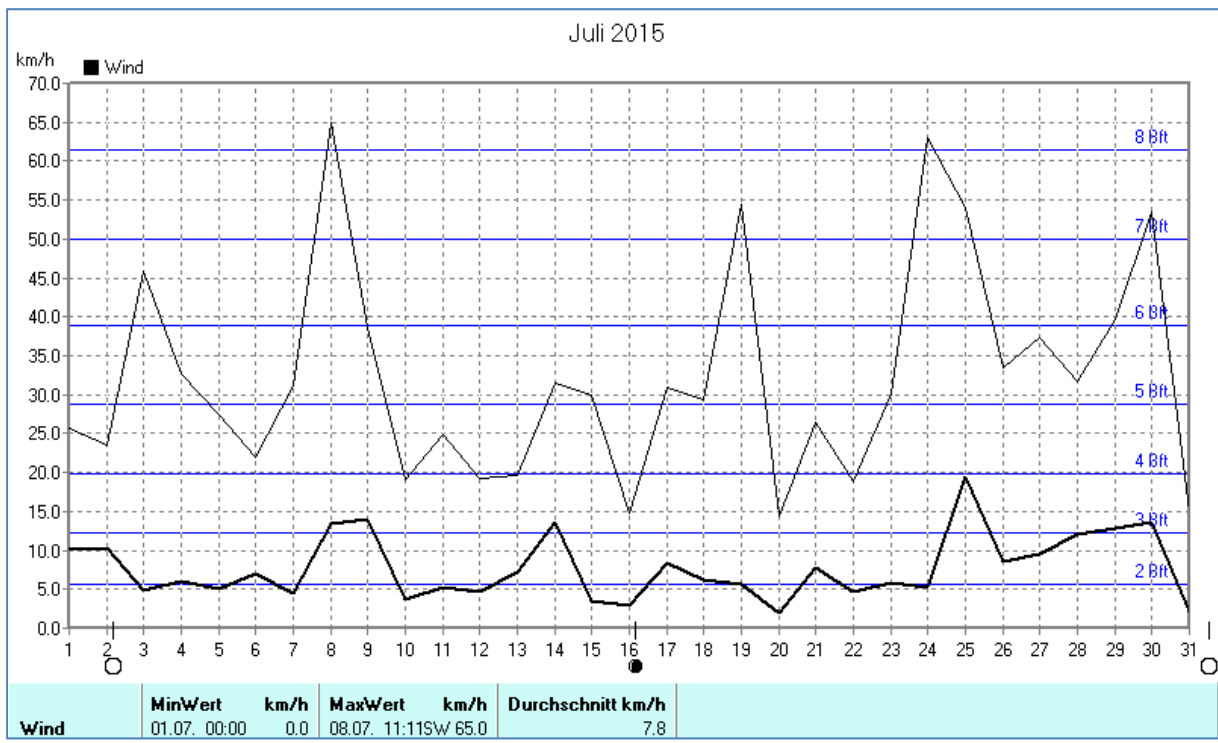
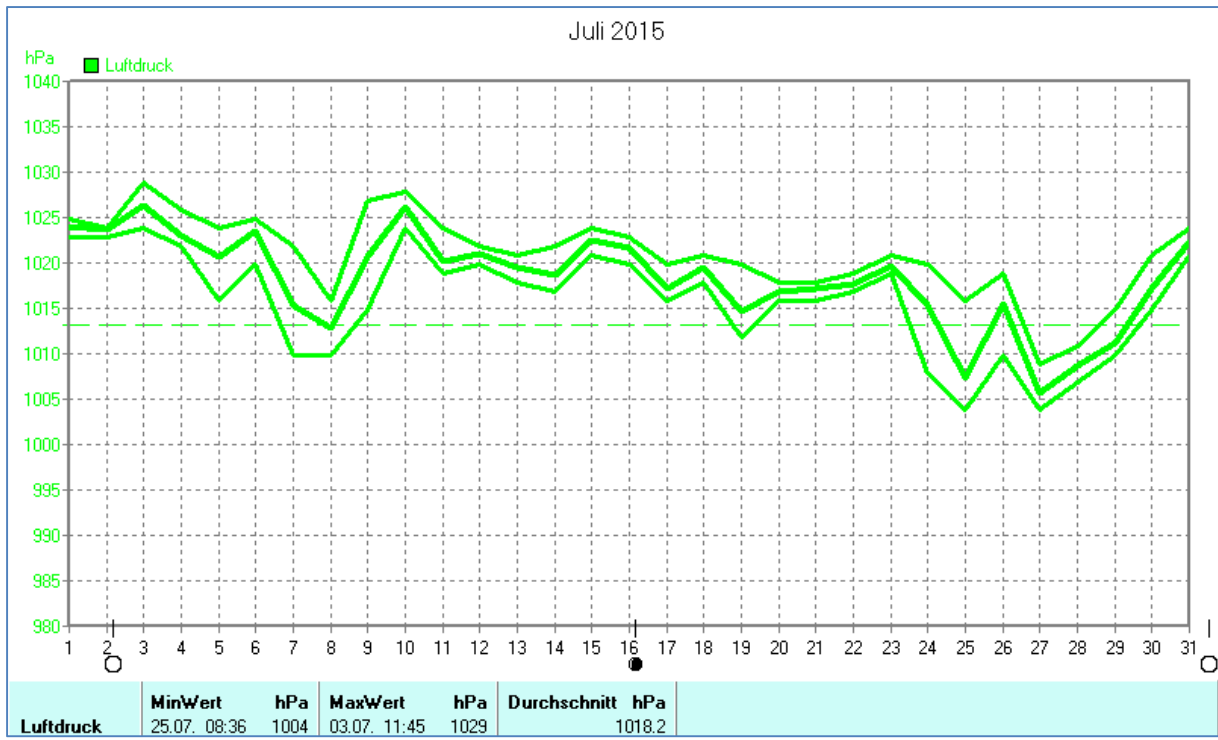


## Wettertabelle und Grafiken Juli 2015 Station Dahl

<u>Wetterdaten Juli 2015 Station Dahl</u>							
Meßgröße	Minimum	Zeit	Datum	Maximum	Zeit	Datum	Durchschnitt
Temperatur	8,3 °C	06:13	31.07.2015	36,2 °C	16:55	04.07.2015	18,8 °C
Bodentemp.	7,6 °C	05:13	31.07.2015	48,8 °C	17:56	02.07.2015	19,7 °C
Luftfeuchte	33 %	17:05	17.07.2015	90 %	09:26	14.07.2015	70 %
Luftdruck	1004 hPa	08:36	25.07.2015	1029 hPa	11:45	03.07.2015	1018 hPa
Wind km/h				65,0 km/h	11:11	08.07.2015	7,8 km/h
Wind °				W-SW	11:11	08.07.2015	W
Regen l/m <sup>2</sup>				29,9 l/m <sup>2</sup>	07:06	19.07.2015	#147,600 l/m <sup>2</sup>
Sonne h				15:45 h	21:30	04.07.2015	#248:37 h

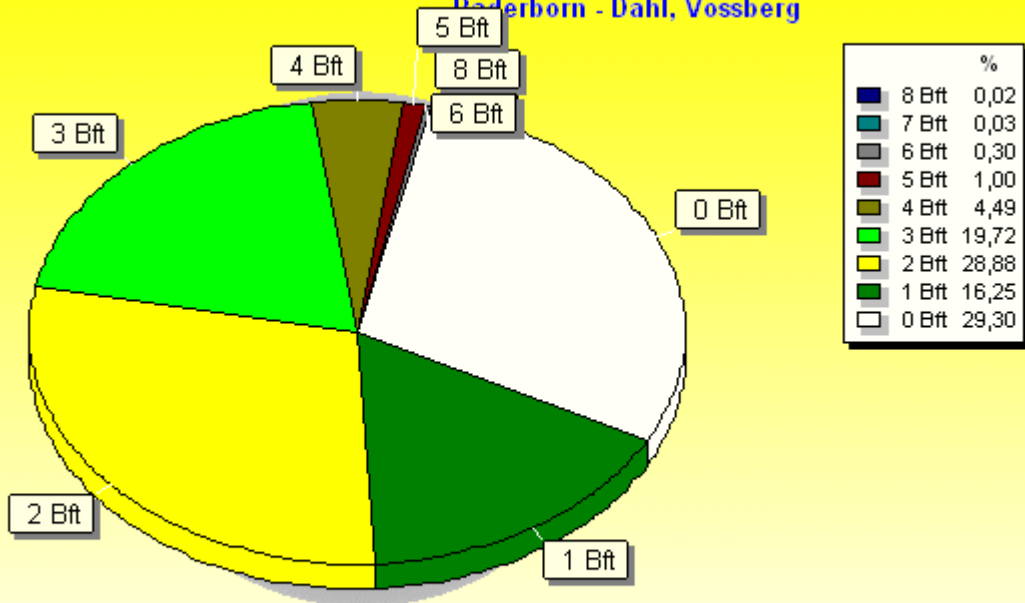






### Verteilung Windstärke Juli 2015

Paderborn - Dahl, Vossberg

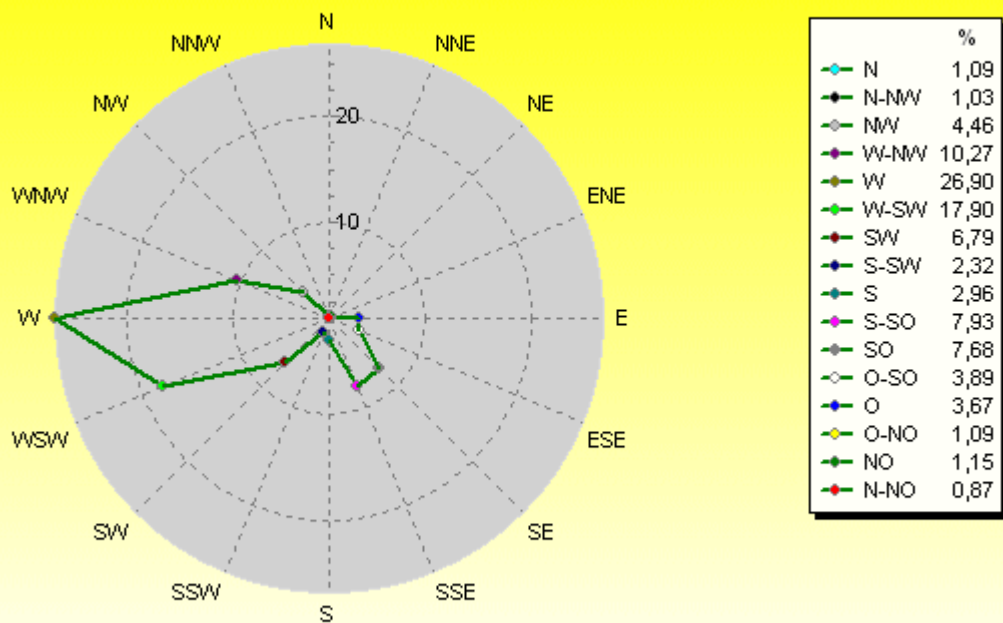


9065 Werte - Ø 7,8km/h - Max. 65,0km/h

© WzWin32

### Verteilung Windrichtung Juli 2015

Paderborn - Dahl, Vossberg



6409 / 2656 Werte -> 29.3% Windstille - Ø 7,8km/h - Max. 65,0km/h

© WzWin32

