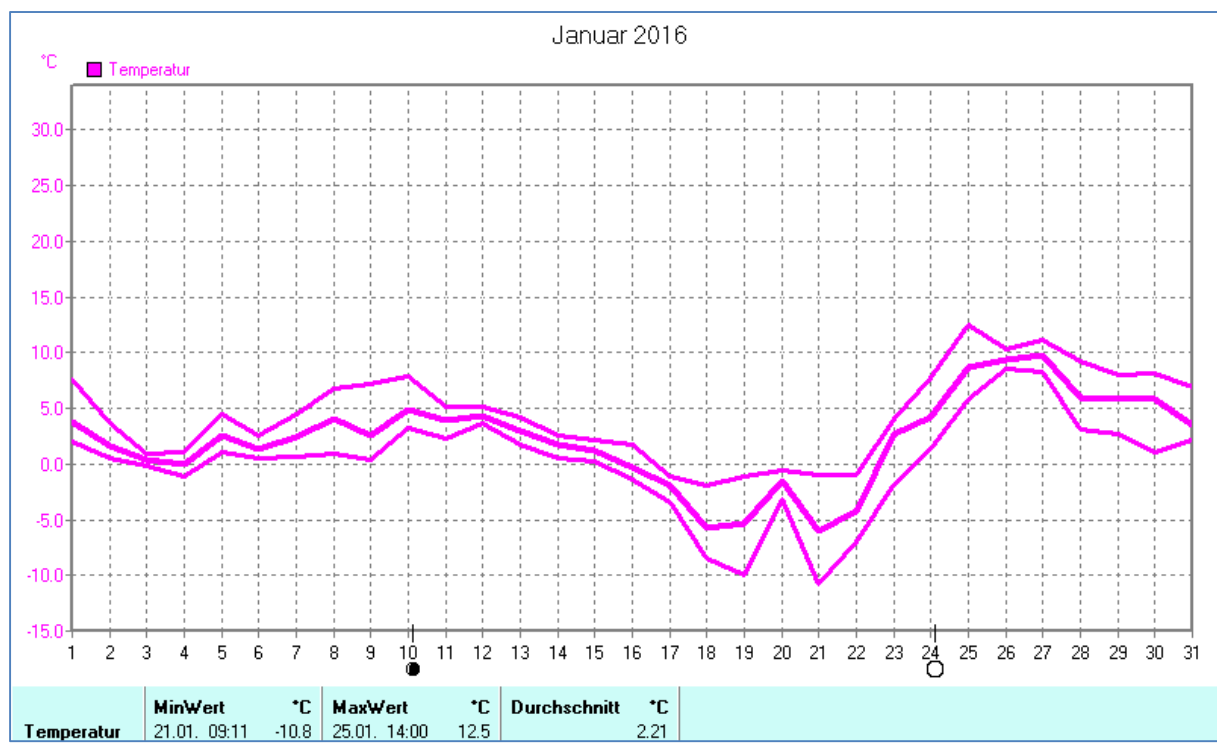
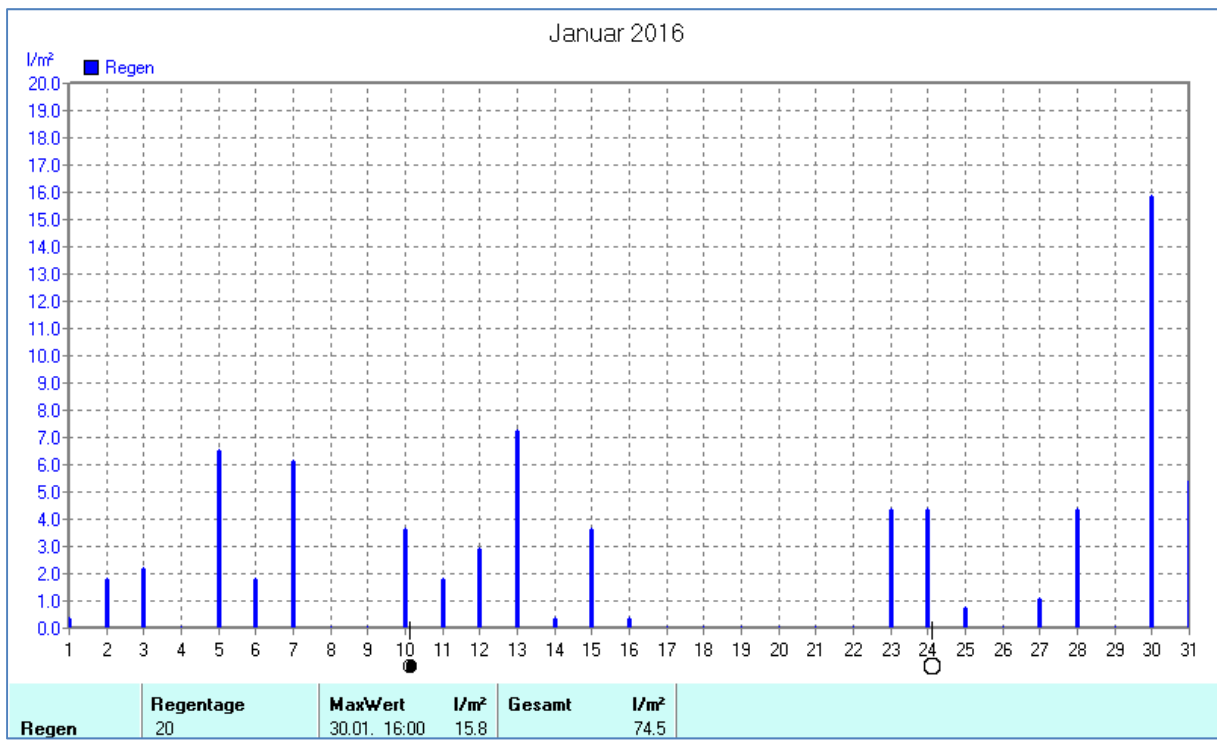
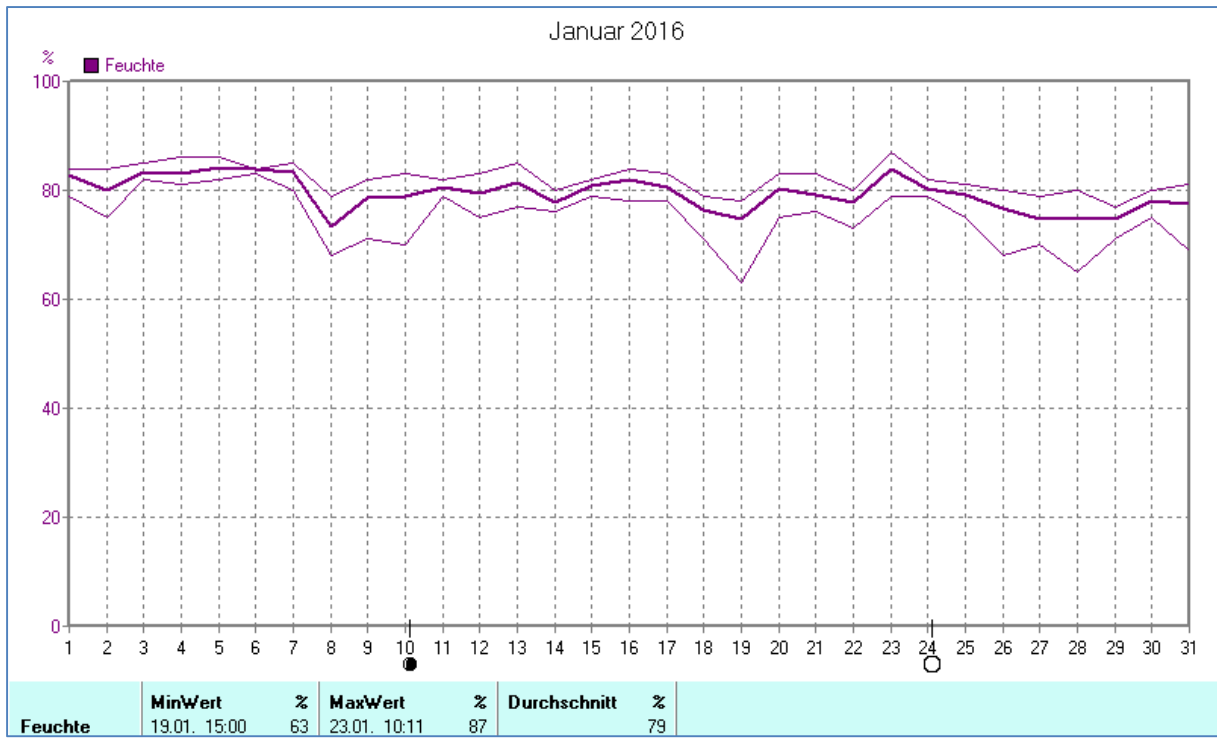
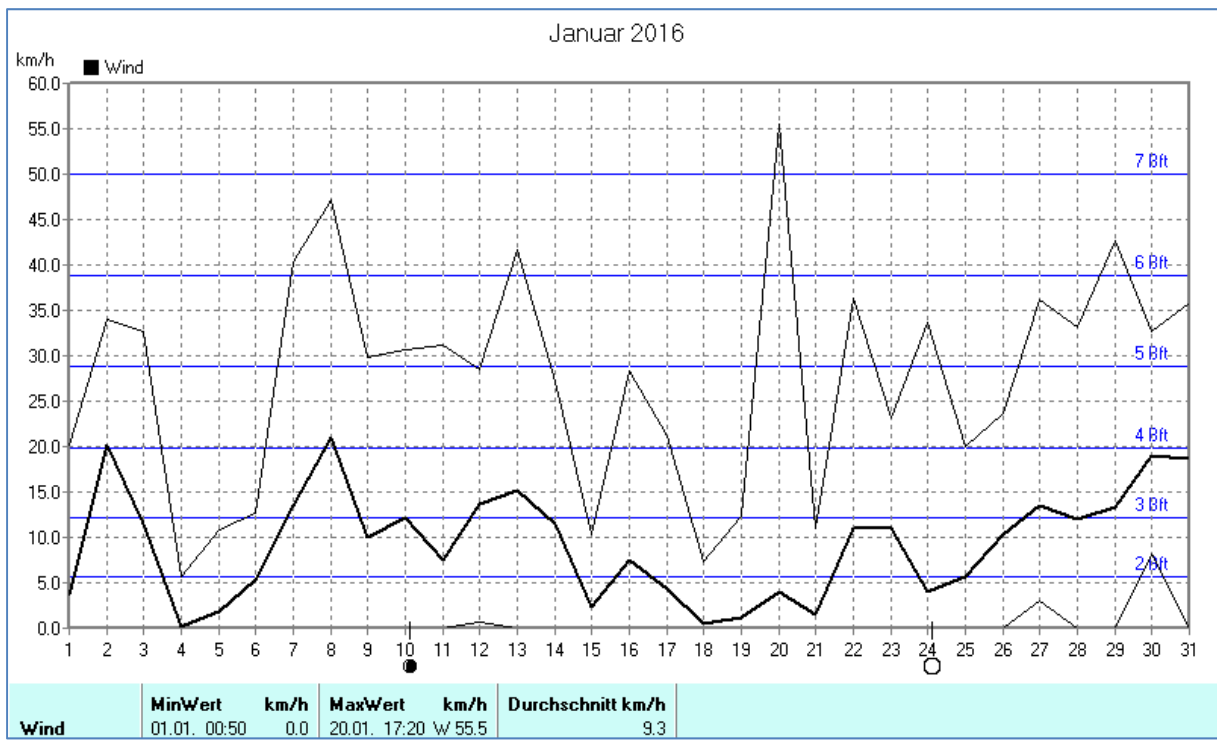
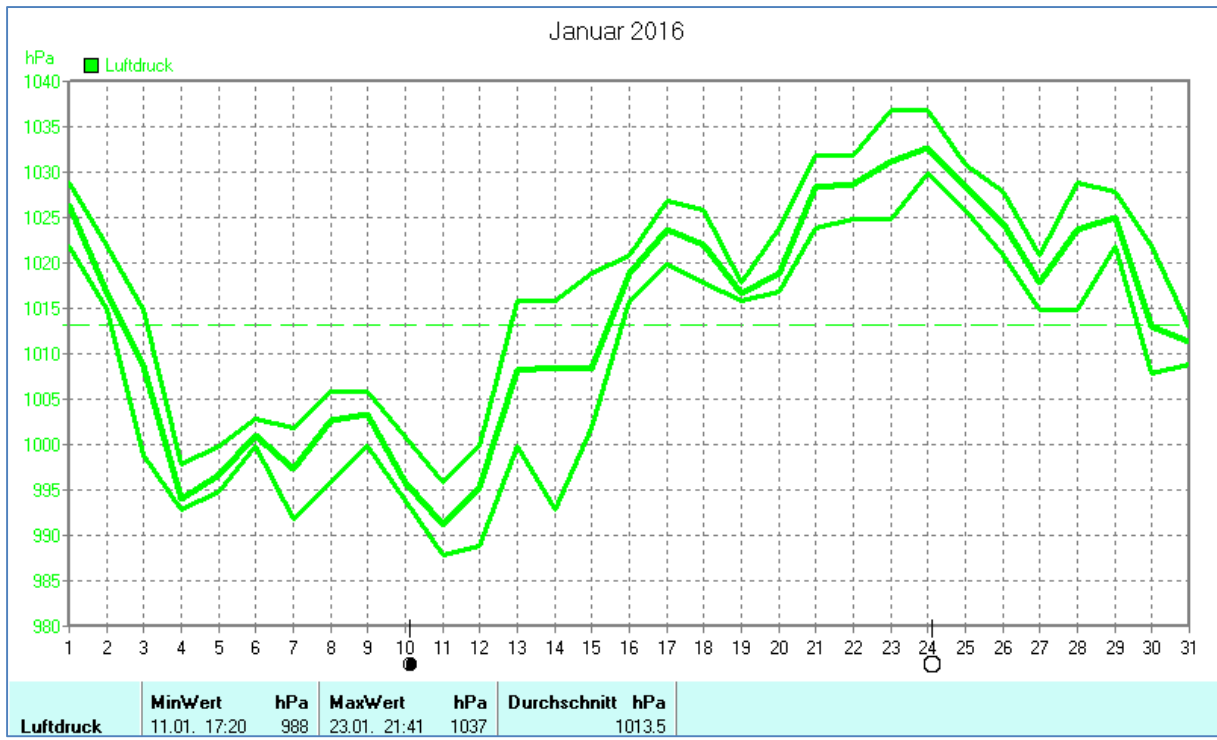


Wettertabelle und Grafiken Januar 2016 Station Dahl

<u>Wetterdaten Januar 2016 Station Dahl</u>							
Meßgröße	Minimum	Zeit	Datum	Maximum	Zeit	Datum	Durchschnitt
Temperatur	-10,8 °C	09:11	21.01.2016	12,5 °C	14:00	25.01.2016	2,2 °C
Bodentemp.	-12,5 °C	09:21	21.01.2016	12,9 °C	13:51	25.01.2016	2,0 °C
Luftfeuchte	63 %	15:00	19.01.2016	87 %	10:11	23.01.2016	79 %
Luftdruck	988 hPa	17:20	11.01.2016	1037 hPa	21:41	23.01.2016	1014 hPa
Wind km/h				55,5 km/h	17:20	20.01.2016	9,3 km/h
Wind °				W	17:20	20.01.2016	W-SW
Regen l/m ²				15,8 l/m ²	16:00	30.01.2016	#74,520 l/m ²
Sonne h				4:41 h	13:51	19.01.2016	#34:58 h

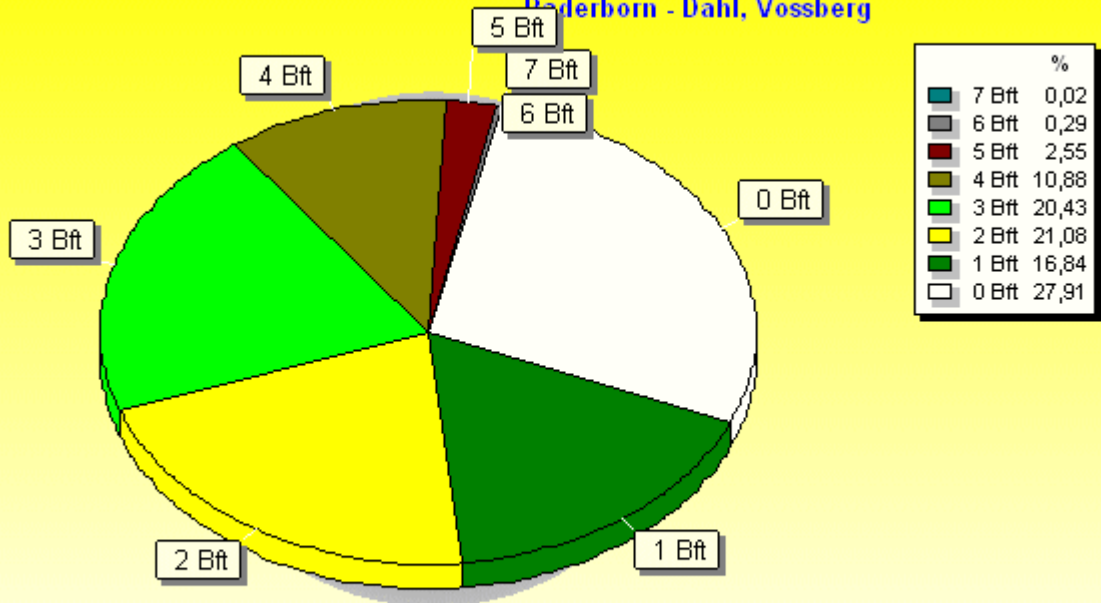






Verteilung Windstärke Januar 2016

Paderborn - Dahl, Vossberg

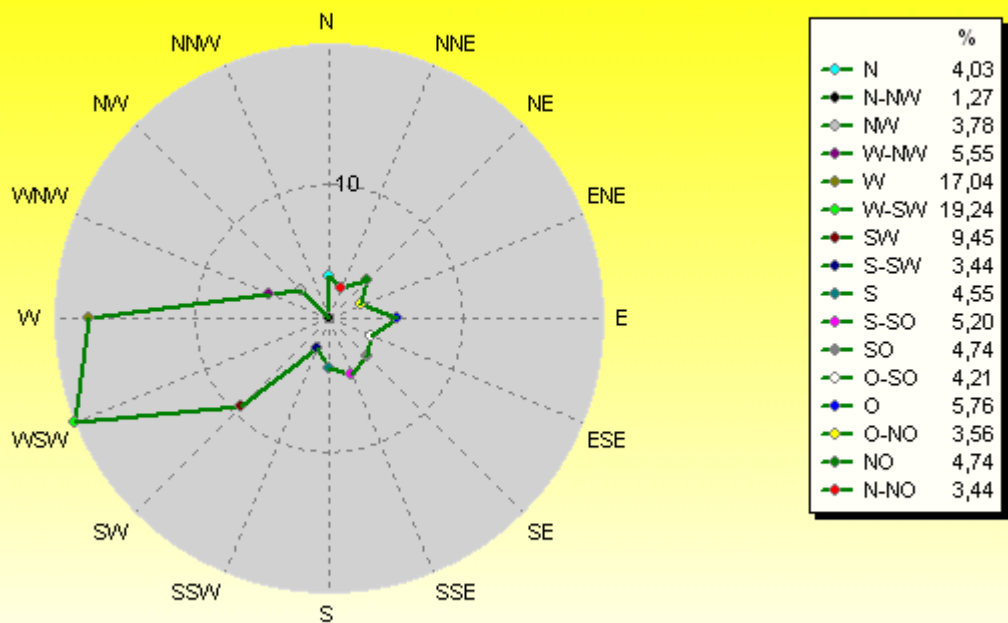


4478 Werte - Ø 9,3km/h - Max. 55,5km/h

© WzWin32

Verteilung Windrichtung Januar 2016

Paderborn - Dahl, Vossberg



3228 / 1250 Werte -> 27.9% Windstille - Ø 9,3km/h - Max. 55,5km/h

© WzWin32

