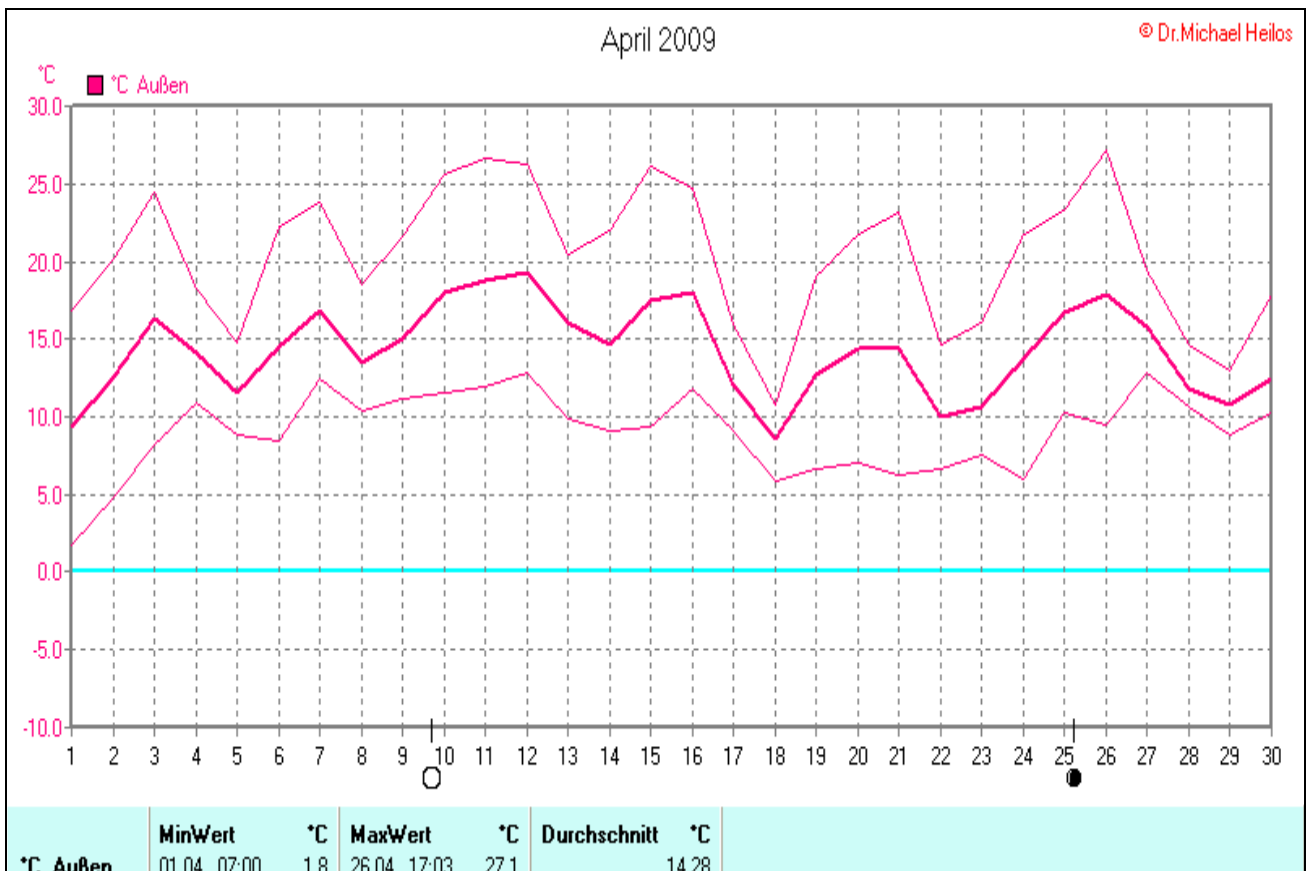
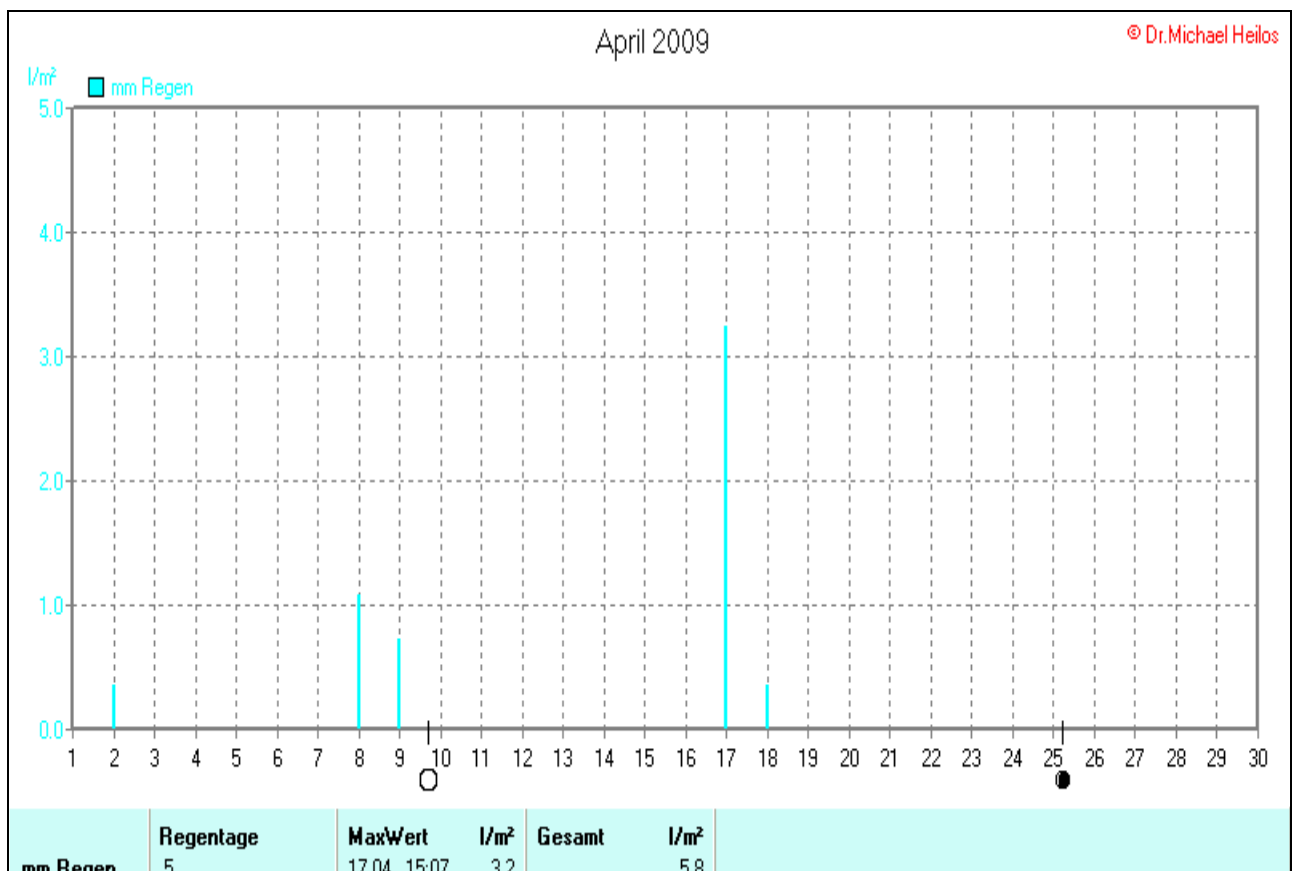
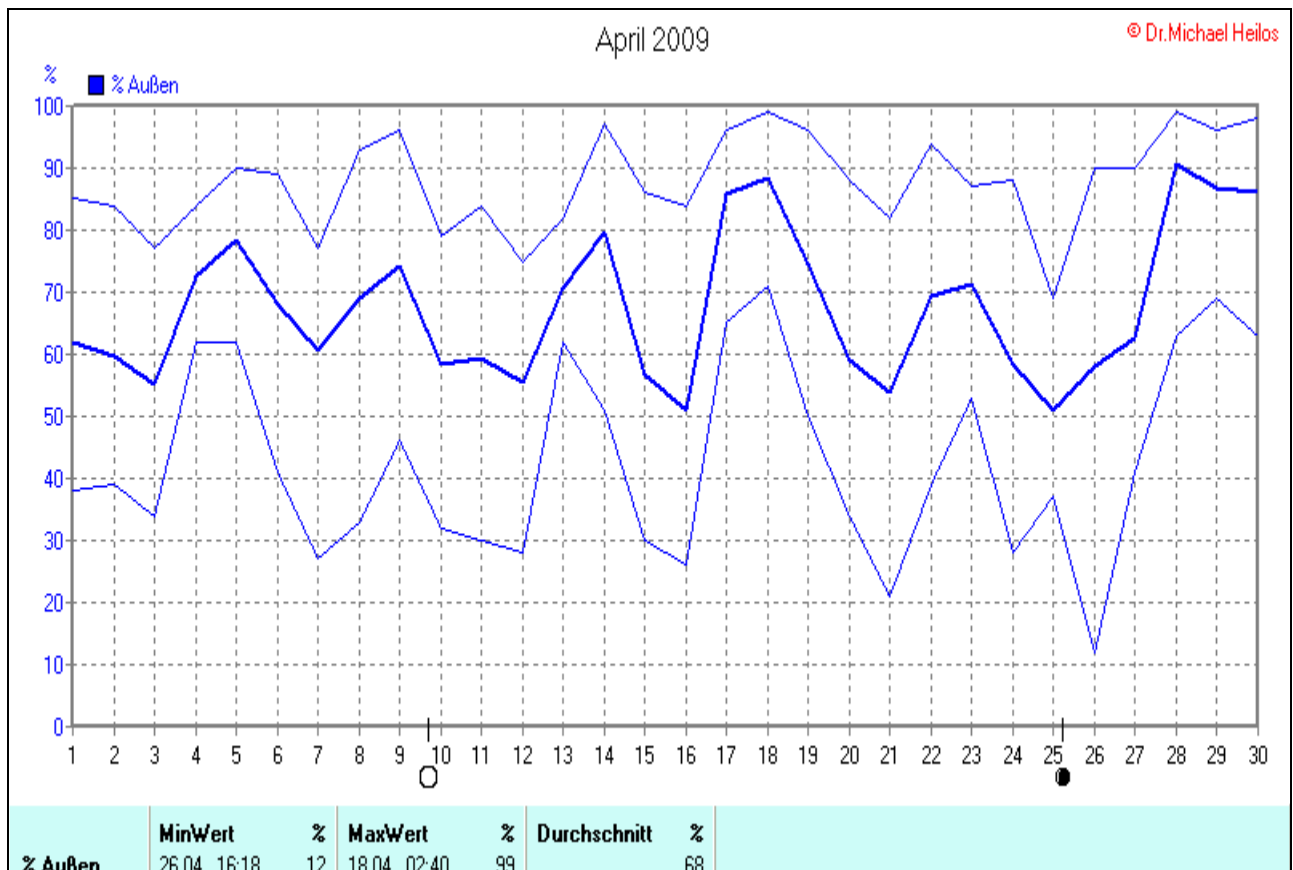


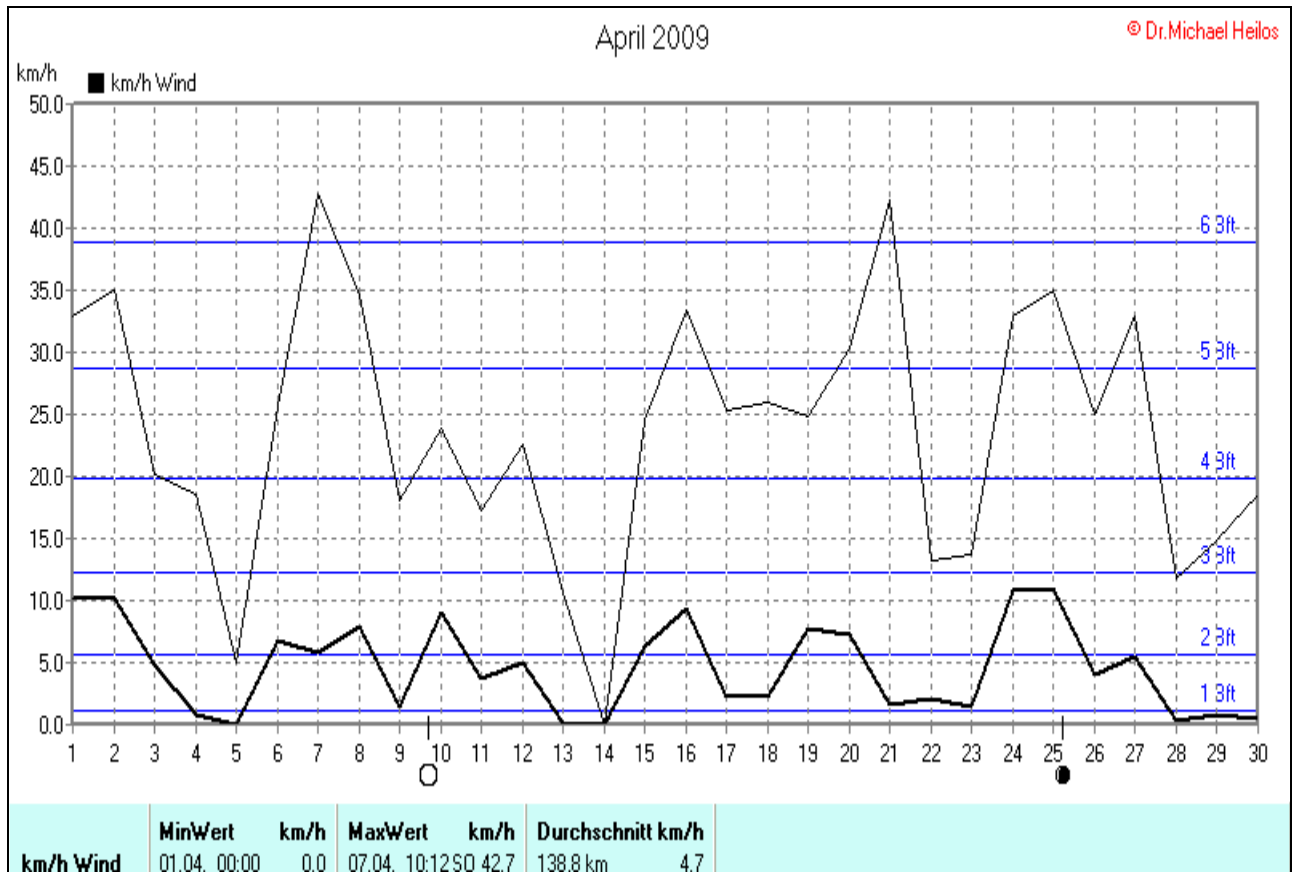
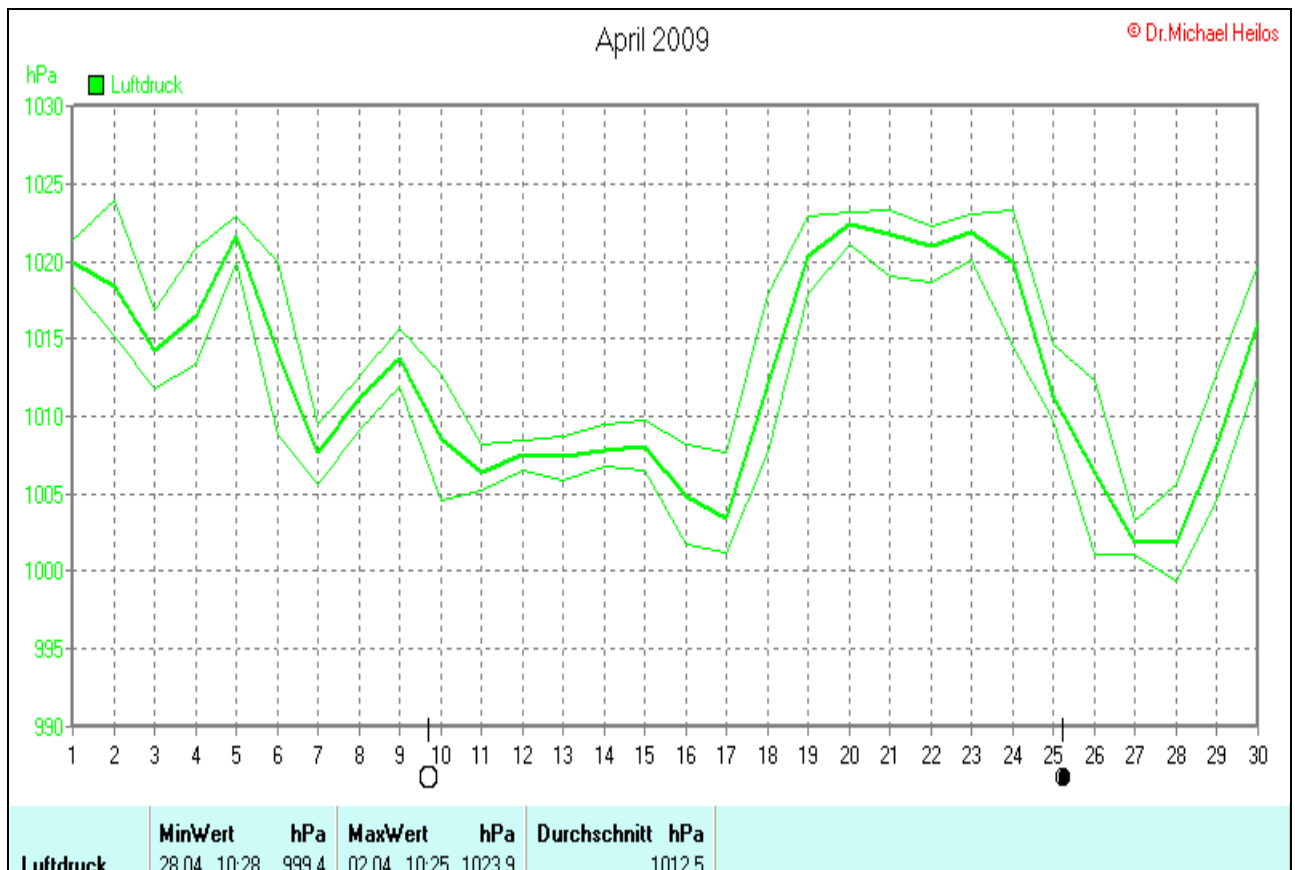
## Wettergrafiken und Tabelle April 2009 Station Borchten

Klimadaten		Wetterstation Borchten	
<b>Standortkoordinaten:</b> geogr. 08°43'35"O - 51°39'58"N			
143 m ü. NN			
<b>Monatswerte: Apr 09</b>			
<b>Temperatur: (Vj.9,3°C)</b>	<b>14,3°C</b>	Tage mit Schneedecke: Eistage(Max<0,0°C): Frosttage(MIN<0,0°C): Sommertage(Max>=25°C): 5 Heiße Tage(Max>=30°C):	
Lj.Mittel:(Lipp.1961-90):	7,9°C		
Abweichung:	6,4 K		
Absoluts Max.:	27,1 °C		
Absolutes Min.:	1,8 °C		
<b>Niederschlag: (Vj.74,5 mm)</b>	<b>5,8 mm?</b>	<b>Luftdruck(Meereshöhe):hPa</b> Absolutes Max.: 1024 Absolutes Min.: 999  Mittel: 1012,5	
Max.Tag:	3,2 mm?		
Lj.Mittel(Lipp. 1961-90):	66,6 mm		
<b>Mittel relative Feuchte:</b>	<b>68 %</b>		
<b>Max. Windböe:</b>	<b>42,7 km/h</b>	Sonne h: 261,2 h Lj.Lipp.(1961-90): 147,6 h	
<b>Mittlere Wind:</b>	<b>4,7 km/h</b>		



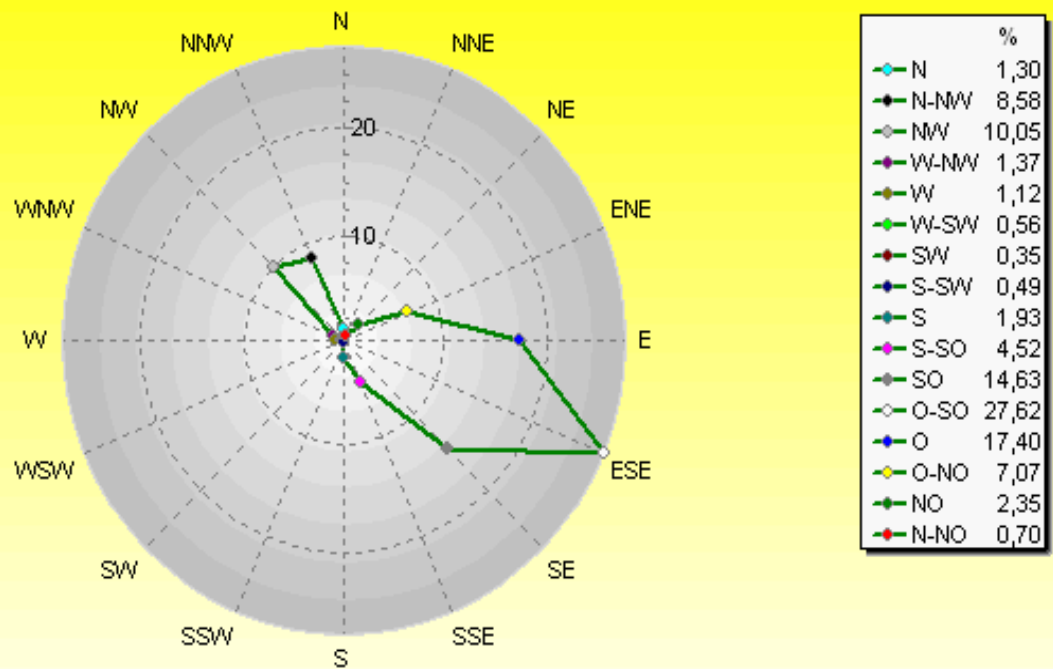


**Regenwerte stimmen nicht, da Regensensor defekt**



## Verteilung Windrichtung April 2009

### Borchen, Kreis Paderborn

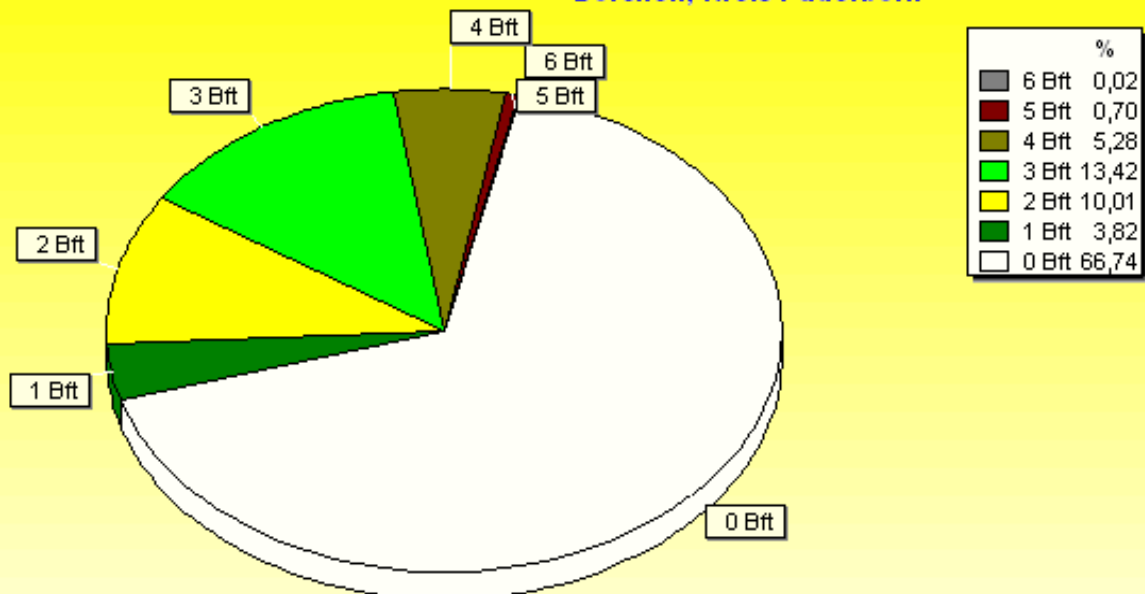


2857 / 5734 Werte -> 66,7% Windstille - Ø 4,7km/h - Max. 42,7km/h - 3330,3 km

© WsWin32 - © Dr.Michael Heilos - Borchen

## Verteilung Windstärke April 2009

### Borchen, Kreis Paderborn



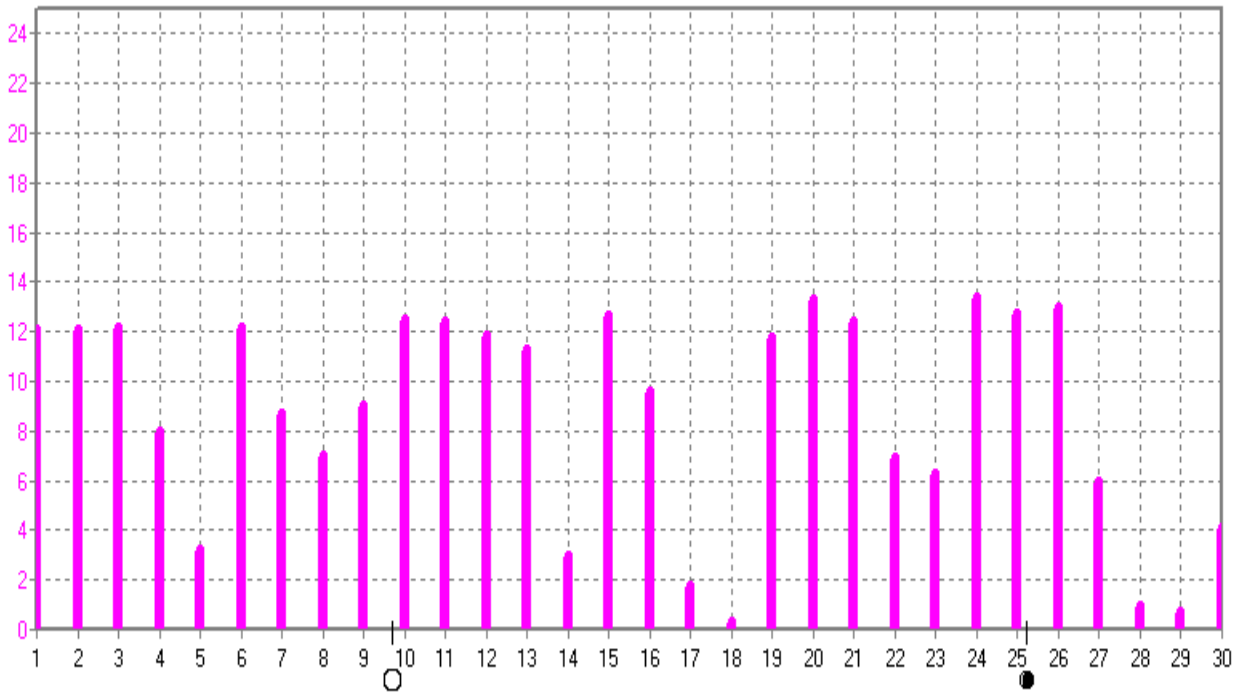
8591 Werte - Ø 4,7km/h - Max. 42,7km/h - 3330,3 km

© WsWin32 - © Dr.Michael Heilos - Borchen

April 2009

© Dr. Michael Heilos

h ■ h Sonnensch.



h Sonnensch.	MaxWert	h	Durchschnitt	h	
	24.04.	20:10	13.40	261:20 h	9